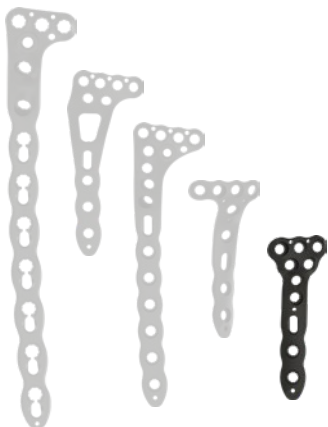


PangeaTM

Proximal Medial Tibia Plates

Design rationale



Pangea Proximal Medial Tibia Plates

Design rationale

stryker

Triangular head shape

Proximal surface allows for a buttressing surface and 7 screw hole options for proximal fixation



Variable-angle screw holes

Circular holes that accommodate screws are universal, accepting non-locking screws and locking screws within a 30° cone

2.0mm K-wire hole

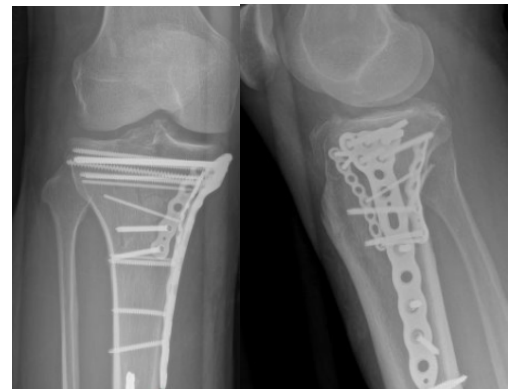
To provide temporary fixation

3.5mm locking screws

Plate placement



- This plate is designed for proximal tibial fractures requiring plate fixation on the medial side
- This plate is designed to be placed straight medial, but allows some anterior and posterior positioning flexibility
- Suggested for use as a single implant for medial fractures, or a supplemental medial fixation in bicondylar fractures



Pangea Proximal Medial Tibia Plates

Design rationale

stryker

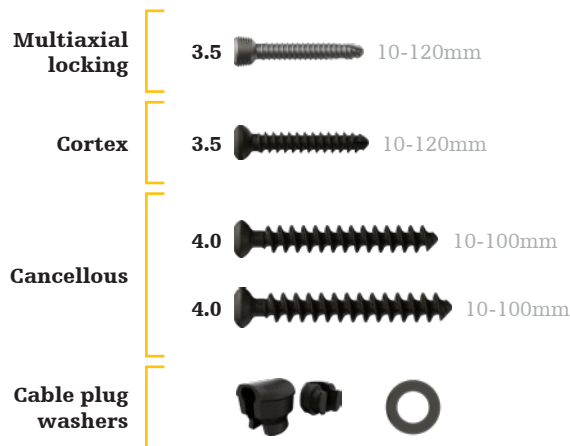
Fit

- Proximal Medial Tibia Plate is designed for partial articular medial plateau fractures and used for adjunctive fixation of medial plateau fragments in bicondylar fractures.
- Designed with the use of SOMA: Stryker Orthopedics Modeling and Analytics.²
- SOMA analysis shows the Proximal Medial Tibia plates fits closer to bone compared to Synthes LCP medial tibial plates.³

Technical specifications

- Standard plate lengths: 4-22 holes (72-324mm)
- Thickness: 3.3mm
- Left and right anatomic plate options
- **Drill bits:**
 - Ø2.5mm x 135mm (542020)
 - Ø2.5mm x 215mm (542021)

Screw platform



References:

1. Pangea Tibia Plating Operative Technique. PGA-ST-4, 03-2023
2. Schmidt W, LiArno S, et al. Stryker Orthopaedic Modeling and Analytics (SOMA): A Review. Surg Technol Int. 2018;32:315-324.
3. Internal Report № D0000262573, Rev AA, Selzach, Switzerland

This document is intended solely for the use of healthcare professionals. A surgeon must always rely on his or her own professional clinical judgment when deciding whether to use a particular product when treating a particular patient. Stryker does not dispense medical advice and recommends that surgeons be trained in the use of any particular product before using it in surgery.

The information presented is intended to demonstrate the breadth of Stryker's product offerings. A surgeon must always refer to the package insert, product label and/ or instructions for use before using any of Stryker's products. Products may not be available in all markets because product availability is subject to the regulatory and/ or medical practices in individual markets. Please contact your sales representative if you have questions about the availability of products in your area. Not intended for promotional or marketing use outside of the United States and Canada.

Stryker Corporation or its affiliates own, use, or have applied for the following trademarks or service marks: Pangea, Stryker. All other trademarks are trademarks of their respective owners or holders.

Content ID: PGA-BL-7_Rev-1_36130

Copyright © 2023 Stryker



Manufacturer:

Stryker GmbH
Bohnackerweg 1
2545 Selzach, Switzerland

[stryker.com](https://www.stryker.com)