

# Pangea<sup>TM</sup>

## Distal Posterior Fibula Plate

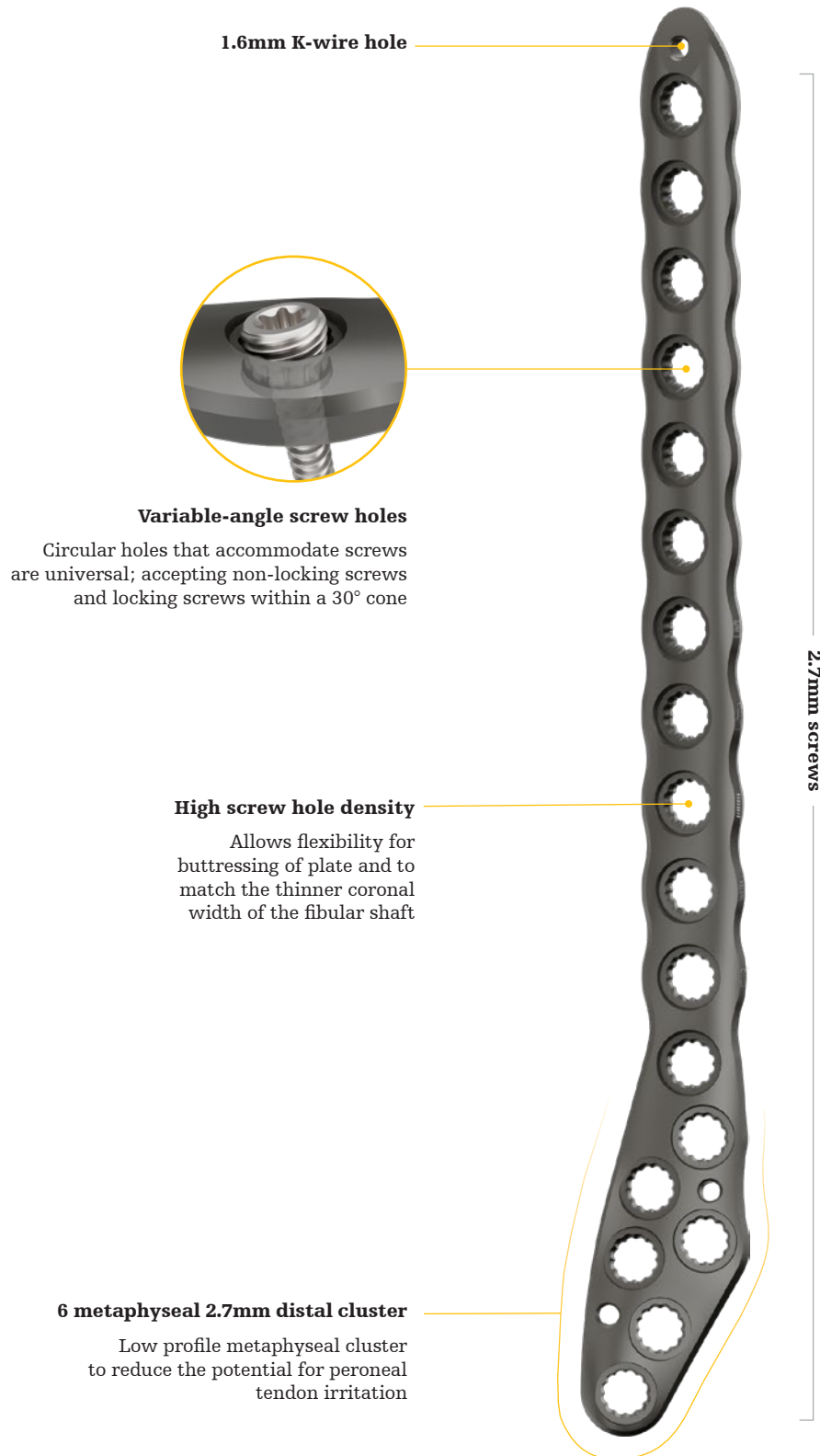
Design rationale



# Pangea Distal Posterior Fibula Plate

## Design rationale

**stryker**

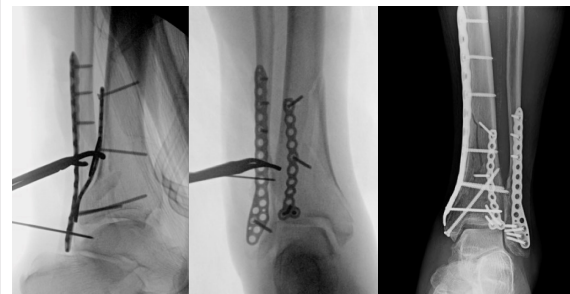


## Plate placement



- The distal portion of this plate should be placed so the 2.7mm cluster is centered over the posterior metaphyseal fibula, just proximal to the peroneal groove (Confirm there is no overhang over the edge of the distal fibula)
- When positioned correctly, the distal aspect of the plate should not contact the peroneal tendons
- The proximal aspect of the plate should be centered on the posterior aspect of the shaft of the fibula

## Pangea Distal Posterior Fibula Plate X-rays



# Pangea Distal Posterior Fibula Plate

## Design rationale

**stryker**

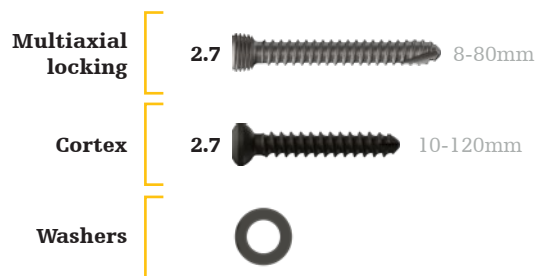
### Fit

- Designed for buttressing of oblique or supination external rotation ankle fractures
- Designed for direct posterior placement on the fibular shaft
- Designed for placement through the posterolateral approach and can be placed through a window medial or lateral to the peroneal tendons
- Distal cluster is tapered to sit immediately lateral and proximal to the peroneal retinaculum
- Pangea Distal Fibula plates were found to sit closer to the bone than competitive VA LCP plates<sup>1</sup>
- Designed with the use of SOMA: Stryker Orthopedics Modeling and Analytics<sup>1</sup>
- The SOMA bone database contains a collection of 5570 and growing clinical CT scans and contains over 34,600 3D bone models<sup>2</sup>
- Uses 2.7mm screws in the plate shaft to match the thinner coronal width of the fibular shaft

### Technical specifications

- Standard plate lengths: 6-26 holes (79-231mm)
- Thickness: 2.0mm distal, 2.3mm shaft
- Left and right anatomic plate options
- **Drill bits:**
  - Ø2.0mm x 135mm (542000(S))
  - Ø2.0mm x 175mm (542001(S))

### Screw platform



### References:

1. Internal report № D0000262573, Rev AA, Selzach, Switzerland
2. Internal report № D0000124129, Rev AC, Schönkirchen, Germany

This document is intended solely for the use of healthcare professionals. A surgeon must always rely on his or her own professional clinical judgment when deciding whether to use a particular product when treating a particular patient. Stryker does not dispense medical advice and recommends that surgeons be trained in the use of any particular product before using it in surgery.

The information presented is intended to demonstrate the breadth of Stryker's product offerings. A surgeon must always refer to the package insert, product label and/or instructions for use before using any of Stryker's products. Products may not be available in all markets because product availability is subject to the regulatory and/or medical practices in individual markets. Please contact your sales representative if you have questions about the availability of products in your area. Not intended for promotional or marketing use outside of the United States and Canada.

Stryker Corporation or its affiliates own, use, or have applied for the following trademarks or service marks: Pangea, Stryker.  
All other trademarks are trademarks of their respective owners or holders.