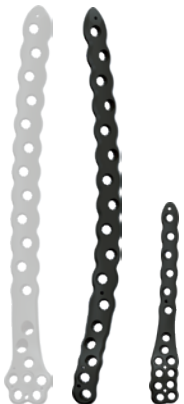


PangeaTM

Distal Medial Femur Plates

Design rationale



Pangea™ Distal Medial Femur Plates

Design rationale

stryker

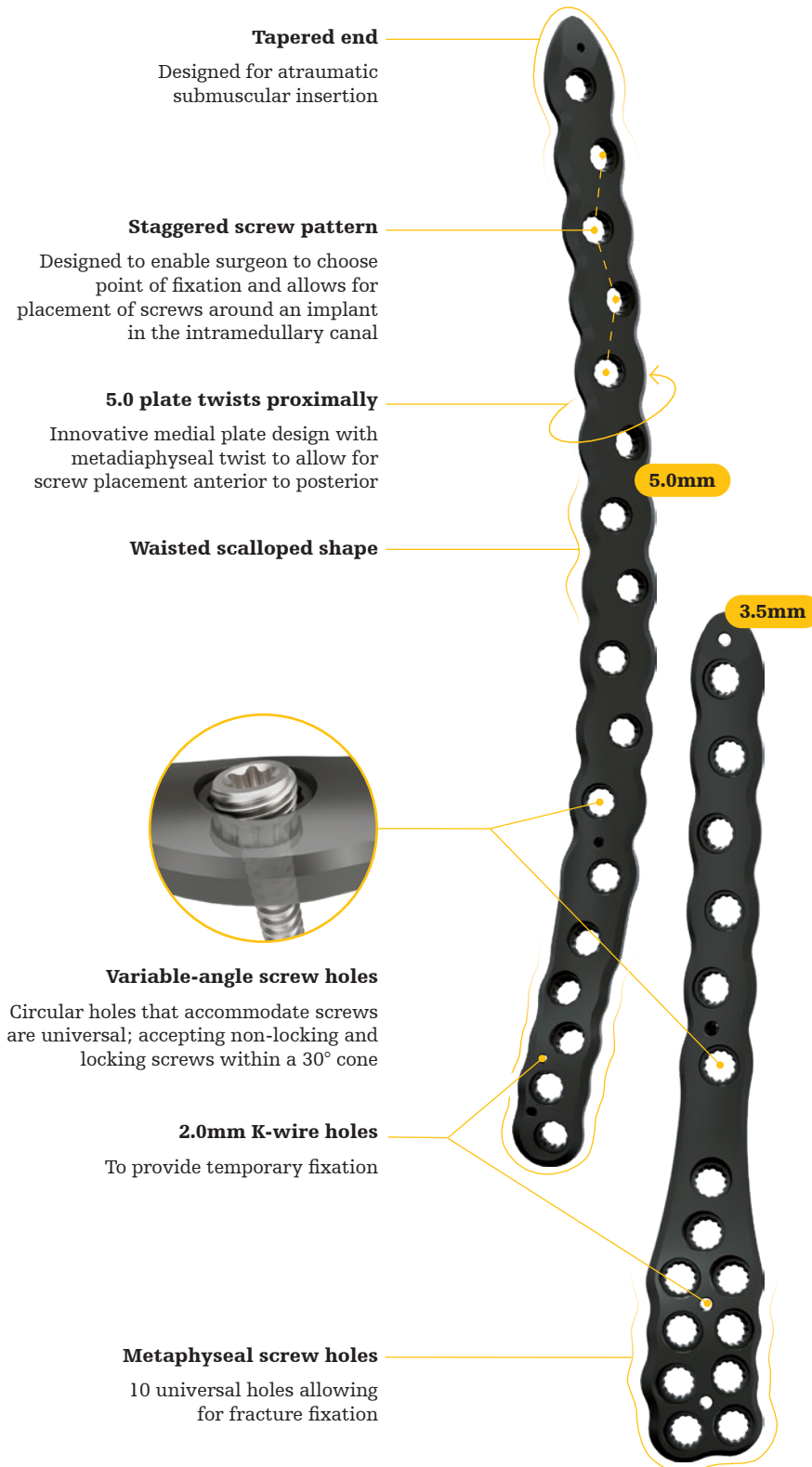
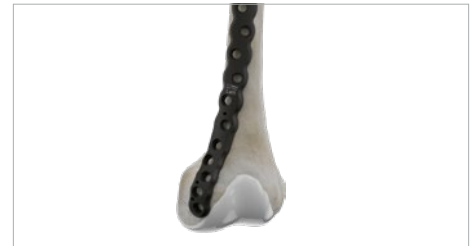


Plate placement

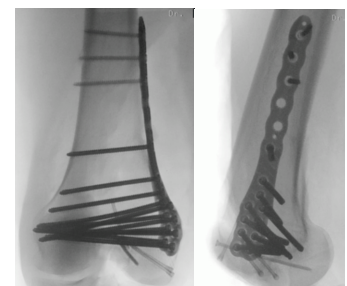


5.0mm distal medial plate



3.5mm distal medial plate

- Plate is in the proper position when the distal end of the plate is adjacent to the medial articular margin of the trochlea and anterior to the medial epicondyle
- Plate placement designed to reduce the potential for interference with the medial collateral ligament



Pangea™ Distal Medial Femur Plates

Design rationale

stryker

Fit

- Designed with the use of SOMA: Stryker Orthopedics Modeling and Analytics
- SOMA includes a database with CT scans from hospitals across the world and state of the art algorithms to mine the data for shape variability, bone density, and implant fit¹
- Can be used for Periprosthetic fractures around a femoral component, and extra-articular fractures where a nail cannot be used
- Both plates can be used as a stand-alone plate option if needed
- 5.0mm Distal Medial Femur plate may be used as medial based fixation for metadiaphyseal fractures that extend into the shaft as well as large bone defects and nonunions where enhanced fixation with a second medial plate is required in addition to a lateral plate
- 3.5mm Distal Medial Femur plate may be used for isolated medial condylar fractures or as a supplement to lateral plate fixation when dual plate fixation is desired

Technical specifications

5.0mm Distal Medial Femur Plate

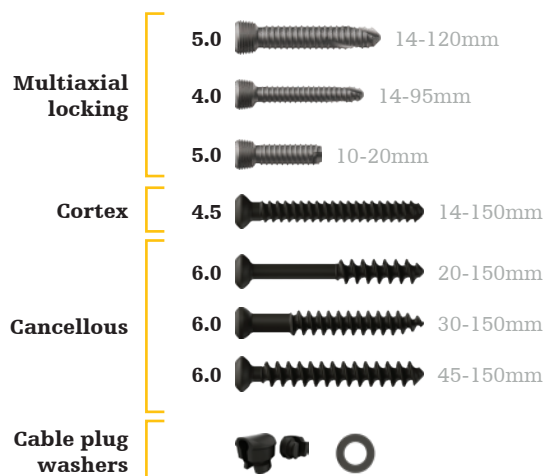
- Standard plate lengths: 151mm- 337mm (4 to 14 holes)
- Thickness: 5.0mm
- Left and right anatomic plate options
- Drill bits:**
 - 3.2mm drill bit (706406)
 - 4.3mm drill bit (706407)

3.5mm Distal Medial Femur Plate

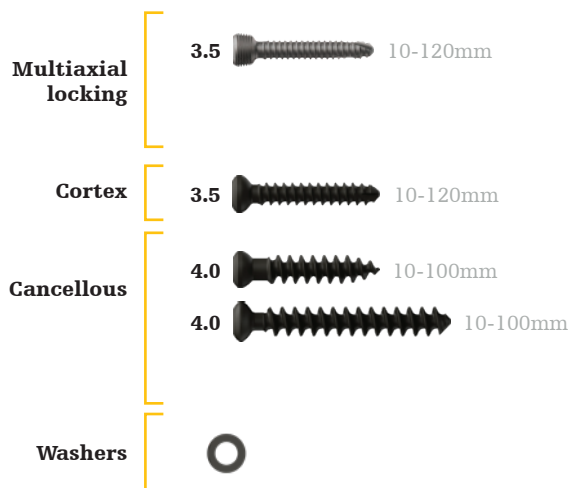
- Standard plate lengths: 96mm- 152mm (2 to 6 holes)
- Thickness: 4.0mm
- Left and right anatomic plate options
- Drill bits:**
 - 2.5mm drill bit (542020)

Screw platform

5.0mm Distal Medial Femur Plate



3.5mm Distal Medial Femur Plate



References:

- Internal Report № D0000262573, Rev AA, Selzach, Switzerland

This document is intended solely for the use of healthcare professionals. A surgeon must always rely on his or her own professional clinical judgment when deciding whether to use a particular product when treating a particular patient. Stryker does not dispense medical advice and recommends that surgeons be trained in the use of any particular product before using it in surgery. The information presented is intended to demonstrate the breadth of Stryker's product offerings. A surgeon must always refer to the package insert, product label and/or instructions for use before using any of Stryker's products. Products may not be available in all markets because product availability is subject to the regulatory and/or medical practices in individual markets. Please contact your sales representative if you have questions about the availability of products in your area. Not intended for promotional or marketing use outside of the United States and Canada. Stryker Corporation or its affiliates own, use, or have applied for the following trademarks or service marks: Pangea, Stryker. All other trademarks are trademarks of their respective owners or holders.

Content ID: PGA-EM-2_Rev-1_36123

Copyright © 2023 Stryker