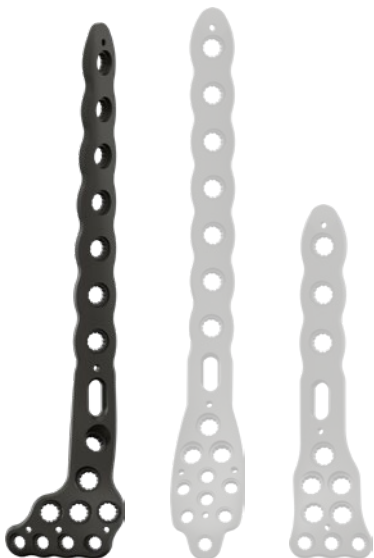


# Pangea<sup>TM</sup>

## Distal Anterolateral Tibia Plate

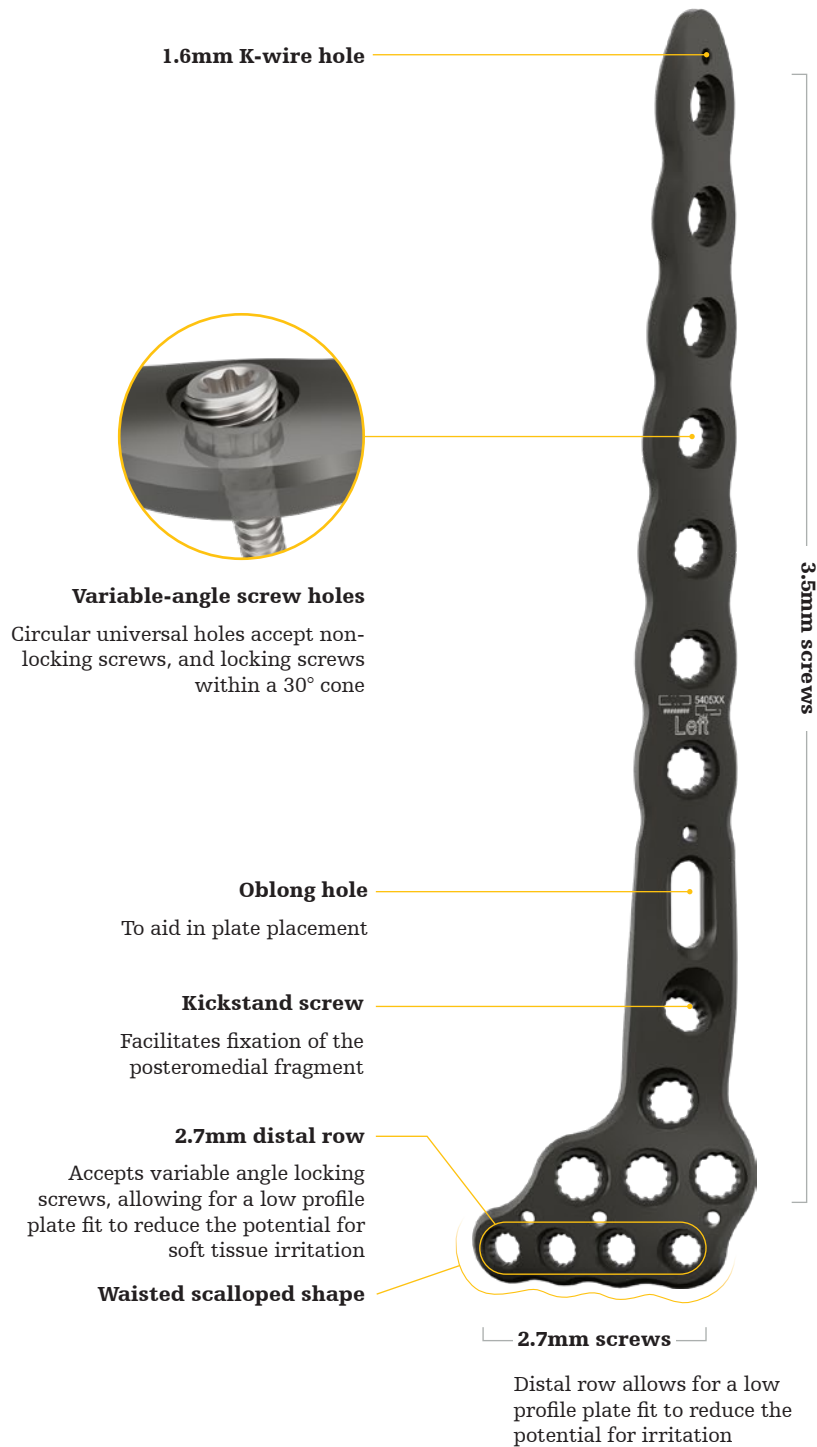
Design rationale



# Pangea Distal Anterolateral Tibia Plate

## Design rationale

**stryker**



## Plate placement



- This plate is placed on the anterolateral surface of the distal tibia
- Proper position is achieved when the distal end of the plate is adjacent to the articular surface, allowing for the distal screws to support the plafond

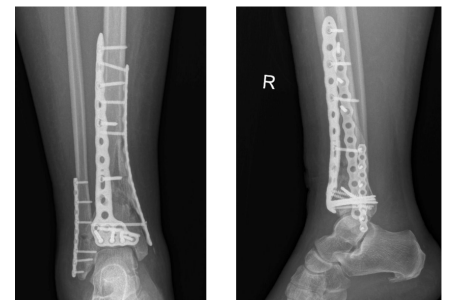


Image from Pangea  
Operative Technique<sup>1</sup>

# Pangea Distal Anterolateral Tibia Plate

## Design rationale

**stryker**

### Fit

- Curvature of the Distal Anterolateral Tibia plates allow screw placement immediately proximal to the joint line for rafting while reducing the potential for soft tissue irritation
- Shaft is anatomically curved proximally to the joint line for support distally, and designed to allow for a more centered placement of the distal screw cluster.
- Designed with the use of SOMA: Stryker Orthopedics Modeling and Analytics.
- The Distal Anterolateral Tibia Plate provides better anatomic fit compared to competitive VA LCP distal anterolateral plates<sup>2</sup>

### Technical specifications

- Standard plate lengths: 3-18 hole (91-301mm)
- Thickness: Shaft, 3.3mm, Distal 2.9mm
- Left and right anatomic plate options
- **Drill bits for T8:**  
Ø2.0mm x 135mm (542000(S))  
Ø2.0mm x 175mm (542001(S))
- **Drill bits for T15:**  
Ø2.5mm x 135mm (542020)  
Ø2.5mm x 215mm (542021)

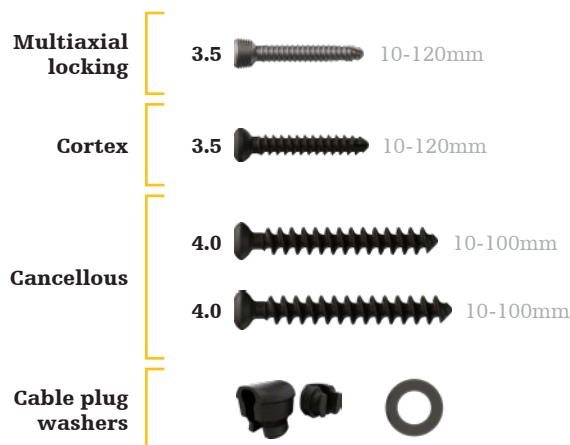


### Kickstand screw

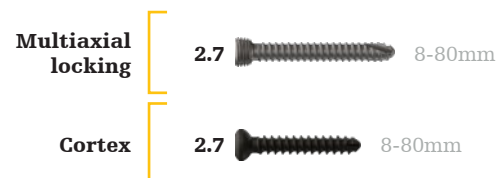
Kickstand screw with a predetermined angle designed to assist with the fixation of the posteromedial fragment. Variable angle option of the kickstand screw allows further reach for the fixation of medial malleolus fragments.

### Screw platform

#### T15 screw platform



#### T8 screw platform



#### References:

1. Pangea Distal Tibia Plating Operative Technique. PGA-ST-5, 03-2023
2. Internal Report № D0000262573, Rev AA, Selzach, Switzerland

This document is intended solely for the use of healthcare professionals. A surgeon must always rely on his or her own professional clinical judgment when deciding whether to use a particular product when treating a particular patient. Stryker does not dispense medical advice and recommends that surgeons be trained in the use of any particular product before using it in surgery.

The information presented is intended to demonstrate the breadth of Stryker's product offerings. A surgeon must always refer to the package insert, product label and/ or instructions for use before using any of Stryker's products. Products may not be available in all markets because product availability is subject to the regulatory and/ or medical practices in individual markets. Please contact your sales representative if you have questions about the availability of products in your area. Not intended for promotional or marketing use outside of the United States and Canada. Stryker Corporation or its affiliates own, use, or have applied for the following trademarks or service marks: Pangea, Stryker. All other trademarks are trademarks of their respective owners or holders.

Content ID:PGA-BL-9\_Rev-1, 12-2024

Copyright © 2023 Stryker



#### Manufacturer:

Stryker GmbH  
Bohnackerweg 1  
2545 Selzach, Switzerland

[stryker.com](https://www.stryker.com)