

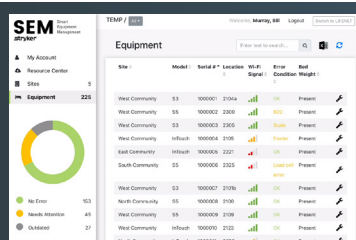
SEM Smart Equipment Management Application



Work smarter, not harder.

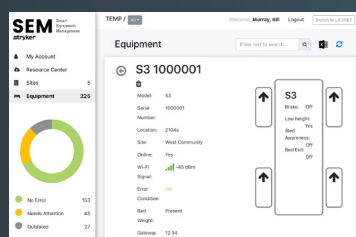
SEM (Smart Equipment Management) is a cloud-based application available for connected iBed Wireless users who are looking to gather near real time data from their Stryker MedSurg and ICU beds. With SEM, you will be able to remotely identify the bed's location, serial number, operational status, error codes, and much more¹.

This intuitive application is compatible with computers, tablets and mobile phones, allowing you the flexibility to remotely evaluate your equipment. The SEM application provides you with product information that enables you to work smarter, not harder and can save you valuable time.



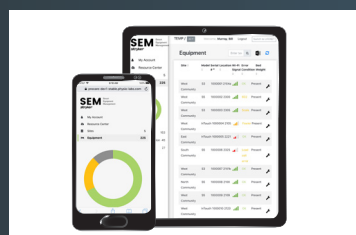
Equipment management

The SEM application offers equipment management to help you locate your Stryker beds, see whether those beds are available, and their operational status including error codes.



Workflow efficiency

Your service team no longer needs to be at the bedside to start the repair process. With the SEM application, your service team can remotely gather maintenance information and begin the troubleshoot process, helping to reduce downtime on your equipment.



Mobile-device compatible

Whether you prefer to use the SEM application from your computer, tablet or mobile phone, you are able to remotely sort, filter and search for information about your Stryker beds.

Enabled through iBed Wireless

The SEM application works with the iBed Wireless system¹ installed. SEM is compatible with connected S3 MedSurg and InTouch Critical Care Beds. iBed Wireless can interface with many information systems (Nurse Call, Middleware, etc.) and allow your facility to build a custom-end solution.

This gives caregivers the ability to help provide advanced fall prevention*, equipment management and documentation of bed-related activities.¹



InTouch Critical Care Bed



S3 MedSurg Bed

SEM Smart Equipment Management Application



Standard features

- **Model number:** 77214100
- **Equipment management**
 - Bed's location
 - Serial numbers
 - Operational status
 - Error codes, etc.
- **Workflow efficiency**
 - Remotely gather maintenance information
 - Help reduce equipment downtime
- **Compatible with many devices**
 - Computers
 - Tablets
 - Mobile phones
- **Enabled through iBed Wireless¹**

Data usage

Bandwidth used between the Stryker iBed Server and SEM

30 KB per device message (additional to the third-party subscription device messages).

Device messages are typically sent in the range of near real-time up to 30 minutes while connected. This range is dependent on the device activity (brakes applied, rails adjusted, alarms, etc.).

IP traffic environment

Source	Protocol/port number	Destination
Device Data Manager	TCP/443	Outbound only (public internet TLS 1.2 with ECDSA certificate)
Device Data Manager	TCP/80	iBed Server
iBed Server	TCP/1639	Stryker iBed Wireless Client
iBed Server	TCP/80	Device Data Manager
Stryker iBed Wireless Client	TCP/80	iBed Server

Copyright © 2018 Stryker
Printed in the U.S.A.

3800 E. Centre Avenue
Portage, MI 49002 USA
t: 269 329 2100
toll free: 800 327 0770

stryker.com

Stryker reserves the right to change specifications without notice.

Stryker Corporation or its divisions or other corporate affiliated entities own, use or have applied for the following trademarks or service marks: iBed, InTouch, S3, Stryker. All other trademarks are trademarks of their respective owners or holder.

1. The Smart Equipment Management application requires the connected iBed Wireless system, which includes Stryker radios, locators, seat license, and server application.

*When combining the proper processes and technologies to help reduce risk of bed related falls