



GRAVITY™

Titanium Suture Anchor

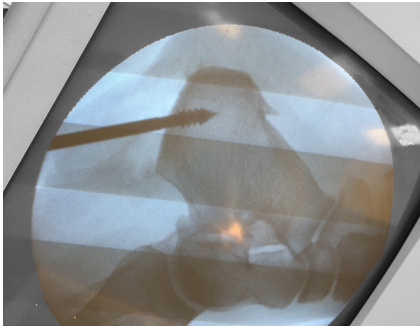


SELF-DRILLING, SELF-TAPPING

Design Surgeons:
Dr. Hyer, DPM
Dr. Anderson, MD
Dr. Cohen, MD
Dr. Lee, MD



Designed by Foot and Ankle Surgeons, for Foot and Ankle Surgery



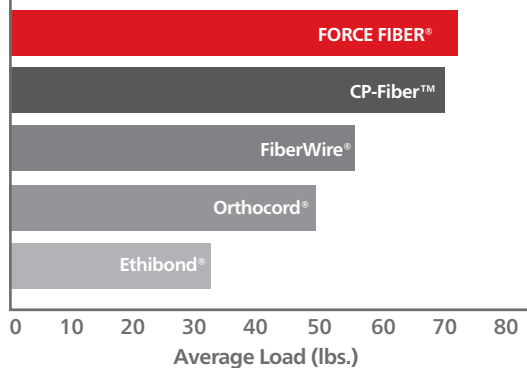
- » Self-drilling, self-tapping cutting flutes ease anchor insertion
- » Modular handle design allows for organized suture & needle deployment
- » FORCE FIBER® suture's coreless braid configuration enhances handling characteristics.
- » FORCE FIBER® suture is made from ultra-high molecular weight polyethylene material that enhances suture strength.*
- » No Silicone is added as part of the manufacturing of FORCE FIBER® product.



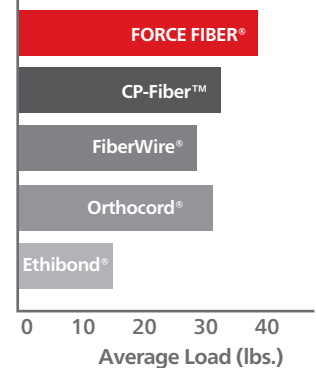
GRAVITY® Titanium Suture Anchor 5.5mm
(P/N 86TAN255)

FORCE FIBER® SUTURE STRENGTH, WHITE SIZE 2

Straight Pull Tensile*



Knot Tensile*



- » Ultra-high molecular weight polyethylene surgical suture
- » Outstanding tensile and knot strength
- » Low knot profile

FORCE FIBER® is a registered trademark of Teleflex Incorporated
*Data on file at Teleflex

Surgical Summary – Tendon Attachment

Anchor Positioning

Prior to insertion, position the driver tip to achieve the desired trajectory. While maintaining slight pressure and ensuring that the anchor is free of soft-tissue, rotate the handle clockwise to begin advancement.



Anchor Seating

Advance the anchor until the optimal depth has been reached. A driver shaft depth marker is located 1mm above the anchor and may be used as a reference during insertion.



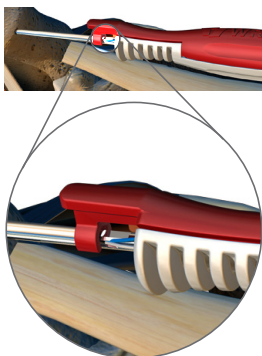
Suture Deployment

All anchors are loaded with FORCE FIBER® sutures which pass through the anchor, up the driver shaft, and wrap inside the suture cartridge. Upon final seating of the anchor, release the suture cartridge by pulling back on the cartridge's driver shaft clasp and disengaging it from the driver shaft. | **Figure 1** When the suture cartridge is fully disengaged from the handle, gently pull back on the driver handle to release the driver tip from the suture anchor. | **Figure 2**

Set aside the driver handle and maintain possession of the suture cartridge.

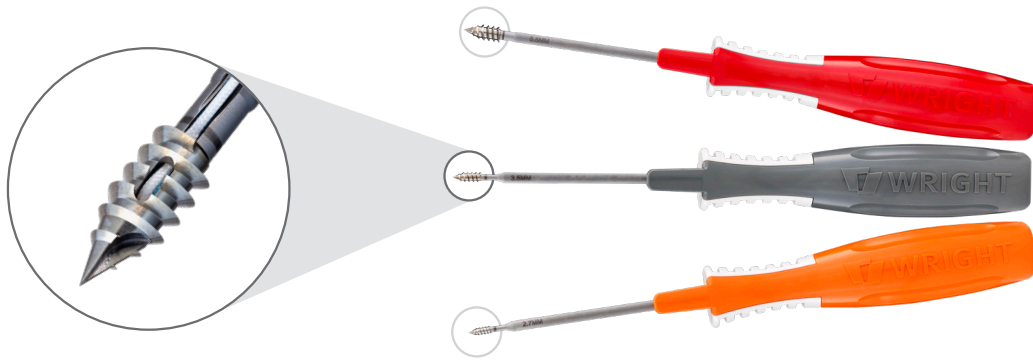
Soft-tissue Fixation

Using a needle driver, hemostat, or forceps, remove each needle from the cartridge and drive them through the desired soft-tissue, tensioning the tissue as needed. Secure the soft-tissue to the bone by tying knots with the suture. It may be helpful to use the suture cartridge to organize the needles and suture during soft-tissue fixation.

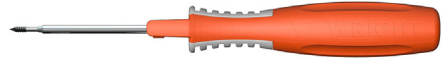

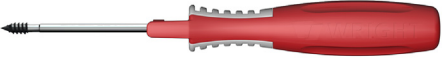


| Figure 2

| Figure 1



System Information

Part Number	Anchor Size (Diameter/Length)	Suture Size / Type	Suture	Image
86TA2027	2.7 x 7.6mm	2-0 FORCE FIBER®	1	
86TAN035	3.5 x 9.6mm	#0 FORCE FIBER®	2	
86TAN255	5.5 x 12.7mm	#2 FORCE FIBER®	2	

Sizing and Ordering Information

Part Number	Anchor Size (Diameter/Length)	Suture Size / Type	Suture Quantity
86TA2027	2.7 x 7.6mm	2-0 FORCE FIBER®	1
86TAN035	3.5 x 9.6mm	#0 FORCE FIBER®	2
86TAN255	5.5 x 12.7mm	#2 FORCE FIBER®	2



1023 Cherry Road
 Memphis, TN 38117
 800 238 7117
 901 867 9971
 www.wright.com

56 Kingston Road
 Staines-upon-Thames
 Surrey TW18 4NL
 United Kingdom
 +44 (0)845 833 4435

161 Rue Lavoisier
 38330 Montbonnot Saint Martin
 France
 +33 (0)4 76 61 35 00

™ and ® denote Trademarks and Registered Trademarks of Wright Medical Group N.V. or its affiliates.
 ©2018 Wright Medical Group N.V. or its affiliates. All Rights Reserved.