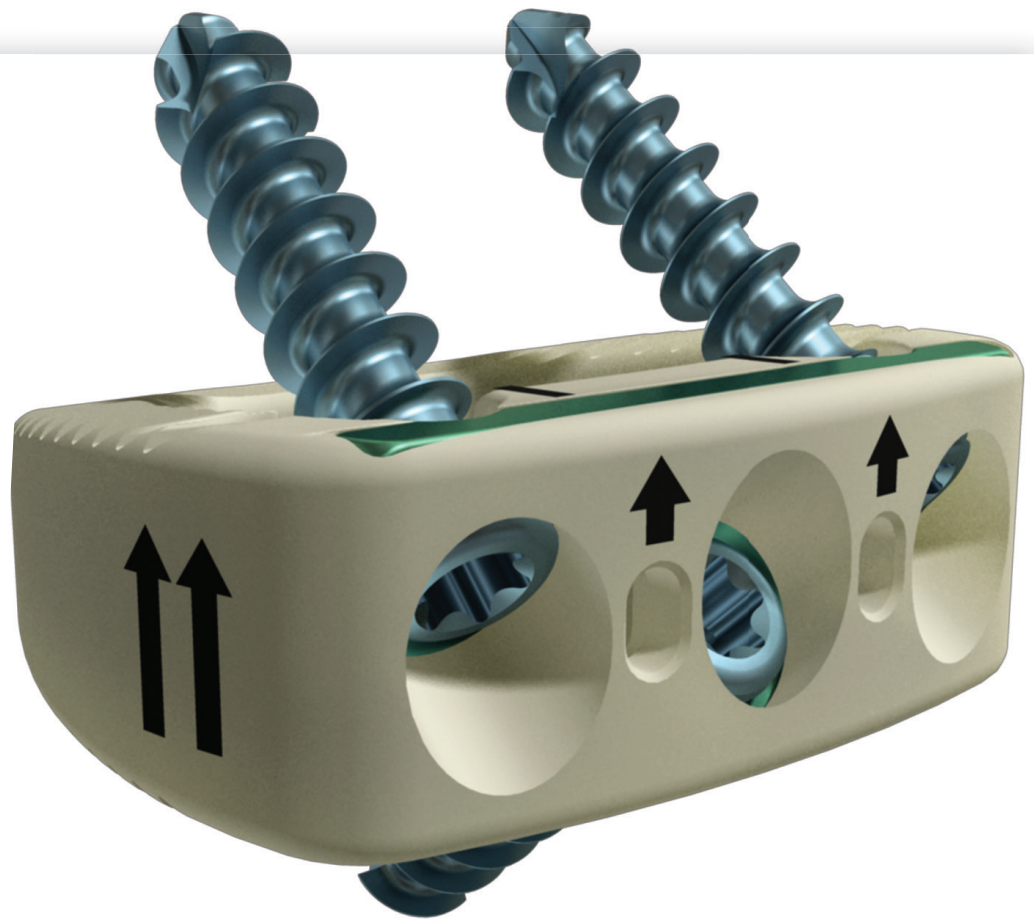


Chesapeake[®]

Anterior-Lumbar Stabilization System

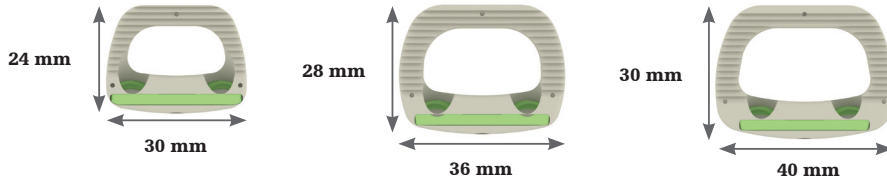


The Chesapeake Anterior-Lumbar Stabilization System is a multi-screw construct that provides stability to the anterior column, while reducing the need for the supplemental fixation* in the lumbar spine. This system offers a comprehensive range of sizes carefully designed to assist with the restoration of sagittal balance and disc height. Featuring SMARTLock Technology, Chesapeake allows for appropriate implant placement required to achieve fusion.

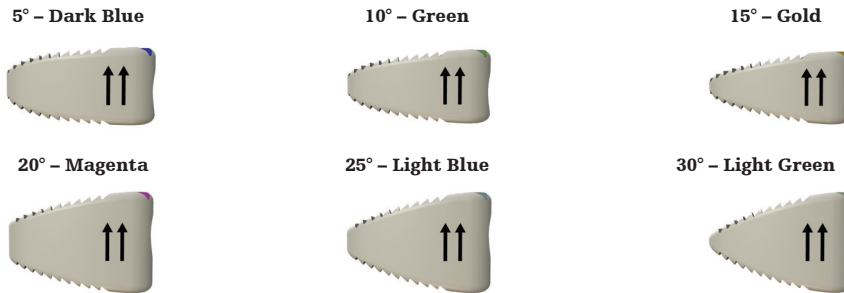
*Hyperlordotic angles (>15°) require supplemental fixation

Chesapeake Anterior-Lumbar Stabilization System

Interbody footprints

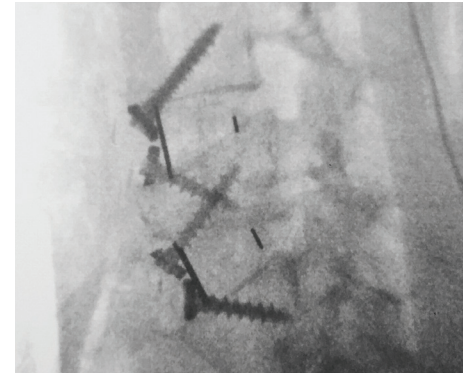
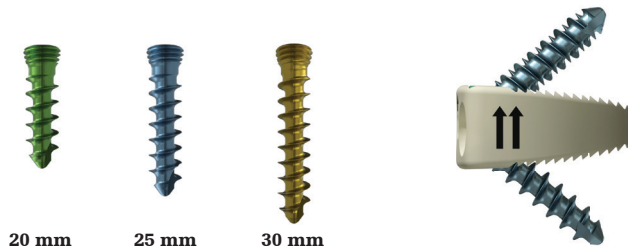


Interbody lordoses



Heights range from 11–19 mm; some heights are not available in 20°, 25°, and 30° lordosis*.

Screw lengths



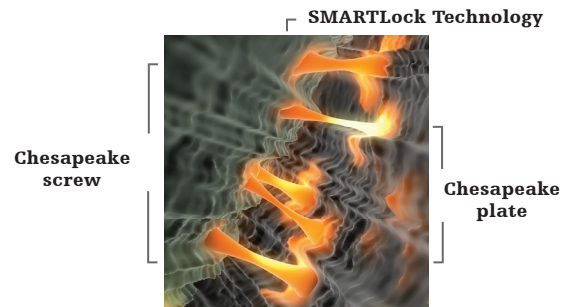
Fluoroscopic imaging showing Chesapeake Anterior-Lumbar

- Anterior fixation with zero-profile design
- Featuring revolutionary SMARTLock Technology, which requires no additional locking mechanism
- A multi-screw construct with 14° converging angles
- Manufactured from biocompatible PEEK polymer
- Full range of sizes designed to offer a comprehensive solution to aid in the restoration of sagittal balance and disc height

*Hyperlordotic angles (>15°) require supplemental fixation

SMARTLock Technology

- Difference in material hardness promotes formation of an autogenic lock between the screw and the plate
- No additional locking mechanism required
- Allows for repeated screw adjustment up to three times without compromising the locking feature



Spine division

A surgeon must always rely on his or her own professional clinical judgment when deciding whether to use a particular product when treating a particular patient. Stryker does not dispense medical advice and recommends that surgeons be trained in the use of any particular product before using it in surgery.

The information presented is intended to demonstrate the breadth of Stryker product offerings. A surgeon must always refer to the package insert, product label and/or instructions for use before using any Stryker product. The products depicted are CE marked according to the Medical Device Directive 93/42/EEC. Products may not be available in all markets because product availability is subject to the regulatory and/or medical practices in individual markets. Please contact your Stryker representative if you have questions about the availability of Stryker products in your area.

Stryker Corporation or its divisions or other corporate affiliated entities own, use or have applied for the following trademarks or service marks: Chesapeake, K2M, SMARTLock, Stryker. All other trademarks are trademarks of their respective owners or holders.

CHEAL-SS-1_23304
Copyright © 2020 Stryker


K2M, Inc.
600 Hope Parkway SE
Leesburg, VA 20175
t: 571 919 2000
www.stryker.com