

Capri®

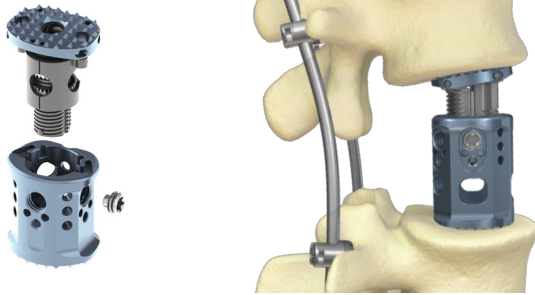
Thoracolumbar Expandable Corpectomy Cage System



The Capri Thoracolumbar Expandable Corpectomy Cage System offers an innovative solution to provide anterior spinal column support in cases to replace a collapsed, damage, or unstable vertebral body due to tumor or trauma. Offered in various footprint options, this versatile system allows for in-situ height expansion and endplate angulation.

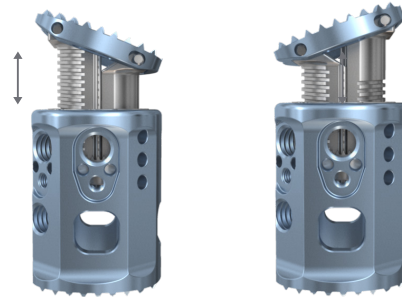
Capri Thoracolumbar Expandable Corpectomy Cage System

Corpectomy cage design



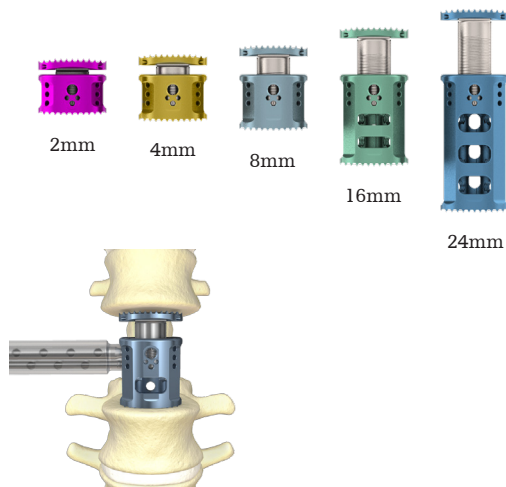
- Multiple surgical approach options: anterior, posterior, and direct lateral
- Modular cage design
- Locking screw (torque to 48 in-lbs)

Lordosis/kyphosis



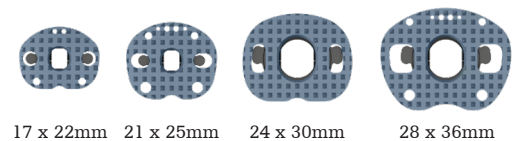
- Lordosis/Kyphosis Expansion Driver allows for controlled in-situ endplate angulation
- Adjustable endplate angulation: -20° to 20°
- Fixed endplate angulation: 0° , 10° , and 20°

Height expansion



Height Expansion Driver allows for controlled in-situ expansion, heights range 23–122mm

Available footprints



Interchangeable External Housing and Internal Expansion Towers:

- 17 x 22mm and 21 x 25mm
- 24 x 30mm and 28 x 36mm

Spine division

A surgeon must always rely on his or her own professional clinical judgment when deciding whether to use a particular product when treating a particular patient. Stryker does not dispense medical advice and recommends that surgeons be trained in the use of any particular product before using it in surgery.

The information presented is intended to demonstrate the breadth of Stryker product offerings. A surgeon must always refer to the package insert, product label and/or instructions for use before using any Stryker product. The products depicted are CE marked according to the Medical Device Directive 93/42/EEC. Products may not be available in all markets because product availability is subject to the regulatory and/or medical practices in individual markets. Please contact your Stryker representative if you have questions about the availability of Stryker products in your area.

Stryker Corporation or its divisions or other corporate affiliated entities own, use or have applied for the following trademarks or service marks: Capri, K2M, Stryker. All other trademarks are trademarks of their respective owners or holders.

Content ID: CAPLX-SS-1_24544
Copyright © 2020 Stryker



K2M, Inc.
600 Hope Parkway SE
Leesburg, VA 20175
t: 571 919 2000
www.stryker.com