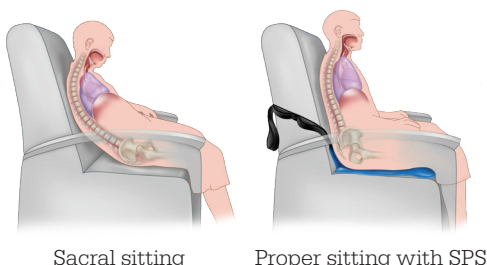


Sage
Prevalon

Seated Positioning System (SPS)

The Seated Positioning System (SPS) is designed to support early patient mobility and reduce risk factors for pressure injury and falls through:

- **Reducing patient sliding** and promoting upright sitting when seated in the chair¹
- **Requiring less physical exertion** and supporting safe patient handling as healthcare workers help patients sit upright²
- **Redistributing pressure** in the sacral region while seated in the chair³



Sacral sitting

Proper sitting with SPS



In one limited year-to-year implementation

SPS helped one site achieve a

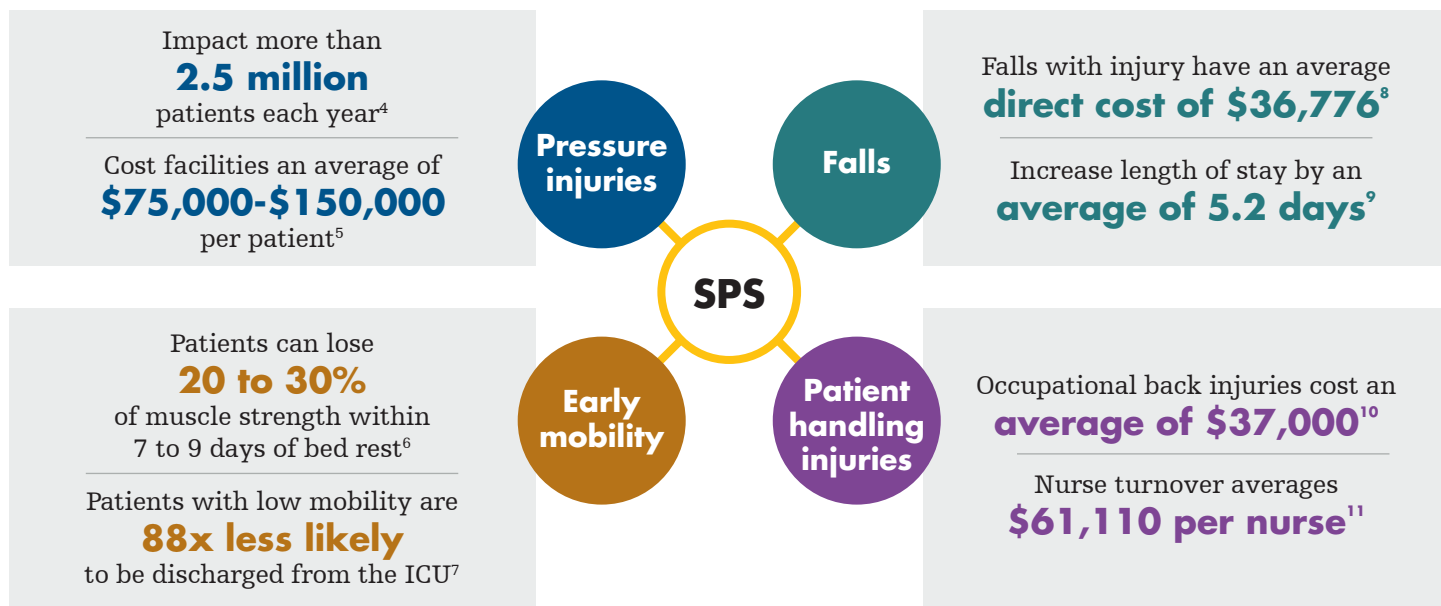
58% ↓
reduction rate
in chair-related falls³

- 1 Multi-grip handles**
Sturdy handles allow for safe, effective boosting and support ergonomics for healthcare workers' posture and body mechanics.
- 2 Multi-chamber air cushion**
Redistributes pressure and provides comfort and security while allowing patients to shift in their chairs. Outer chambers enhance stability and help patients remain upright.
- 3 Microclimate Management Pad**
Made with highly breathable materials to allow airflow to the patient and wick moisture away from the patient's skin.
- 4 One-way glide**
Reduces the effort required to achieve proper seated positioning and helps resist forward movement due to slouching, helping patients remain in an optimal position.



Understand the risk

Pressure injuries, early mobility, patient handling injuries and falls by the numbers



NPIAP Guideline¹²: Use a pressure redistributing chair cushion for individuals sitting in chairs or wheelchairs.



22 in x 33 in
Weight limit: 350 lb / 159 kg

Sage Prevalon Seated Positioning System

(1) Seated Positioning Cushion with Fastener Strips
(1) Microclimate Management Pad

5 systems/case
Reorder #7530

High elevation (above 3000 ft)

5 systems/case
Reorder #7531



Microclimate Management Pad

23 in x 36 in

30 pads/case (6 bags of 5)
Reorder #7550

References: 1. Data on file. Stryker. CustomerOne Report, SPS Evaluations Aggregate. 2017. 2. Fragala G, Fragala M. Repositioning patients in chairs: an improved method. *Workplace Health Saf.* 2013;61(4):141-144. 3. Jones LA, Altman KM. Slips and slides: preventing hospitalized patients from falling out of chairs. *Nursing.* 2025;55(6):54-60. 4. Berlowitz D, Lukas CV, Parker V, et al. Preventing pressure ulcers in hospitals: a toolkit for improving quality of care. *AHRQ.* 2011. 5. National Pressure Injury Advisory Panel. 2022 PI incidence statistics. *NPIAP.* <https://www.npiap.com>. 6. Bhoi AK, Smitanjali S, Rout D, Dash P, Mohanty NR. Effects of extended bed rest in ICU immobilization and inactivity. *Int J Allied Med Sci Clin Res.* 2024;12(4):1-6. 7. Vollman K, Woelfel S. Moving the critically ill patient. Presentation at the National Pressure Injury Advisory Panel. April 23, 2024. 8. Dykes PC, Curtin-Bowen M, Lipsitz S, et al. Cost of inpatient falls and cost-benefit analysis of implementation of an evidence-based fall prevention program. *JAMA Health Forum.* 2023;4(1):e225125. 9. Hasan B, Bechenati D, Bethel HM, et al. A systematic review of length of stay linked to hospital-acquired falls, pressure ulcers, central line associated bloodstream infections, and surgical site infections. *Mayo Clin Proc Innov Qual Outcomes.* 2025;9(3):100607. 10. Ghosh T. Occupational health and hazards among health care workers. *Int J Occup Saf Health.* 2013;3(1):1-4. 11. NSI Nursing Solutions Inc. 2025 NSI National Health Care Retention and RN Staffing Report. NSI Nursing Solutions Inc. 2025. 12. Haesler E, editor. Prevention and treatment of pressure ulcers or injuries: clinical practice guideline. The international guideline. European Pressure Ulcer Advisory Panel, National Pressure Injury Advisory Panel, Pan Pacific Pressure Injury Alliance. 2019.

This document is intended solely for the use of healthcare professionals. A healthcare professional must always rely on his or her own professional clinical judgment when deciding whether to use a particular product when treating a particular patient. Stryker does not dispense medical advice and recommends that healthcare professionals be trained in the use of any particular product before using it. The information presented is intended to demonstrate the breadth of Stryker product offerings. A healthcare professional must always refer to the package insert, product label and/or instructions for use before using any Stryker product. Products may not be available in all markets because product availability is subject to the regulatory and/or medical practices in individual markets. Please contact your Stryker representative if you have questions about the availability of Stryker products in your area. Stryker Corporation or its divisions or other corporate affiliated entities own, use or have applied for the following trademarks or service marks: Prevalon, PrimoFit+, Sage and Stryker. All other trademarks are trademarks of their respective owners or holders. The absence of a product, feature, or service name, or logo from this list does not constitute a waiver of Stryker's trademark or other intellectual property rights concerning that name or logo.

01/2026

SAGE-PSPS-SS-2517476_REV-0_en_us | Copyright © 2026 Stryker

Sage Products LLC
3909 Three Oaks Road
Cary, IL 60013 U.S.A.
800 323 2220

[stryker.com](https://www.stryker.com)