



Clinical cases collection

Physician

Dr. Milan Patel

Houston, TX
The University of Texas
MD Anderson Cancer Center

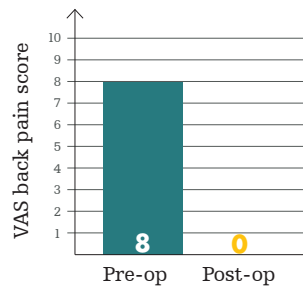
Clinical case

Patient: Female, 64

Level: T10

Reason: Vertebral tumor and compression fracture

Visual analog scale

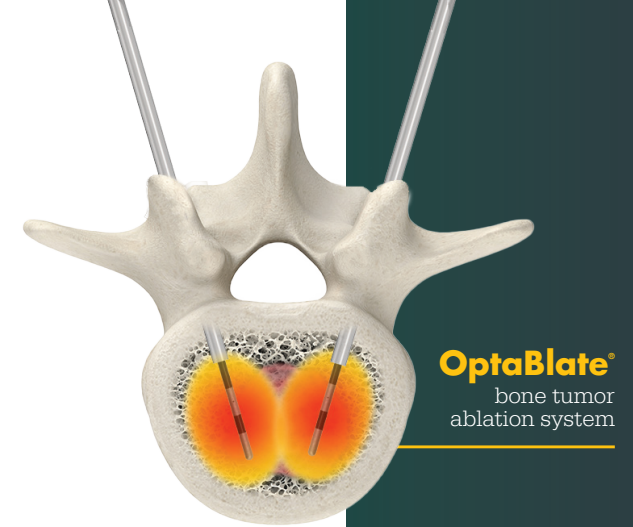


Case presentation

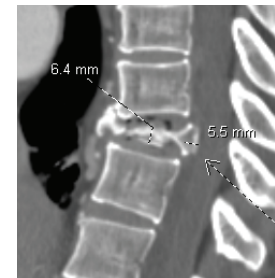
A 64-year-old woman diagnosed with metastatic anal cancer suffered a pathologic fracture to T10. The fracture progressively worsened with associated intractable, focal mid-back pain interfering with daily activities.

CT guidance was used due to the significant height loss and tumor involvement. The procedure was successfully completed using 15mm OptaBlate bone tumor ablation probes at 80 degrees for nine minutes, followed by iVAS Elite balloons to create a cavity and 5.0mm SpineJacks. A total of 5.5ccs of VertaPlex HV cement was injected.

Prior to the procedure, the patient reported a pain score of 8/10 on the VAS scale. At the one-week follow up, the patient reported that they were pain free. The patient reported no complications and was extremely happy and thankful with no further complaints.

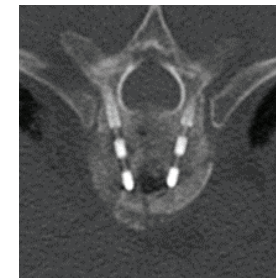


Pre-op image



Pre-op CT (lateral view)

Surgical procedure

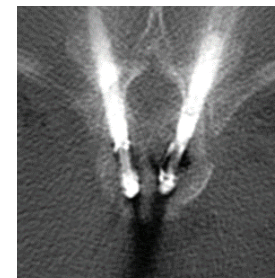


Procedure CT (axial view)



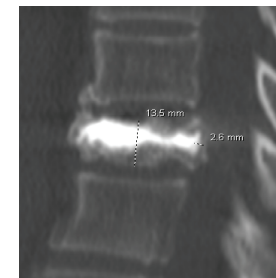
Procedure CT (axial view)

Surgical procedure



Procedure CT (axial view)

Post-op image



Post-op CT scan (lateral view)

Interventional Spine

Bone cement: Serious adverse events, some with fatal outcome, associated with the use of bone cements for vertebroplasty, kyphoplasty and sacroplasty include myocardial infarction, cardiac arrest, cerebrovascular accident, pulmonary embolism and cardiac embolism. Although it is rare, some adverse events have been known to occur beyond one year post-operatively. Additional risks exist with the use of bone cement. Please see the IFU for a complete list of potential risks.

This document is intended solely for the use of healthcare professionals. A physician must always rely on his or her own professional clinical judgment when deciding whether to use a particular product when treating a particular patient. We do not dispense medical advice and recommend that physicians be trained in the use of any particular product before using it.

The information presented is intended to demonstrate Stryker's products. A physician must always refer to the package insert, product label and/or instructions for use, including the instructions for cleaning and sterilization (if applicable), before using any of Stryker's products. Products may not be available in all markets because product availability is subject to the regulatory and/or medical practices in individual markets. Please contact your representative if you have questions about the availability of Stryker's products in your area.

Stryker or its affiliated entities own, use or have applied for the following trademarks or service marks: OptaBlate, Stryker and VertaPlex. All other trademarks are trademarks of their respective owners or holders.

The absence of a product, feature, service name, or logo from this list does not constitute a waiver of Stryker's trademark or other intellectual property rights concerning that name or logo.

D0000269553

Copyright © 2023 Stryker

Stryker Instruments
1941 Stryker Way
Portage, MI 49002

[strykerIVS.com](https://www.strykerIVS.com)