



Clinical cases collection

Physician

Dr. Alex Lionberg
Community Hospital
Munster, Indiana

Clinical case

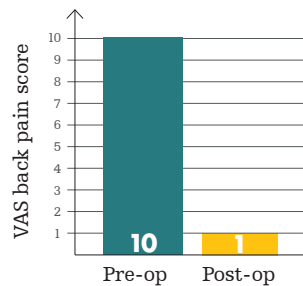
Patient: Female, 76

Level: L1

Reason: Vertebral tumor and compression fracture with wedge deformity

Case type: OptaBlate 20mm and iVAS Elite 10g 15mm

Visual analog scale

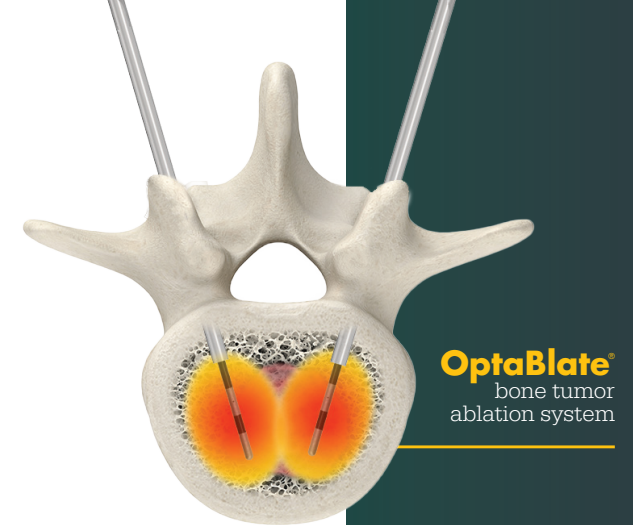


Case presentation

A 76-year-old female suffered a fall, resulting in sudden onset back pain. The patient initially presented to the hospital with severe pain and was unable to undergo conservative therapy. A chest X-ray and MRI revealed a lung mass, but did not definitively show a lesion. A CT abdomen was ordered for an unrelated issue and revealed a suspected lytic lesion at the fractured site. The patient underwent a biopsy of the lesion, bone tumor ablation and balloon kyphoplasty in a single session.

The procedure was successfully completed in approximately 40 minutes, using the 20mm OptaBlate ablation probes and a bi-lateral approach. The balloon kyphoplasty was performed using iVAS Elite and filled with 5ccs of VertaPlex HV bone cement.

Prior to the procedure, the patient reported a pain score of 10/10 on the VAS scale. At the time of discharge, the patient reported pain was reduced to a 1/10.

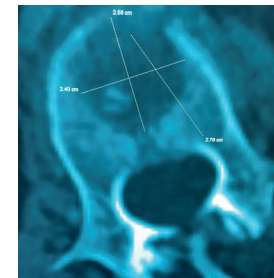


OptaBlate®
bone tumor
ablation system

Pre-op images

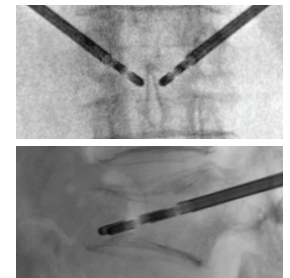


Pre-op CT (lateral view)



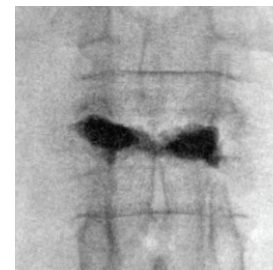
Pre-op CT (axial view)

Surgical procedure



Procedure fluoro
(AP and lateral view)

Post-op images



Post-op fluoro (AP view)



Post-op fluoro (lateral view)

Interventional Spine

Bone cement: Serious adverse events, some with fatal outcome, associated with the use of bone cements for vertebroplasty, kyphoplasty and sacroplasty include myocardial infarction, cardiac arrest, cerebrovascular accident, pulmonary embolism and cardiac embolism. Although it is rare, some adverse events have been known to occur beyond one year post-operatively. Additional risks exist with the use of bone cement. Please see the IFU for a complete list of potential risks.

This document is intended solely for the use of healthcare professionals. A physician must always rely on his or her own professional clinical judgment when deciding whether to use a particular product when treating a particular patient. We do not dispense medical advice and recommend that physicians be trained in the use of any particular product before using it.

The information presented is intended to demonstrate Stryker's products. A physician must always refer to the package insert, product label and/or instructions for use, including the instructions for cleaning and sterilization (if applicable), before using any of Stryker's products. Products may not be available in all markets because product availability is subject to the regulatory and/or medical practices in individual markets. Please contact your representative if you have questions about the availability of Stryker's products in your area.

Stryker or its affiliated entities own, use, or have applied for the following trademarks or service marks: iVAS, OptaBlate, Stryker and VertaPlex. All other trademarks are trademarks of their respective owners or holders.

The absence of a product, feature, service name, or logo from this list does not constitute a waiver of Stryker's trademark or other intellectual property rights concerning that name or logo.

D0000243068

Copyright © 2023 Stryker

Stryker Instruments
1941 Stryker Way
Portage, MI 49002