

Clinical cases collection

Physician

Dr. Vijayalekshmi Nair

Ira Davenport Hospital
Bath, NY

Clinical case

Patient: Female, 68

Level: L4

Reason: Osteoporotic vertebral
compression fracture

Case type: OmniCurve 11g 20mm

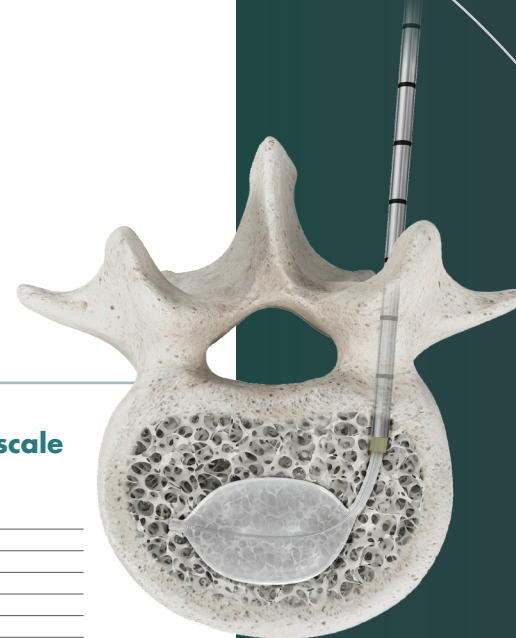
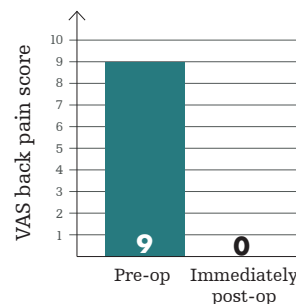
Case presentation

A 68-year-old female patient with a history of osteoporosis, sustained an A1 vertebral compression fracture (VCF) at L4 following multiple severe coughing episodes caused by pneumonia.

The patient had been managing the injury conservatively for seven months. Her pre-operative VAS pain score was a 9 out of 10. The decision was made to treat the fracture with an 11g 20mm OmniCurve balloon, followed by an injection of 9.0 cc of VertaPlex HV bone cement, using the AutoPlex mixer and delivery system.

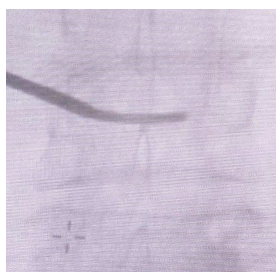
The procedure was successful, achieving full vertebral stabilization and resulting in a post-operative VAS pain score of 0 out of 10 by the time of discharge later that day.

Visual analog scale

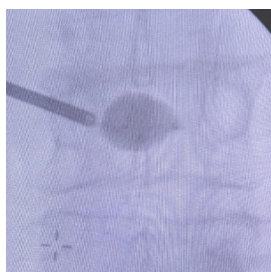


OmniCurve®
curved balloon system

Surgical procedure images



Procedure fluoro
(AP view)



Procedure fluoro
(AP view)



Procedure fluoro
(AP view)

Post-op image



Post-op fluoro
(AP view)



Interventional Spine

Bone cement: Serious adverse events, some with fatal outcome, associated with the use of bone cements for vertebroplasty, kyphoplasty and sacroplasty include myocardial infarction, cardiac arrest, cerebrovascular accident, pulmonary embolism and cardiac embolism. Although it is rare, some adverse events have been known to occur beyond one year post-operatively. Additional risks exist with the use of bone cement. Please see the IFU for a complete list of potential risks.

This document is intended solely for the use of healthcare professionals. A physician must always rely on his or her own professional clinical judgment when deciding whether to use a particular product when treating a particular patient. We do not dispense medical advice and recommend that physicians be trained in the use of any particular product before using it.

The information presented is intended to demonstrate Stryker's products. A physician must always refer to the package insert, product label and/or instructions for use, including the instructions for cleaning and sterilization (if applicable), before using any of Stryker's products. Products may not be available in all markets because product availability is subject to the regulatory and/or medical practices in individual markets. Please contact your representative if you have questions about the availability of Stryker's products in your area.

Stryker or its affiliated entities own, use, or have applied for the following trademarks or service marks: AutoPlex, OmniCurve, Stryker and VertaPlex. All other trademarks are trademarks of their respective owners or holders.

The absence of a product, feature or service name, or logo from this list does not constitute a waiver of Stryker's trademark or other intellectual property rights concerning that name or logo.