

# Prophecy<sup>®</sup> Footprint<sup>™</sup>

## Surgical Planning for Total Ankle Replacement

### Required inputs protocol

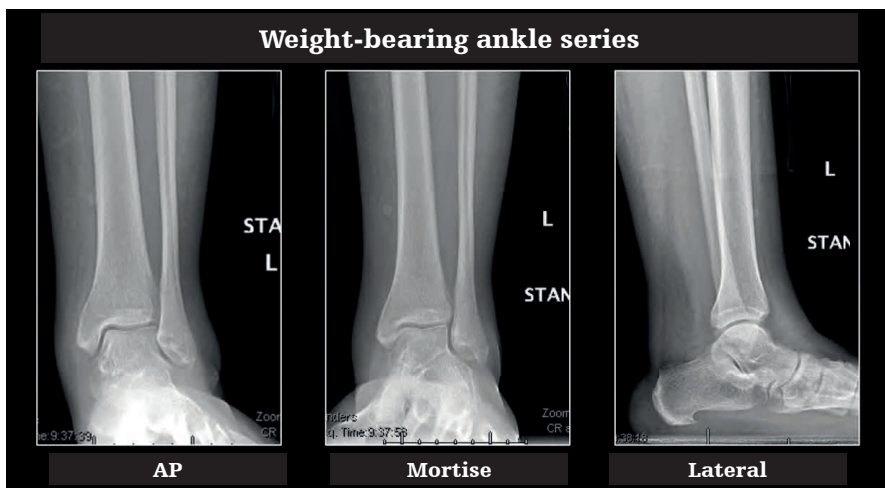
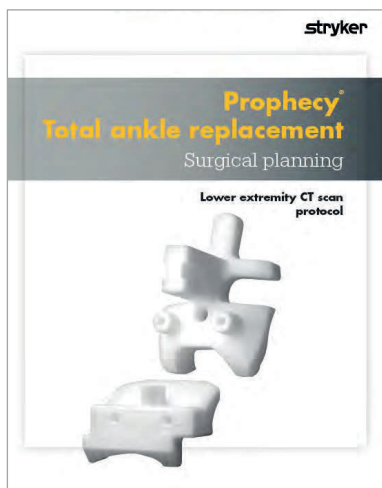


The Prophecy Footprint report is a patient specific pre-operative planning tool for total ankle ancillary procedure considerations. This Required Input Protocol can be utilized with Prophecy Surgical Planning for Infinity®, Inbone® and Invision® total ankle systems. The purpose of this document is to specify the minimum required inputs (and additional optional inputs) needed for Prophecy Footprint evaluation. Upload to [stryker.link/prophecyportal](https://stryker.link/prophecyportal)

### Required

#### All X-ray images must adhere to the following basic requirements:

- ▶ File type should be DICOM or high quality image (JPEG, PNG, etc.). Images must be of sufficient resolution to distinguish individual bones.
- ▶ All X-rays must have “weight-bearing” confirmation or equivalent labels visible in all images where positioning is uncertain.
- ▶ X-rays must include appropriate “Left/Right” labels.
- ▶ X-rays must be anonymized.
- ▶ X-rays must have date of capture confirmation.



☐ CT Scan per standard Prophecy protocol document #AP-004164

☐ Weight-bearing X-ray ankle series: AP, mortise, and lateral



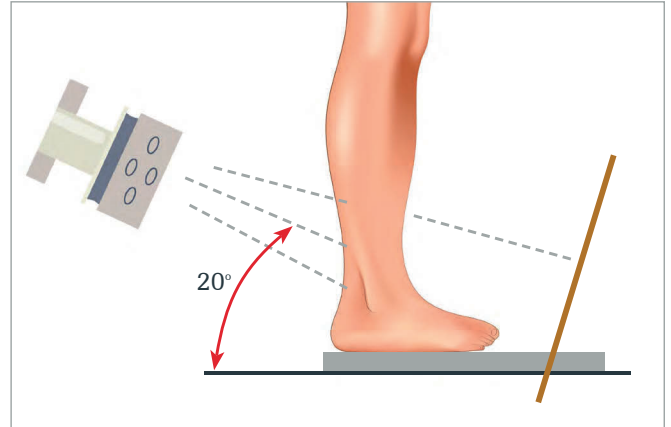
☐ Weight-bearing Foot X-ray series: lateral\* and dorsoplantar

\*May omit duplicate Lateral Foot X-ray if toes are in Lateral Ankle X-ray.

## Required



- ☐ Weight-bearing hindfoot alignment or Saltzman view



Radiographic positioning for hindfoot alignment view.

## Strongly recommended

### ☐ Pre-Op clinical notes:

- Age
- Physical condition
- History of previous procedures
- Diagnosis
- History of neuropathy
- History of infection



- ☐ Medial oblique foot X-ray



- ☐ Mechanical alignment view (hip-knee-ankle)

This document is intended solely for the use of healthcare professionals. A surgeon must always rely on his or her own professional clinical judgment when deciding whether to use a particular product when treating a particular patient. Stryker does not dispense medical advice and recommends that surgeons be trained in the use of any particular product before using it in surgery.

The information presented is intended to demonstrate a Stryker product. A surgeon must always refer to the package insert, product label and/or instructions for use, including the instructions for cleaning and sterilization (if applicable), before using any Stryker product. Products may not be available in all markets because product availability is subject to the regulatory and/or medical practices in individual markets. Please contact your Stryker representative if you have questions about the availability of Stryker products in your area.

The instructions for use, operative techniques, cleaning instructions, patient information leaflets and other associated labeling may be requested online at [ifu.stryker.com](http://ifu.stryker.com) or [stryker.com](http://stryker.com). If saving the instructions for use, operative techniques, cleaning instructions from the above mentioned websites, please make sure you always have the most up to date version prior to use.

Stryker Corporation or its divisions or other corporate affiliated entities own, use or have applied for the following trademarks or service marks: Footprint, Prophecy, Stryker. All other trademarks are trademarks of their respective owners or holders.

AP-014073D\_2024  
Copyright © 2024 Stryker



**Manufacturer:**  
Wright Medical  
Technology, Inc.  
1023 Cherry Road  
Memphis, TN 38117  
[www.stryker.com](http://www.stryker.com)

**Authorized  
representative:**  
Tornier SAS  
161 Rue Lavoisier  
38330 Montbonnot  
Saint Martin  
France  
+33 (0)4 76 61 35 00