



**stryker**

## Maximize the value of your investment

### Customized financing

Through Stryker's **Flex Financial** program, we provide a range of smart alternatives designed to fit your organization's needs. Choose from numerous payment structures that can be customized to meet your budgetary needs and help build long-term financial stability.

### Services & support

Stryker's **ProCare** solutions are designed to decrease downtime, improve employee satisfaction, and optimize the performance of your visualization system. When we focus on what we do best – technology and equipment – your staff can spend more time caring for patients.

Copyright © 2019 Stryker. Stryker Corporation or its affiliates own, use, or have applied for the following trademarks or service marks: Stryker, SPY, SPY-PHI, and PneumoClear. All other trademarks are trademarks of their respective owners or holders.

[stryker.com](http://stryker.com)



**stryker**

## See your patients in a whole new light

### 1688 Advanced Imaging Modalities (AIM) 4K Platform

Introducing the first Fluorescence 4K  
visualization system

# Brilliant Visualization

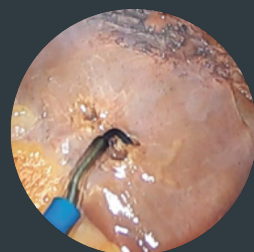
## Introducing PneumoClear, the smart insufflator



The first all-inclusive insufflation system

### Consistently clear images<sup>1</sup>

Integrated smoke evacuation with smart inflow and outflow management designed to maintain stability while actively evacuating smoke.



Conventional Insufflation without smoke evacuation



PneumoClear smart insufflation with smoke evacuation

### Control of your environment

Addresses fluctuations in pressure with advanced insufflation technology and newly developed operating modes.

### All-in-one integration

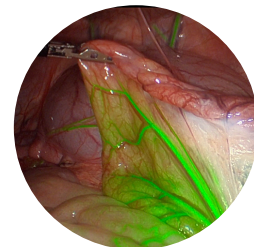
All-inclusive system of heated and humidified CO2 with active smoke evacuation in a single lightweight and flexible tube set.

<sup>1</sup>1000902558, Image Clarity - A PneumoClear Study

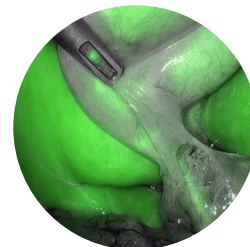
# Brilliant Visualization

## Advanced Imaging Modalities

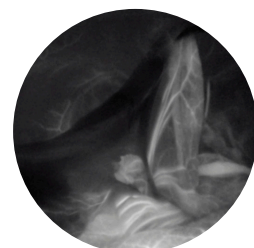
Only the Stryker 1688 AIM 4K Platform brings together real-time imaging of anatomy, automated light control and insufflation with heating, humidification and smoke evacuation all in one system for a seamless workflow.



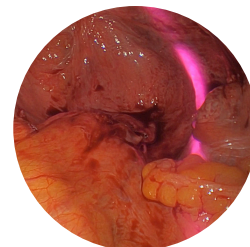
**SPY Overlay**  
4K fluorescence overlaid on a white light image



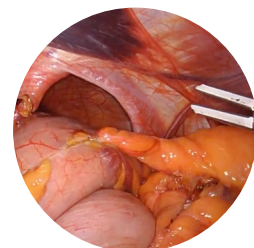
**SPY ENV**  
4K fluorescence displayed in greyscale and green



**SPY Contrast**  
High contrast visualization of 4K fluorescence in black and white



**IRIS**  
Lighted ureteral stents designed to mitigate the risk of ureteral injury



**AutoLight**  
Automatic light adjustment to maintain consistent lighting throughout procedure

## Why use fluorescence?

Blood flow is one of the most important factors in tissue healing. Fluorescence imaging with ICG means seeing beyond the naked eye, allowing the surgeon to visualize tissue perfusion and aim for the best patient outcomes possible. ICG has been proven in over 300 clinical articles to aid in the visualization of blood flow, potentially mitigating the risk of complications caused by poor perfusion. ICG is also utilized to identify biliary anatomy, providing confirmation and confidence in surgical decision making.<sup>1</sup>



Every mode and setting is activated with the touch of a button on the 1688 camera head

SPY Modes	Image capture	Brightness	Hub function
Video capture	Zoom control	Light source	Device Control



With Stryker AutoLight technology, you're never left in the dark. Automatic light adjustment maintains consistent lighting regardless of distance from tissue or subject. The 1688 AIM 4K Platform features enhanced visualization, leading to confident surgical decision making.

<sup>1</sup> Zarrinpar A, Dutson EP, Mobley C, Busuttill RW, Lewis CE, Tillou A, Cheaito A, Hines OJ, Agopian VG, Hiyama DT. Intraoperative Laparoscopic Near-Infrared Fluorescence Cholangiography to Facilitate Anatomical Identification: When to Give Indocyanine Green and How Much. Surgical Innovation. 2016. DOI: 10.1177/1553350616637671.