

# LUCAS<sup>®</sup> 3

chest compression system

**Genuine** accessories



## Your partner in **life support**

The LUCAS chest compression system provides guidelines-consistent, high-quality chest compressions to sudden cardiac arrest patients under difficult conditions and for extended periods of time to give you a greater chance to improve patient outcomes as well as increase team safety and efficiencies.<sup>1,2</sup>

In this catalog you will find the overview of optional power solutions and accessories for LUCAS 3 devices.

If you have any questions about the LUCAS device, accessories or disposables, please contact your Stryker representative.

### **LUCAS 3 chest compression system, version 3.1**

The LUCAS device is shipped with one battery, patient straps, stabilization strap, two disposable suction cups, a carrying case and the Instructions for Use.

The device can connect wirelessly to the LIFENET® System for setup options, post-event report generation and asset management.

**LUCAS 3 device, v3.1, in shipping box**  
99576-000063 English  
99576-000065 International-English, French

## Accessories for LUCAS 3 devices



### LUCAS Carrying Case, Hard Shell

The LUCAS Hard Shell Case with Top Window for quick battery check and Rear Charge Port is the best way to protect your LUCAS device and carry your spare battery and accessories.

11576-000094



### LUCAS Back Plate, Slim

The slim, low profile back plate is easy to deploy, adjust, strap to transportation devices and clean.

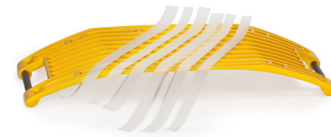
11576-000088



### LUCAS Bumper Integrated Shaft Seal, Black Pair

The black rubber bumper accessory matches the colors of the LUCAS 3 device and is available to protect the hinge end caps.

11576-000091



### Anti-slip Tape, LUCAS Back Plate, Slim

The anti-slip tape is designed to increase the friction of the back plate when in contact with other hard surfaces (e.g., spine boards). Six strips in each pack.

11576-000089

11576-000090 (3-Pack)

## Disposables, batteries and power accessories



### LUCAS Disposable Suction Cup

LUCAS device has a disposable suction cup which can be easily changed after each use.

11576-000046 (3-Pack)

11576-000047 (12-Pack)



### LUCAS Stabilization Strap

The Stabilization strap is used to provide further stabilization relative to the patient and to prevent downward movement of the LUCAS device during operation. Each package includes the neck strap and a pair of support leg straps.

21576-000074

21576-000075 (4-Pack)

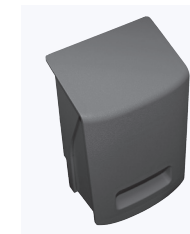


### LUCAS Patient Straps

The LUCAS patient straps are used to secure the patients arms to the support legs of the LUCAS device during transportation.

11576-000050 (Pair)

11576-000051 (Pair, 3-Pack)



### LUCAS Battery

The LUCAS battery is a rechargeable Lithium-ion (Li-Ion) battery which typically last for 45 minutes of operation. You can charge the battery quickly, less than 2 hours in the device if connected to the external power supply or car power cable, and less than 4 hours in the desktop charger.

11576-000080



### LUCAS Battery Desk-Top Charger

The external battery desk-top charger is a stand-alone unit intended to charge one LUCAS Battery. It typically takes less than 4 hours to charge the battery. A mounting bracket is included for space-saving installation.

11576-000060 (U.S., Canada)



### LUCAS Aux Power Supply (S/N 3009 0181 and above)

The external power supply (100-240VAC, 50/60 Hz) can be connected to the LUCAS device and supports prolonged operation as well as charging of the LUCAS Battery while in the device.

11576-000071 (U.S., Canada)



### LUCAS Car Cable

The car cable (12-28V DC) can be connected to the LUCAS device. It supports prolonged operation as well as less than 2 hour charge time of the LUCAS battery while in the device.

11576-000048



### LUCAS PCI Back Plate

The carbon fiber LUCAS PCI back plate is intended specifically for use in the cath lab. It is fully radiotranslucent, with minimum shadows.

11576-000064

# Instructions for Use and training



## LUCAS 3 Instructions for Use (version 3.1)

26500-003923 English (EN)

26500-003926 French (FR)



## LUCAS 3 Instructions for Use (version 3.0)

26500-003716 English (EN)

26500-003719 French (FR)



### LUCAS 3 Training Device

The LUCAS 3 Training Device is a non-clinical device intended for training purposes only. It should only be used on manikins.

LUCAS 3 99576-000083

Comprehensive training resources for LUCAS 3 can be downloaded at [stryker.com/us/en/training-and-education/medical-and-surgical-equipment--/emergency-care/emergency-care.html](https://stryker.com/us/en/training-and-education/medical-and-surgical-equipment--/emergency-care/emergency-care.html)

### References:

1. Rubertsson S, Lindgren E, Smekal D, et al. Mechanical chest compressions and simultaneous defibrillation vs conventional cardiopulmonary resuscitation in out-of-hospital cardiac arrest. The LINC randomized trial. JAMA. 2013;311(1):53-61 2. Beseems S, Madsen Hardig B, Nilsson A, et al. Resuscitation 2015;91:67-72

**For further information, please contact Stryker at 800 442 1142 (U.S.), 800 668 8323 (Canada) or visit our website at [stryker.com](https://stryker.com)**

This document is intended solely for the use of healthcare professionals. A healthcare professional must always rely on his or her own professional clinical judgment when deciding whether to use a particular product when treating a particular patient. Stryker does not dispense medical advice and recommends that healthcare professionals be trained in the use of any particular product before using it.

The information presented is intended to demonstrate Stryker's product offerings. A healthcare professional must always refer to operating instructions for complete directions for use indications, contraindications, warnings, cautions, and potential adverse events, before using any of Stryker's products. Products may not be available in all markets because product availability is subject to the regulatory and/or medical practices in individual markets. Please contact your representative if you have questions about the availability of Stryker's products in your area. Specifications subject to change without notice.

Stryker or its affiliated entities own, use, or have applied for the following trademarks or service marks: LUCAS, Stryker. All other trademarks are trademarks of their respective owners or holders.

The absence of a product, feature, or service name, or logo from this list does not constitute a waiver of Stryker's trademark or other intellectual property rights concerning that name or logo.

EC-GSNPS-PRDC-1179650\_REV-0\_en\_us © 2024 Stryker



### Manufactured by:

Jolife AB  
Scheelevägen 17  
Ideon Science Park  
SE-223 70 Lund  
Sweden

### Distributed by:

Physio-Control, Inc.  
11811 Willows Road NE  
Redmond, WA, 98052 U.S.A.  
Toll free 800 442 1142  
[stryker.com](https://stryker.com)

### Distributed by:

Stryker Canada  
2 Medicorum Place  
Waterdown, Ontario  
L8B 1W2  
Canada  
Toll free 800 668 8323