

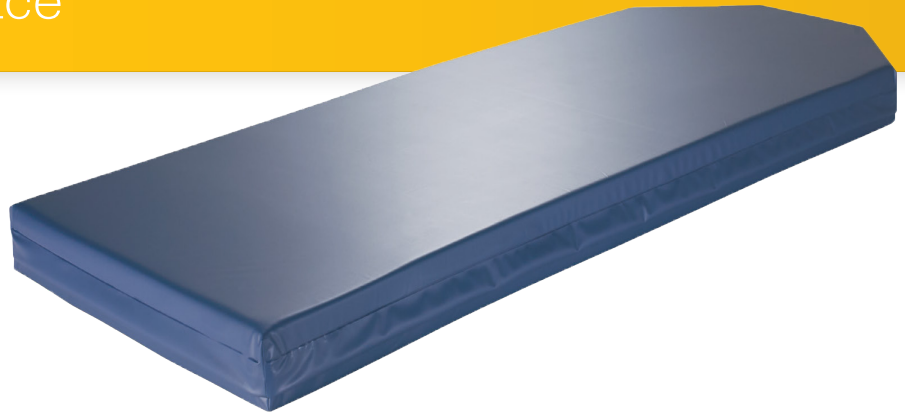
Ultra Comfort SE™

Stretcher Support Surface

The next generation of stretcher support surfaces.

When we developed the SE series of stretcher surfaces, we focused our innovative design on aiding in proactive prevention.

The Ultra Comfort SE Support Surface was designed with the overall patient experience in mind and has specific features to assist in improving outcomes.



TPU cover*
engineered for ease of use and provides increased chemical resistance.

RF welded seams
limit fluid ingress and infiltration.

Three-sided zipper
allows for inspection of the condition of internal components.

X-ray compatible.

Welded seams

Seams are a common problem area for infection. Our covers are sealed with a specific type of electromagnetic bonding utilising RF welding to limit fluid ingress and infiltration.



Durability

The Ultra Comfort SE Support Surface's cover is engineered for ease of use, especially during the maintenance and care process. It is made with a Thermoplastic Polyurethane (TPU) cover* for increased chemical resistance.



Three-sided zipper

Caregivers can fully inspect the condition of internal components of their stretcher surface with the three-sided zipper.



Ultra Comfort SE™

Stretcher Support Surface



Compatible with our stretchers

The UltraComfort SE Support Surface's design and thickness allows for compatibility with Stryker's stretchers.

Standard features

- Thermoplastic polyurethane (TPU) cover
- Welded seams
- Three-sided zipper
- 317.5 kg (700 lb.) weight capacity.
- Compatible with Stryker's stretchers

Optional feature

- Polycarbonate polyurethane (PCPU) cover

Warranty

Stryker Medical, a division of Stryker Corporation ("Stryker") warrants that its Model 1703 and 1704 Ultra Comfort SE Support Surface. Product will be free from defects in material and workmanship. Stryker's warranty covers only the following items during normal use as follows:

- Core assembly: one (1) year
- Fire barrier: one (1) year
- Support surface cover: one (1) year

Specifications

Model	1703-034-301	1704-034-301	1704-034-601
Overall width	76.2 cm (30")	76.2 cm (30")	66.0 cm (26")
Overall length	193.0 cm (76")	193.0 cm (76")	193.0 cm (76")
Thickness	7.6 cm (3")	10.2 cm (4")	10.2 cm (4")
Weight capacity	317.5 kg (700 lb.)	317.5 kg (700 lb.)	317.5 kg (700 lb.)

A healthcare professional must always rely on his or her own professional clinical judgment when deciding whether to use a particular product when treating a particular patient. Stryker does not dispense medical advice and recommends that healthcare professionals be trained in the use of any particular product before using it. The information presented is intended to demonstrate the breadth of Stryker product offerings. A healthcare professional must always refer to the package insert, product label and/or instructions for use before using any Stryker product. Products may not be available in all markets because product availability is subject to the regulatory and/or medical practices in individual markets. Please contact your Stryker representative if you have questions about the availability of Stryker products in your area. Stryker Corporation or its divisions or other corporate affiliated entities own, use or have applied for the following trademarks or service marks: Stryker. All other trademarks are trademarks of their respective owners or holders.

For more information please contact your local sales representative.

Stryker Australia Pty Ltd
8 Herbert Street
St Leonards NSW 2065
61 2 9467 1000
www.stryker.com.au

Stryker New Zealand Limited
PO Box 17-136
Greenlane, Auckland, New Zealand
64 9 573 1890
www.stryker.com