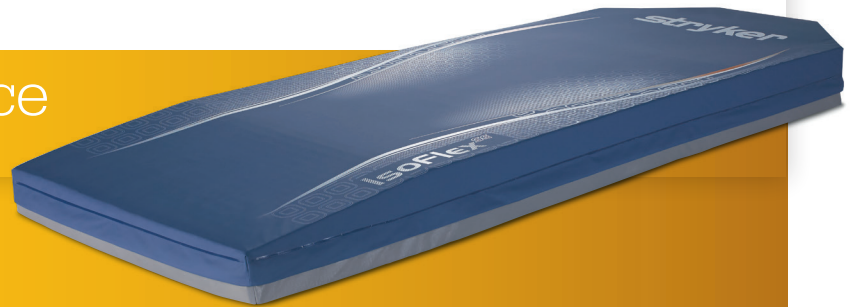




# IsoFlex SE™

## Stretcher Support Surface



IsoFlex SE features are intended to address the key contributors to skin breakdown: **pressure and shear.**

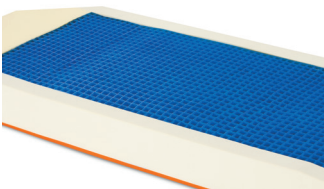
### Transforming the standard of stretcher support surfaces

When we developed the SE series of stretcher surfaces, we focused our innovative design on aiding in proactive prevention.

Stryker's premier surface, IsoFlex SE, has features intended to help address the key risk factors of skin breakdown: pressure and shear. In addition, the surface enhances patient comfort and aids in the treatment and prevention of pressure injuries.

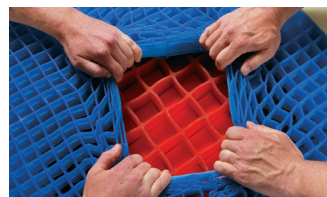
### Key Features

- Aids in the treatment and prevention of pressure injuries<sup>1</sup>
- Combination of ShearGel, CoreGel and foam technology
- Open-column design affords memory, flexibility and durability
- Newly designed cover offers increased chemical resistance
- Sloped heel assists in offloading pressure from patients' heels
- Three-sided zipper enables caregivers to more thoroughly inspect the condition of internal components



#### ShearGel Technology

IsoFlex SE incorporates a layer of ShearGel to address shearing at the point of contact between patient skin and the surface. This gel allows for patient immersion and pressure redistribution.



#### CoreGel Technology

Located in the sacral region, CoreGel creates a positioning pocket to help prevent patient migration.<sup>2</sup> Its design helps absorb and disperse patient weight to aid in pressure redistribution.



#### Welded seams

Knowing surface seams are a common problem area for infection, our covers are sealed with a specific type of RF welding utilizing electromagnetic bonding to limit fluid ingress and infiltration.



#### Slip-resistant bottom

The bottom of IsoFlex SE features a slip-resistant material to help improve infection prevention through the elimination of Velcro while maintaining affixation to the stretcher during patient movement and transfer.



## IsoFlex SE™

### Stretcher Support Surface



#### Standard Features

- ShearGel Technology
- CoreGel Technology
- Polycarbonate polyurethane cover
- Welded seams
- Sloped heel section
- Three-sided zipper
- Slip-resistant bottom

#### Specifications

<b>Model number</b>	1806
<b>Overall width</b>	30" (76 cm)
<b>Overall length</b>	76" (193 cm)
<b>Thickness</b>	5.5" (14 cm)
<b>Weight capacity</b>	700 lb. (317 kg)
<b>Fire retardant inner cover*</b>	Yes

\*Flammability standards: CALTB117; 16CFR1632; CGSB CAN 2-4.2 Method 27.7-M77; BS EN 597-1; BS EN 597-2; CAL TB129; 16CFR1633; BS 6807, Clause 9; BFD IX-11; UNI9175

Stryker reserves the right to change specifications without notice.

#### Warranty

Stryker Medical, a division of Stryker Corporation ("Stryker"), warrants that its Model 1806 IsoFlex SE Support Surface Product will be free from defects in material and workmanship. Stryker's warranty covers only the following items during normal use as follows:

- Internal components: three (3) years
- Fire barrier: one (1) year
- Support surface cover: one (1) year

1. Recommended to be implemented in combination with clinical evaluation of risk factors and skin assessments made by a health care professional.
2. Best when used in combination with a stretcher equipped with LiftAssist Backrest

Stryker Corporation or its divisions or other corporate affiliated entities own, use or have applied for the following trademarks or service marks: **CoreGel, IsoFlex SE, Lift Assist, ShearGel, Stryker**. All other trademarks are trademarks of their respective owners or holder. This product is made with Intelli-Gel® hollow column configuration. "Intelli-Gel®" licensed from EdiZONE, LLC of Alpine, UT.

3800 E. Centre Avenue  
Portage, MI 49002 USA  
t: 269 329 2100  
toll free: 800 327 0770

[www.patienthandling.stryker.com](http://www.patienthandling.stryker.com)

Mkt Lit-1361 18 JUL 2016 Rev B.0  
Copyright © 2016 Stryker  
Printed in U.S.A.