

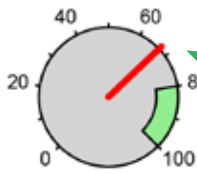
CPR Report



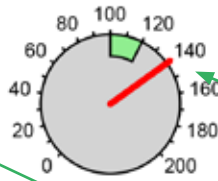
Device Type: LIFEPAK 15
 Power On: 12/14/2013 11:34:04 AM
 CPR Annotations Edited: Yes
 Device Configuration:
 *Times have been adjusted by the system

Duration: 00:28:05
 Incident ID:
 Statistical Parameters: 1000-0300-3000-05

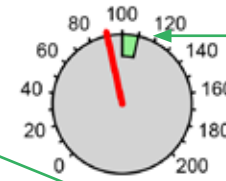
Compressions Ratio (total time)



Compression Rate



Compressions/minute

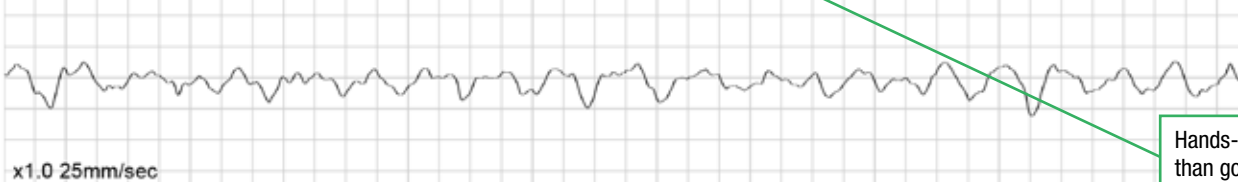


Compressions per minute includes pauses. Target is at least 100/minute.

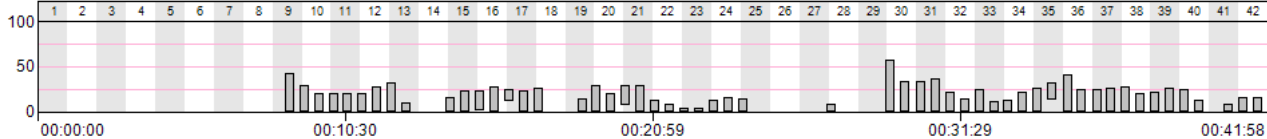
Rate much too fast. Goal is at least 100/min not to exceed 120/min.

Hands-on time much less than goal of 80-100%.

Initial Rhythm



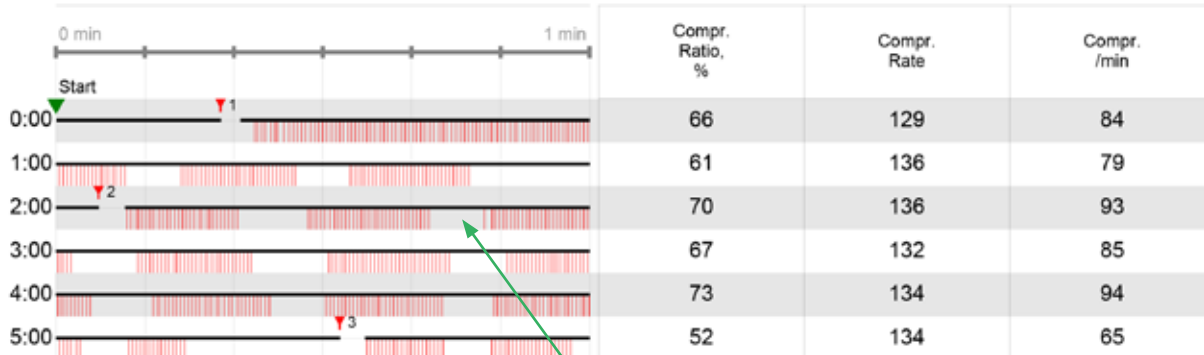
CO2 (mmHg)



- Ventilation
- AED-prompted CPR period
- Shock
- Chest compression
- AED Analysis
- ROSC (user annotated)

CPR QUIK-VIEW

Interval Statistics



The red triangle denotes a shock was given.

Each red line indicates a chest compression. Breaks in the red lines indicate pauses in chest compressions.

CPR Report



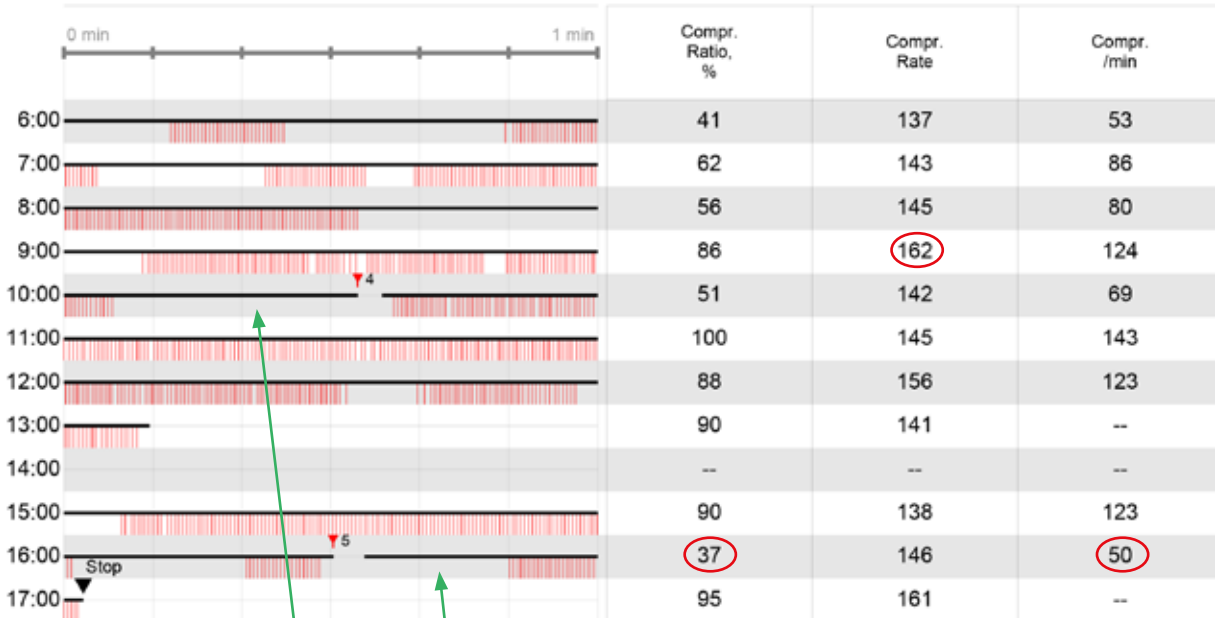
Device Type: LIFEPAK 15
 Power On: 12/14/2013 11:34:04 AM
 CPR Annotations Edited: Yes
 Device Configuration:

Duration: 00:28:05
 Incident ID:
 Statistical Parameters: 1000-0300-3000-05

*Times have been adjusted by the system

CPR QUIK-VIEW

Interval Statistics



Shock	Time	Energy	Pre-shock CPR Pause	Post-shock CPR Pause
1	0:19	200J	--	0:04
2	2:05	300J	0:18	0:03
3	5:32	360J	0:17	0:03
4	10:33	360J	0:28	0:04
5	16:30	360J	0:02	0:20

Long pause before shock.

Long pause after shock.

Here you see how long the pre-shock pauses were, in one case almost 30 seconds of pause before the shock.

For further information, please contact Physio-Control at 800.442.1142 (U.S.), 800.895.5896 (Canada) or visit our website at www.physio-control.com



Physio-Control Headquarters
 11811 Willows Road NE
 Redmond, WA 98052
www.physio-control.com

Customer Support
 P. O. Box 97006
 Redmond, WA 98073
 Toll free 800 442 1142
 Fax 800 426 8049

Physio-Control Canada
 Physio-Control Canada Sales, Ltd.
 7111 Syntex Drive, 3rd Floor
 Mississauga, ON
 L5N 8C3
 Canada
 Toll free 800 895 5896
 Fax 866 430 6115