

Instructions for:

Cleaning, sterilization,
inspection, and maintenance
of non-sterile medical devices

Instructions for Spine products

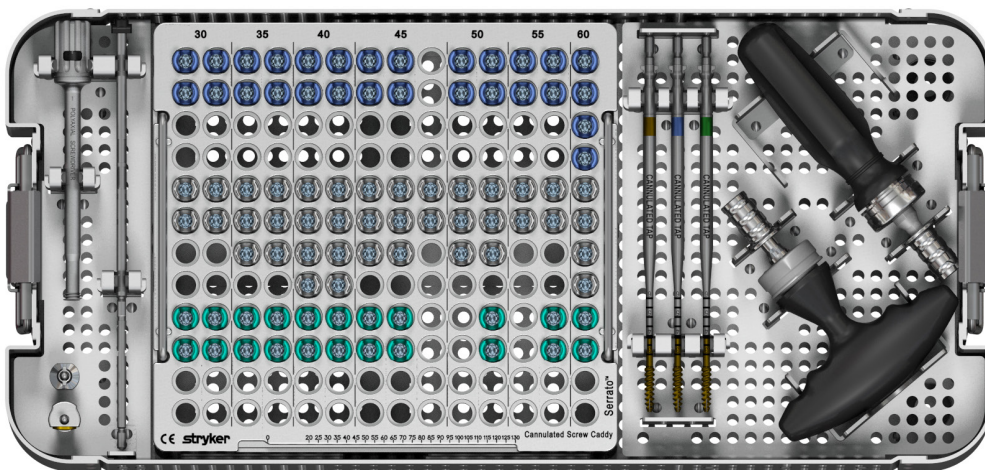


Table of contents

1. Introduction	3
Warning and precautions	4
2. Reprocessing overview	5
3. Preparation for cleaning	6
4. Manual cleaning	7
Pre-cleaning	7
Cleaning	8
5. Automated cleaning	9
6. Inspection	10
7. Packaging	11
8. Sterilization	12
9. Storage before use	13
10. References	14
Appendix 1: Instructions for disassembly for cleaning	15
Appendix 2: Rigid container compatibility for device sets	20
Appendix 3: Rigid container steam sterilization instructions	45
Appendix 4: OUS Parameters for sterilization wrap compatibility for Xia 3 sets	47
Appendix 5: Extended dry time table	48

1. Introduction

This document is intended to provide detailed instructions for processing non-sterile devices manufactured by the Spine division. All non-sterile devices must be cleaned and sterilized to prepare them for use. This document also gives instructions for inspection to determine when an instrument has reached the end of its serviceable life and must be replaced.

This document provides assembly and disassembly instructions for multi-component instruments which must be disassembled prior to cleaning and/or sterilization.

Stryker has validated the processes provided in these instructions to be capable of being effective. Equipment, operators, cleaning agents, and procedures all contribute to the efficacy of the processing. The healthcare facility should ensure that the selected processing steps are safe and effective.

Alternative methods of processing outside the scope of this document may be suitable for reprocessing; however, these must be validated by the end user.

In accordance with ISO 17664, two methods of cleaning the Spine division's non-sterile devices are provided in these instructions, a fully-manual method (Section 4) and a method using an automated washer-disinfector (Section 5). Whenever possible the automated method should be used. The automated cleaning process is more reproducible and, therefore, more reliable. Additionally, staff are less exposed to the contaminated devices and the cleaning agents used.

Whichever method is used, staff should use suitable protective clothing and equipment at all times. In particular, take note of the instructions provided by the cleaning agent manufacturer for correct handling and use of the product.

Warnings and precautions



Single use devices must not be reused, as they are not designed to perform as intended after the initial use, unless they are reprocessed by a reprocessor expressly authorized by Stryker. Only then can it be assured that the device is appropriate for reprocessing and that the correct methods of validation are used. Please refer to the device label to identify single or multiple use devices and components.

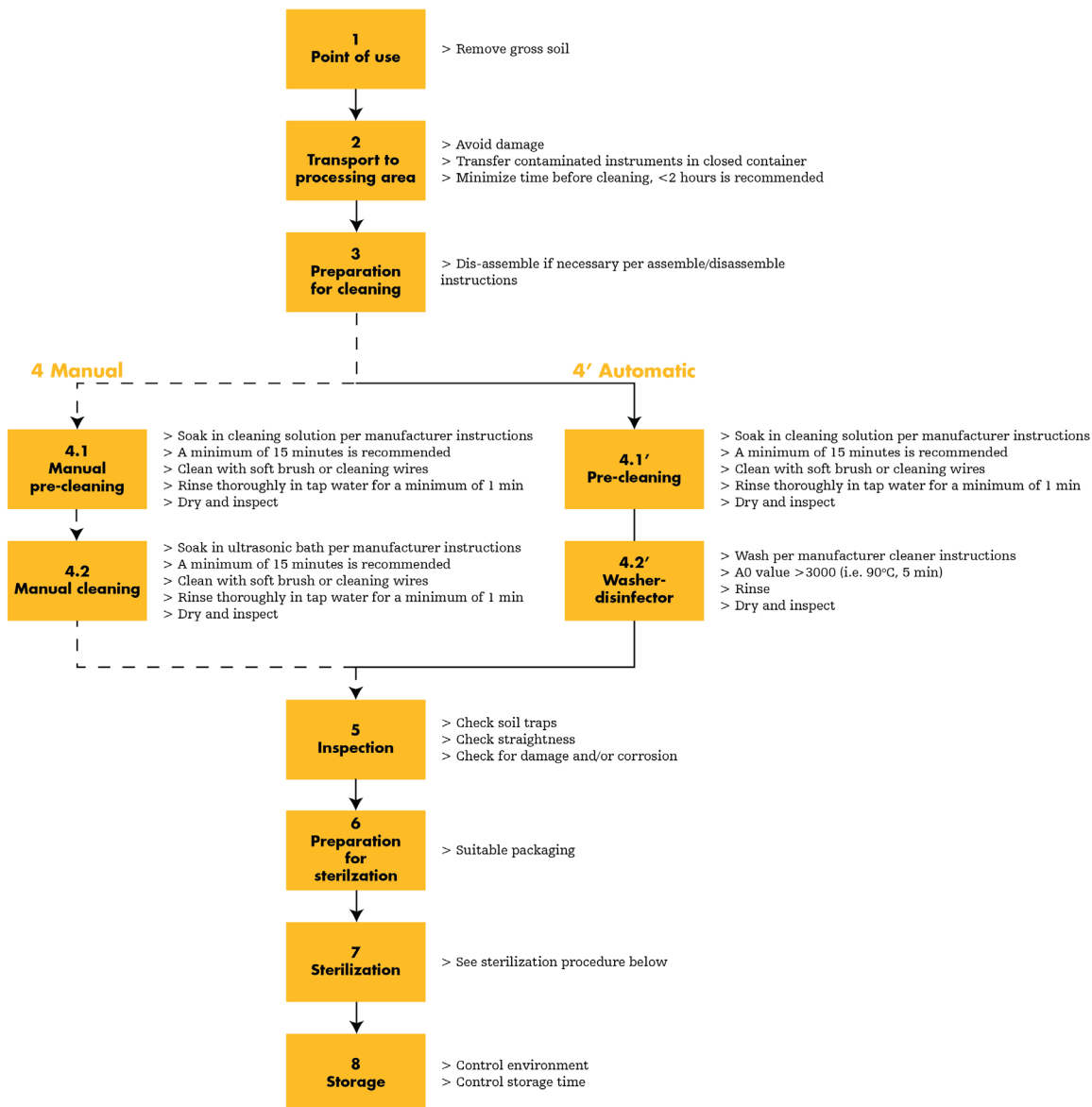
Some device materials may develop changes in mechanical, physical, or chemical characteristics under conditions of repeated use, cleaning and re-sterilization that may compromise the integrity of the design and/or material leading to diminished safety, performance, and/or compliance with relevant specifications.

The Spine division's non-sterile devices are not normally used in surgical procedures where they contact TSE infective tissue (Transmissible Spongiform Encephalopathies) as defined by the World Health Organization (WHO). Therefore decontamination procedures with highly aggressive agents [i.e. sodium hydroxide (NaOH) or sodium hypochloride (NaClO)] are not necessary and, for normal processing, are not recommended because material degradation may occur. The sterilization parameters recommended in this document are not intended and not suitable for inactivation of prions.

2. Reprocessing overview

The sequence of steps required to prepare non-sterile instruments for use are summarized in the chart below. More detailed instructions for each step are given on the following pages.

Note: Cleaning and sterilization is required for initial use of devices.



Note:

The quality of the water used for diluting cleaning agents and/or disinfectants and for rinsing non-sterile instruments should be carefully considered.

Application of freshly prepared purified water/highly purified water or sterile water for rinsing purposes with less than 100 CFU/ml and 0.5 EU/ml is highly recommended.

Mineral residues from hard water, as well as higher contamination with microorganisms and endotoxins, can result in staining of the device or prevent effective cleaning and sterilization.

3. Preparation for cleaning

(Point-of-use for all instruments)

Point of use

After use (within a maximum of 2 hours post-operatively) remove gross soil using absorbent paper wipes. Intensive rinsing of the reusable device with fluent water or transfer of the medical devices into a bath with an aldehyde-free disinfectant solution is highly recommended.

Transport to processing area

Avoid mechanical damage by ensuring that heavy devices do not get mixed with delicate ones. Pay particular attention to sharp edges, both to avoid personal injury and prevent damage to the reusable devices. Transport the reusable devices to the point where cleaning is to be performed as soon as practical. If transfer to the processing area is likely to be delayed, consider covering the instruments with a damp cloth to avoid drying of soil.

Preparation for cleaning

Appendix 1 provides specific instructions for instruments that requires disassembly prior to cleaning.

Caution:

Stryker's trays and cases are intended for transport and storage of re-usable instruments. They are not designed for cleaning and/or disinfection in the fully assembled state.

The instruments must be removed from the tray for adequate cleaning results.

4. Manual cleaning

Pre-cleaning

Remove gross soil using wipes and solution of cleaning agent.

Immerse non-sterile device in solution of cleaning agent.

Ensure that all surfaces are thoroughly wetted. Use a syringe or pipette to ensure that the cleaning solution reaches all parts of cannulations.

Ensure that air is not trapped within features of the device when immersing in the solution.

Soak for minimum of 15 minutes.

Using suitable soft and/or firm bristle brushes, clean the non-sterile device thoroughly, paying particular attention to rough surfaces, threaded areas, and features where soil may be impacted or shielded from the cleaning process.

Use a bottle brush of appropriate diameter and length for cannulations.

Ensure that the brush passes the whole length of each cannulation.

Operate articulating devices and those with moving parts.

Rinse in running water until all traces of cleaning solution are removed.

Pay particular attention to cannulations and blind holes, as well as hinges and joints, between mating parts.

Visually inspect for any remaining soil and repeat the steps above if necessary.

Allow to drain on absorbent paper or transfer immediately to cleaning step.

Caution:

Never use metal brushes or steel wool for cleaning.

4. Manual cleaning

Cleaning

Equipment required:

- Ultrasonic bath large enough to allow complete immersion of the device. A frequency of 25 – 50 kHz is recommended. Do not exceed the temperature range stated by the detergent manufacturer.
- Cleaning agent intended for manual cleaning and suitable for ultrasonic treatment. Do not exceed the concentration specified by the detergent manufacturer.
- Suitable brushes or cleaning wires to reach all parts of the device.
Caution: Never use metal brushes or steel wool for cleaning.
- Syringes (volumes 1 to 50 mL, depending on the size of the channels to be rinsed)
- Fresh purified water, highly purified water, or sterile water for rinsing purposes.

Instructions:

Prepare an ultrasonic bath with a cleaning solution at the concentration and temperature specified by the detergent manufacturer.

Immerse the device completely and activate the bath for minimum of 15 minutes.

Using suitable brushes or cleaning wires, clean the device paying particular attention to rough surfaces, threaded areas, and features that may be shielded from the brushing action.

Rinse for at least 1 minute in running water until all traces of cleaning solution are removed. Pay particular attention to cannulations, blind holes, hinges, and joints between mating parts.

If, after completion of the cleaning step in the ultrasonic bath, encrusted soil remains on the device, the cleaning step must be repeated as described above.

Note:

The guidance provided by the cleaning agent manufacturer concerning concentrations and temperatures should be followed. If these concentrations and temperatures are exceeded significantly, discoloration or corrosion could occur with some materials. This could also happen if rinsing after cleaning and/or disinfecting is insufficient.

For cleaning non-sterile devices, only specifically formulated cleaning agents should be used.

As not all cleaning agents may be available around the globe, Stryker does not recommend any specific cleaning agent. The end user should verify the selected cleaning agent is appropriate for use on surgical devices designed for reprocessing.

5. Automated cleaning and disinfection

Equipment required:

- Washer-disinfector with demonstrated efficiency (e.g. CE mark or FDA clearance and validated in accordance to ISO 15883), properly installed, qualified, and regularly subjected to maintenance and testing.
- Approved thermal rinse/disinfection program (application of at least 5 minutes at 90°C).
- Cleaning agent intended for use in washer-disinfector. Do not exceed the concentration and temperature recommended by the detergent manufacturer.

Instructions:

Load the devices into the washer-disinfector per required loading configuration.

Connect cannulations to the rinsing ports of the washer-disinfector. If no direct connection is possible, locate the cannulations directly on injector jets or in injector sleeves of the injector basket.

Avoid contact between devices as movement during washing could cause damage, and washing action could be obstructed.

Arrange devices so that cannulations are not horizontal, and blind holes incline downwards to assist with cleaning and drainage.

Articulating devices should be in the open position.

Operate the washer-disinfector cycle.

Upon completion, unload the washer-disinfector. Visually inspect each device for remaining soil and dryness. If soil remains, repeat the cleaning process.

Remaining wetness may be removed with filtered, compressed air or clean, lint-free wipes.

If additional drying is required, arrange instruments in a clean area or heat in an oven below 110°C.

Caution:

Chemical disinfection programs are not recommended due to the potential for chemical residues to remain on the instruments. These residues could interfere with sterilization efficacy.

Caution:

The parameters identified in this document are the minimum for effective cleaning and sterilization of our instruments. Use of high pH cleaning solutions will reduce the life of instruments. Stryker recommends using a pH neutralizer to limit damage to instruments, as exposure to high pH is known to strip protective coatings from metals, especially aluminum.

6. Inspection

Before preparing for sterilization, all devices should be inspected.

Generally un-magnified visual inspection under good light conditions is sufficient.

All parts of the devices should be checked for visible soil and/or corrosion.

Particular attention should be paid to:

- Soil “traps” such as mating surfaces, hinges, threaded areas, and flexible shafts.
- Recessed features (holes, cannulations, and textured surfaces).
- Features where soil may be impacted into the device, such as taps, drills, rongeurs.
- Cutting edges should be checked for sharpness and damage.

Mating devices should be checked for proper assembly. Instruments with moving parts should be operated to check correct operation; application of medical grade lubricants that are biocompatible per ISO 10993 may be necessary.

“Flexible” instruments should be checked for damage to the spiral element.

Note:

The life of the instrument depends on the number of times they are used as well as the precautions taken in handling, cleaning, and storage. Great care must be taken of the instruments to ensure that they remain in good working order.

Instruments should be examined for wear or damage by physicians and staff in operating centers prior to surgery.

The examination shall include a visual and functional inspection of the working surfaces, articulation points, rotating features, hinges, springs, connection mechanisms, mating parts, cutting features, threads, and working tip of all instruments.

7. Packaging

Preparation for sterilization

Commercially available sterilization wrap:

Stryker's tray configurations should be double wrapped according to AAMI/CSR technique.

The packaging for terminally sterilized devices should be suitable for steam sterilization and the appropriate grade for the weight of the devices. Additionally, the wrap should be compliant to the following requirements:

- AAMI ST79
- ISO 11607
- CE mark
- FDA 510(k) clearance for specified sterilization parameters

Rigid container:

Stryker has validated steam sterilization of complete device trays with Aesculap SterilContainer System.

For a complete list of rigid container compatibility details, reference Appendix 2.

For all sterilization packaging configurations, Stryker recommends the use of biological indicators as described in ISO 11138-3 (*Geobacillus stearothermophilus*) and/or chemical indicators as described in ISO 11140 for proper monitoring of all sterilization cycles.

Caution:

Stryker has only validated the specific lid/case combinations listed to the parameters listed in Section 8. While other combinations and parameters may be appropriate, the responsibility for validation and evaluation would be on the end-user.

Warning:

The use of lid/ case/tray combinations in a rigid container system that has not been properly validated in accordance with ISO 17665 may result in the inability to meet the required sterility assurance level (SAL) of 10^{-6} .

Note: Instruments *may* be individually wrapped and sterilized.

Specialty devices must be individually wrapped and sterilized.

8. Sterilization

The sterilization parameters shown at the right are validated at minimum time and temperature in accordance with ANSI/AAMI ST79 and EN ISO 17665. Steam autoclave (moist heat) sterilization using a pre-vacuum (forced air removal) cycle is recommended. Autoclaves should comply with the requirements of, and be validated and maintained in accordance with, EN 285, EN 13060, EN ISO 17665, and ANSI/ AAMI ST79.

Stryker has validated the recommended sterilization cycle for complete non-sterile device cases/ trays.

Compatibility with rigid container systems is provided in Appendix 2. Rigid Container Steam Sterilization Instructions for outside USA are provided in Appendix 3.

Caution:

These parameters may differ in the instructions for use for some of our systems. However, both parameters have been validated.

- **Exceptions:** Stryker's AVS ARIA System and AVS AL PEEK Spacer System **must not** be sterilized using reusable, rigid sterilization containers. These systems shall be sterilized according to the **Steam Sterilization with FDA-Cleared/Commercially Available Sterilization Wrap Instructions**

USA

Method	Moist heat sterilization according to ANSI/AAMI ST79 and EN ISO 17665
Cycle	Pre-vacuum (dynamic air removal)
Temperature	132°C (270°F)
Exposure time ¹	4 minutes
Drying time ²	45 minutes (minimum, in chamber)

Outside USA

Method	Moist heat sterilization according to EN ISO 17665
Cycle	Pre-vacuum (dynamic air removal)
Temperature	134°C (273°F)
Exposure time ¹	3 minutes (minimum)
Drying time ²	45 minutes (minimum, in chamber)

Caution:

Stryker does not recommend the use of 'flash' sterilization for non-sterile devices.

Caution:

Longer cycles, such as those recommended for control or elimination of Transmissible Spongiform Encephalopathies, may be utilized; however, instruments should be expected to have reduced functional life.

Warning:

Implants and instruments which are supplied sterile must not be re-sterilized as this process has not been validated.

¹ Exposure time:
Period for which the load and entire chamber is maintained at the sterilization temperature.

² Drying time:
Period during which steam is removed from the chamber and the chamber pressure is reduced to permit the evaporation of condensate from the load either by prolonged evacuation or by the injection and extraction of hot air or other gases. The drying time varies due to load configuration, wrapping method, and material. Therefore, dry time may be repeated if moisture is present on the wrap and/or instruments.

9. Storage before use

After sterilization, devices should be stored in the sterilization wrap or rigid container in a dry and dust-free place. The shelf life is dependent on the sterile barrier employed, storage manner, environmental conditions, and handling.

A maximum shelf life for sterilized devices should be defined by each health care facility based on the recommendations of the wrap or container manufacturer.

10. References

1. AAMI TIR 12: Design, testing, and labeling reusable medical devices for reprocessing in healthcare facilities: a guide for medical device manufacturers
2. AAMI TIR 30: A compendium of processes, materials, test methods, and acceptance criteria for cleaning reusable medical devices
3. ANSI/AAMI ST 77: Containment devices for reusable medical device sterilization
4. ANSI/AAMI ST 79: Comprehensive guide to steam sterilization and sterility assurance in healthcare facilities
5. EN 285: Sterilization — Steam sterilizers — large sterilizers
6. EN 13060: Small steam sterilizers
7. ISO 11607-1: Packaging for terminally sterilized medical; devices — Part 1: Requirements for materials, sterile barrier systems, and packaging systems
8. ISO 15883-1: Washer-disinfectors — Part 1: General requirements, terms and definitions, and tests
9. ISO 17664: Processing of health care products — Information to be provided by the medical device manufacturer for the processing of medical devices
10. ISO 17665-1: Sterilization of healthcare products, moist heat — Part 1: Requirements for the development, validation, and routine control of a sterilization process for medical devices
11. ISO 17665-2: Sterilization of health care products, moist heat — Part 2: Guidance on the application of ISO 17665-1

Appendix 1:

Instructions for disassembly for cleaning

Part number	Instrument name	Surgical system	Steps	Instructions
48805090	Quick Turn Screwdriver	Anterior Cervical Plate System (ACP)	1	Unthread inner shaft and remove

Part number	Instrument name	Surgical system	Steps	Instructions
48921011 48921013 48921015 48921017 48921019 48921100	Guide Assembly (11mm, 13mm, 15mm, 17mm, 19mm) Inserter Guide Inner Shaft	Aero-AL	1	Pull inner shaft from the main body of the device
48921005 48921050	Revision Guide Revision Guide Inner Shaft			

Part number	Instrument name	Surgical system	Steps	Instructions
49177240	Rescue Screwdriver	LITe Plate System	1	Unthread draw rod from outer shaft and remove

Appendix 1:

Instructions for disassembly for cleaning

Part number	Instrument name	Surgical system	Steps	Instructions
48280178 48280179 48280180 48280181 48280182 48280183	Ratchet Knob Adjustable Arm Distraction Shaft 2 Level Rack 4 Level Rack Fixed Arm	ES2	1	Put the latch on the compression/distraction mechanism in the unlock position
			2	Slide the Adjustable Arm off of the rack
			3	Remove the Ratchet Knob from the compression/distraction mechanism by firmly pulling on the knob straight back and away from the instrument
			4	Press the lever on the Fixed Arm into the "unlock" position and slide the Fixed arm off of the rack. Note: The outer sleeve of the arms should be in the locked, neutral position for cleaning.
			5	Pull out Distraction Knob

Part number	Instrument name	Surgical system	Steps	Instructions
48280310	Polyaxial Screwdriver	ES2	1	Release the quick connect handle from the Screwdriver shaft Adapter
			2	Remove the Screwdriver Adapter by pressing the "unlock" button on the Locking Nut
			3	Remove the inner sleeve by sliding it through the bottom of the outer shaft

Part number	Instrument name	Surgical system	Steps	Instructions
48562018	Polyaxial Screwdriver with optional outer sleeve	Oasys	1	Press button on optional outer sleeve (tissue sleeve)
			2	Slide outer sleeve off of shaft

Appendix 1:

Instructions for disassembly for cleaning

Part number	Instrument name	Surgical system	Steps	Instructions
482397004	Low Profile Screwdriver	Xia Elegance	1	Release the quick connect handle from the Screwdriver shaft Adapter
			2	Remove the Screwdriver Adapter by pressing the "unlock" button on the Locking Nut
			3	Remove the inner sleeve by sliding it through the bottom of the outer shaft

Part number	Instrument name	Surgical system	Steps	Instructions
48261330 48261330S	Polyaxial Screwdriver, Polyaxial Screwdriver, Short	Xia 3 - Serrato	1	Slide the Screwdriver Connect Adaptor off of the main shaft
			2	Press button to slide off the locking nut
			3	Press outer sleeve button to slide outer sleeve off of shaft

Part number	Instrument name	Surgical system	Steps	Instructions
48235001	Lateral Persuader	Xia 3	1	Unthread the threaded shaft and completely pull out the center tube from the lateral persuader

Appendix 1:

Instructions for disassembly for cleaning

Part number	Instrument name	Surgical system	Steps	Instructions
48231330 482391330S 482391330L 48231320 482391320S 482391320L	Polyaxial Screwdriver	Xia (3 and Elegance)	1	Release the quick connect handle from the quick connect mechanism
	Polyaxial Short Screwdriver		2	Slide the Screwdriver Connect Adaptor off of the main shaft
	Polyaxial Long Screwdriver		3	Slide outer sleeve off of shaft
	Monoaxial Standard Screwdriver			
	Monoaxial Short Screwdriver			
	Monoaxial Long Screwdriver			

Part number	Instrument name	Surgical system	Steps	Instructions
482331330	Uniplanar Screwdriver Reduction	Xia 3	1	Release the quick connect handle from the quick connect mechanism
			2	Slide the Screwdriver Connect Adaptor off of the main shaft
			3	Slide outer sleeve off of shaft

Part number	Instrument name	Surgical system	Steps	Instructions
48856006 48138012 48138013	Cannulated Screwdriver Shaft Screwdriver Outer Sleeve Screwdriver Locking Nut	Xia 4.5 Xia CT	1	Release the quick connect handle from the quick connect mechanism
			2	Slide the locking nut off of the main shaft
			3	Slide outer sleeve off of shaft

Appendix 1:

Instructions for disassembly for cleaning

Part number	Instrument name	Surgical system	Steps	Instructions
48930000 48930005 48930013	Tritanium TL Steerable Inserter Tritanium TL Steerable Inserter Inner Shaft TL Steerable Inserter Driver	Tritanium TL	1	Turn the TL Steerable Inserter rotating tip into the straight position and press the release button. The TL Steerable Inserter Inner Shaft will slide out. <i>If there is difficulty removing the inner shaft proceed with steps 2 and 3.</i>
			2	Use the inserter driver to push the side button and release the inner shaft. Turn the inserter upside down and the inner shaft will slide out.
			3	If the inner shaft does not immediately slide out when the side button is pressed, spin the back (proximal) locking knob at the same time as pressing the side button.
			4	If difficulty is still encountered, use both drivers in the set. Thread one of the drivers into the back (proximal) end of the inner shaft to pull the shaft out and simultaneously use the second inserter driver to press the side button.

Part number	Instrument name	Surgical system	Steps	Instructions
580220100 580220101 680220102 680220100 680220104 680220109 680220108	Tritanium X TL Inserter (fully assembled with the following accessories) TL Inserter Draw rod Syringe Plunger Tube Set Pressure gauge Draw rod knob Pressure gauge knob (not assembled but needed for disassembly)	Tritanium X	1	Remove draw rod knob (if necessary)
			2	Unlock black rotation wings (if necessary). Rotate distal tip of device to straight and remove draw rod.
			3	Pinch pawls of inserter and pull out syringe plunger (rotate the plunger counter clockwise if necessary)
			4	Remove o-ring from syringe plunger (discard if damaged)
			5	Use pressure gauge knob to rotate pressure gauge counter clockwise until it loosens and can be pulled out
			6	Remove o-ring from pressure gauge and discard
			7	Remove tube set from inserter and discard

Appendix 2:

Rigid container compatibility for device sets

Stryker has validated steam sterilization of complete, fully loaded non-sterile device trays with Aesculap's SterilContainer System. Other rigid container systems may be suitable for use, but must be evaluated by the end-user.

Refer to Aesculap Instructions for Use for Care & Handling of Aesculap SterilContainer Systems.

- **Exceptions:** Stryker's AVS ARIA System and AVS AL PEEK Spacer System **must not** be sterilized using reusable, rigid sterilization containers. These systems shall be sterilized according to the **Steam Sterilization with FDA-Cleared/Commercially Available Sterilization Wrap Instructions**

Brand name	
Aero-AL	Instrument Tray 1: 4892200 Instrument Tray 2: 4822001
Aero-C	Instrument Container: 48890000
Aero-LL	Instrument Container: 48940000
ES2 Augmentable	Alignment Guide: 48491301 Hex Handle: 48491302 Monoaxial ScrewDriver Inner Shaft: 48491304 Monoaxial Screwdriver: 48491303
IBD PEEK C	Instrument Container: 48808200A
LITe	LLIF Implant Container: 49179000 ALIF Implant Container: 49179100 Buttress Plate Container: 49179102 Plating Instrument Container: 49179200
Tritanium C	Instrument Container: 48980001
UniVise	Instrument Container: 48590000
Anterior Cervical Plate System (ACP)	Instrument Container: 48805200
Tritanium TL	Instrument Container: 48930001 Posterior Trials Instrument Container: 48930002
Navigation Enabled Instruments	Navigation Enabled XIA and ES2 Instruments: 48706501 Navigation Enabled Serrato Instruments: 48706502
Tritanium X	Posterior TLIF Disc Prep 1 Instruments: 680220002 Posterior TLIF Disc Prep 2 Instruments: 680220003

Appendix 2:

Rigid container compatibility for device sets

Instrument Ref #	Instrument Description
03807200	Standard Handle
33660101	Notched Rod
33660700	Small Cage Inserter
48040012	XIA S/S- RBH Container
48040013	XIA Ti Reduced Blade HOOK TRAY
480401540	4.0 mm Modular Tap
48040150	5.0 mm Modular Tap
48041312	Xia Improved Screwdriver
48041313	Xia Improved Screwdriver Shaft
48510000	Implant Container
48510001	Instrument Container
48510005	Container -Reflex Hybrid ACP
48510100	Caliper
48510200	Plate Bender
48510300	Plate Holder
48510400	Fixation Pin Inserter
48510410	Temporary Fixation Pin, Standard
48510420	Temporary Fixation Pin, Long
48510500	Single-Barrel Drill Guide - Fixed
48510505	Single-Barrel Drill Guide - Variable
48510510	Double-Barrel Drill Guide- Fixed
48510515	Double-Barrel Drill Guide- Variable
48510520	All-In-One Guide - Fixed
48510525	All-In-One Guide - Variable
48501614	Hybrid 14MM ALL IN ONE DRILL BIT
48510600	Quick-Release Handle
48510610	Drill- 10 mm
48510612	Drill- 12 mm
48510614	Drill -14 mm
48510616	Drill- 16 mm
48510618	Drill - 18 mm
48510620	Drill - 20 mm
48510650	Awl
48510655	HYBRID AWL
48510700	Tap
48510800	Screwdriver
48510810	Final -Tightening Screwdriver
48510900	Rescue Screwdriver
48510910	Revision Screwdriver
48511500	Single Barrel Drill Guide-Fixed - Reflex Hybrid ACP
48511505	Single-Barrel Drill - Guide - Variable - Reflex Hybrid ACP
48511510	Double- Barrel Drill - Guide - Fixed - Reflex Hybrid ACP
48511515	Double-Barrel Drill - Guide - Variable - Reflex Hybrid ACP
48511655	Punch Awl Shaft - Reflex Hybrid ACP
48511655V	Variable Awl Sleeve - Reflex Hybrid ACP

Instrument Ref #	Instrument Description
48511655F	Fixed Awl Sleeve - Reflex Hybrid ACP
48511805	Retaining Screwdriver Assembly - Reflex Hybrid ACP
48511805A	Retaining Screwdriver Sleeve
48511905	Screw Extractor - Reflex Hybrid ACP
48511905B	Screw Extractor Inner Shaft - Reflex Hybrid ACP
48511905R	Reflex Hybrid Screw Extractor Inner Shaft
4851500	DynaTran Container
48515019	DynaTran Plate Compressor
48515020	DynaTran Temporary Pins
48515021	DynaTran Distraction Pins
48513010	DynaTran Plate Holder
48515017B	DynaTran Plate Clip
48560010	Awl
48560012	Quick Release Handle
48560015	Probe/Depth Gauge
48560017	Rod Template
48560018	Rod/Plate Cutter
48560019	Rod/Plate Bender
48560020	Rod Forceps
48560021	Screwhead Adjuster
48560022	Right In-Situ Bender
48560023	Left In-Situ Bender
48560027	Inserter Tube/Anti-Torque Set
48560028	Torque Wrench
48560029	Connector Clip Inserter
48560030	Plate Template
48560032	Hook Preparer
48560033	Hook Forceps
48560129	Connector Clip Remover
48561001	Container 1, Polyaxial Screws
48561002	Container 2, Implants & Screw Prep
48561003	Container 3, General Instruments
48561001A	Cancellous Screw Caddy
48561001B	Non-Biased Angle Screw Caddy
48561001C	Cancellous Screw Caddy Box
48561001D	Non-Biased Angle Screw Caddy Box
48561915	4.5mm Tap Sleeve
48561916	3.5mm Cancellous Tap
48561917	4.0mm Cancellous Tap
48560514	4.5mm Tap
48562016	Screw Driver
48561011	Adjustable Drill Guide
48561024	Persuader, Locking
48560024	Persuader
48561071	Bender, Connector Plate

Appendix 2:

Rigid container compatibility for device sets

Instrument Ref #	Instrument Description
48561073	Locking Nut Socket
48905021	Pedicular Screwdriver Shaft
48905110	Spondy Reduction Instrument
48905111	Threaded Rigid Ext. Scr. Post
48905112	Connector Pusher Sleeve
48905113	Reduction Key
03-20-0101	FIXED ANGLE SCREW GUIDE/H
03-20-0102	FIXED ANGLE SCREW GUIDE-C
03-20-0103	VARIABLE ANGLE SCREW GUID
03-20-0104	VARIABLE ANGLE SCREW GUID
03-20-0203	DRILL QUICK RELEASE HANDL
03-20-0204	FIXED DRILL QUICK RELEASE
03-20-0205	VARIABLE DRILL QUICK RELE
03-20-0206	Tether Fixed Self-Ctr Dri
03-20-0207	Tether Fixed Self-Ctr Dri
03-20-0208	Tether Var Self-Ctr Drill
03-20-0209	Tether Var Self-Ctr Drill
03-20-0301	TAP 13mm PRESET DEPTH
03-20-0401	FIX ANGL SCRDR; order w/ 0403
03-20-0402	VAR ANGL SCRDR; order w/ 0403
03-20-0403	SCREW DRIVER DRAW ROD
03-20-0404	FINAL TIGHTENING SCREW DR
03-20-0405	EMERGENCY SCREW EXTRACTOR
03-20-0406	SCREW EXTRACTOR DRAW ROD
03-20-0407	Fixed Angle Retaining Scr
03-20-0408	VARIABLE ANGLE RETAINING
03-20-0409	Fixed Angle Retaining Scr
03-20-0410	VAR SOLID RETAINING SCREWDVR
03-20-0505	PLATE HOLDING PIN DRIVER
03-20-0506	PLATE HOLDING FIXATION PIN
03-20-0507	SYSTEM DELIVERY CASE
03-20-0508	SCREW GAUGE
03-20-0510	THEKEN SELF-CENTERING AWL
03-20-0512	SCREW GAUGE
03-20-0516	VARIABLE SELF-CENTERING A
03-20-0517	PLATE BENDER
03710620	XIA TI ROD TEMPLATE
03807001	XIA TI AWL
03807002	XIA TI PROBE FINDER
03807003	XIA TI PROBE and FEELER
03807004	XIA TI XIA TAP 4.5 / 5.5
03807005	XIA TI TAP 6.5/ 7.5
03807006	XIA TI POLYAXIAL SCREWDRIVER
03807007	XIA TI MONOAXIAL SCREWDRIVER
03807008	Variable Awl Sleeve - Reflex Hybrid ACP

Instrument Ref #	Instrument Description
03807009	XIA TI INSERTER
03807010	XIA TI FRENCH BENDER
03807011	XIA TI XIA BENDING IRON
03807014	XIA SPREADER
03807016	XIA TI PERSUADER
03807017	XIA TI ORIENTATION CLIP
03807018	XIA TI ROD FORK
03807019	XIA TI ROD PUSHER
03807020	XIA TI HOOK FORCEPS
03807021	XIA TI LAMINA HOOK PREPARER
03807024	XIA TI BLUNT PROBE
03807025	XIA TI PEDICLE HOOK PREPARER
03807026	XIA TI ANTTORQUE KEY
03807027	XIA TI HOOK HOLDER
03807028	XIA TI TORQUE WRENCH
03807029	XIA TI HOOK IMPACTOR
03807030	XIA Std Round Handle
03807031	XIA TI POLYDRIVER
03807032	XIA TI MONODRIVER
03807033	XIA ROD ROTATION FORCEPS
03807035	Blunt Probe
03807036	XIA 7.5/7.5 TAP
03807050	IMPLANT TRAY
03807051	XIA TI INSTRUMENT TRAY 1
03807052	XIA TI INSTRUMENT TRAY 2
03808400	XIA TI TABLETOP ROD CUTTER
03808401	XIA TI TABLETOP ROD CUTTER BOX
101661	SDI-NUCLEOTOME CONSOLE SP - SDI Instrument
116007	SR90D Bone Probe
116010	SR90D Flexible Sound
1400031	SR90D MultAngle ScrwAlign Blck
1410211	SR90D Under Rod Distractor
1410220	SR90D Kee Compressor
1410228	SR90D Guide Pin
1410414	SR90D Transverse ProcessFinder
1410415	SR90D Lamina Finder
1410416	SR90D Short Jaw Rod Holder
282006	S & N SCREW INSERTER - SDI Instrument
282007	SR90D 3.5MM Standard Hex Shaft
282009	SR90D Rod Gripper
282010	SR90D Rod Bender
282012	SR90D InSitu Bender Right Side
282013	SR90D InSitu Bender Left Side
282016	SR90D ROD PUSHER
282029	S & N RATCHING CAP REMV/I - SDI Instrument

Appendix 2:

Rigid container compatibility for device sets

Instrument Ref #	Instrument Description
282051	SR90D Rhom CrossConnect Driver
282052	SR90D Cross Connector Closer
33660002	IMPLANT BOX- VBOSS
33660002A	IMPLANTS BOX LID- VBOSS
33660003	INSTRUMENT BOX-VBOSS
33660003A	INSTRUMENT BOX LID - VBOSS
33660050	CALIPER-VBOSS
33660100	CAGE CUTTER-VBOSS
33660111	Cutting Blade Shaft-VBOSS
33660112	Cutting Blade-VBOSS
33660212	MANDREL 12-VBOSS
33660214	MANDREL 14-VBOSS
33660216	MANDREL 16-VBOSS
33660220	MANDREL 20-VBOSS
33660225	MANDREL 25-VBOSS
33660250	CAGE DEBURRING TOOL-VBOSS
33660300	PARALLEL DISTRACTOR-VBOSS
33660310	ENDPLATE TIP SMALL-VBOSS
33660320	ENDPLATE TIP MEDIUM-VBOSS
33660330	ENDPLATE TIP LARGE-VBOSS
33660340	ENDPLATE TIP FINGER-VBOSS
33660350	ENDPLATE TIP FINGER-VBOSS
33660400	RATCHETING HANDLE-VBOSS
33660412	PIN 12-VBOSS
33660414	PIN 14-VBOSS
33660416	PIN 16-VBOSS
33660420	PIN 20-VBOSS
33660425	PIN 25-VBOSS
33660450	SMALL GRAFT IMPACTOR-VBOSS
33660460	GRAFT IMPACTOR-VBOSS
33660500	STANDARD CAGE INSERTER-VBOSS
33660600	CAGE IMPACTOR-VBOSS
33660650	BASE ENDCAP IMPACTORS-VBOSS
33660652	ENDCAP IMPACTOR ANGLE 5 DEG-VBOSS
33660700	SMALL CAGE INSERTER-VBOSS
33660800	RATCHETING HANDLE
33660850	ENDCAP REMOVER
33660870	VBOSS RADIOGRAPHIC TEMPLATE
47820108	8 mm box chisel - Bone craft
4800-2822	GRADUATED DUCKBILL PROBE
48010000	MAC TRAY
48020000	DIAPASON IMPLANT TRAY
48020001	DIAP MILL INSTRUMENT TRAY 2
48021200	DIAP MILL FLEXIBLE PED. FEELER
48021200	DIAP MILL FLEXIBLE PED. FEELER

Instrument Ref #	Instrument Description
48026000	DIAP MILL DISTRACTOR
48026100	DIAP MILL COMPRESSOR
48026200	DIAP MILL DEROTATION WRENCH
48027000	DIAP MILL ANTI TORQUE KEY
48027100	DIAP MILL TORQUE WRENCH
48040000	DIAP MILL INSTRUMENT TRAY
48040001	XIA SCOLI SCREW TRAY
48040001A	XIA SS - SS SCREWS CONTAINER LID
48040002	XIA SCOLI HOOK TRAY
48040003	XIA SCOLI MAC TRAY
48040003A	MAC CONTAINER LID - MAC STAINLESS STEEL
48040004	XIA TI SCREW TRAY
48040004A	XIA TITANIUM - TITANIUM SCREWS CONTAINER LID
48040005	XIA TI COMMON INSTRUMENT TRAY
48040005A	XIA - COMMON INSTRUMENTS CONTAINER LID
48040006	XIA TI HOOK TRAY
48040006A	XIA TITANIUM - HOOKS CONTAINER LID
48040007	XIA SS HOOK TRAY VERSION II
48040007A	XIA SS - SS HOOKS CONTAINER LID
48040008A	XIA ANTERIOR - ANT. SS IMPLANTS CONTAINER LID
48040009	XIA TI ANT IMPLANT TRAY
48040009A	XIA TI ANTERIOR - ANT. IMPLANTS CONTAINER LID
48040009B	XIA TI SCREW TRAY
48040010	XIA SCOLI PEDICLE HK PREPARER
48040011	XIA ANT INSTRUMENT TRAY
48040011A	XIA TI ANTERIOR- ANT. INSTRUMENTS CONTAINER LID
48040012	XIA STAINLESS RB HOOK TRAY
48040014A	XIA TITANIUM - PRE BENT CONTAINER LID
48040020	XIA SCOLI HOOK FORCEPS
48040030	XIA SCOLI C-RINGS
48040040	XIA SCOLI LATERAL HOOK FORCEPS
48040100	XIA SCOLI ROD ROTATION FORCEPS
48040110	XIA SCOLI LAM HK PREP-NARR BLD
48040120	XIA SCOLI MAC FORCEPS
48040120	XIA SCOLI MAC FORCEPS
48040130	XIA SCOLI CALIPER
48040140	XIA SCOLI ROD INSERTION FORCEPS
48040140	XIA SCOLI ROD INSERTION FORCEPS
48040154	XIA 4.5MM MODULAR TAP
48040155	XIA 5.5MM MODULAR TAP
48040156	XIA 6.5MM MODULAR TAP
48040157	XIA 7.5MM MODULAR TAP
48040158	XIA 8.5MM MODULAR TAP
48040159	XIA ILIOS LP MODULAR TAP
48040165	XIA 5.5MM CANNULATED TAP

Appendix 2:

Rigid container compatibility for device sets

Instrument Ref #	Instrument Description
48040166	XIA 6.5MM CANNULATED TAP
48040170	XIA STRAIGHT HOOK FORCEPS
48040180	XIA LT CORONAL-PLANE BENDER
48040190	XIA RT CORONAL-PLANE BENDER
48040230	XIA K-WIRE
48040240	XIA SCOLI STAPLE IMPACTOR
48040241	XIA ANT DUAL STAPLE IMPACTOR
48040242	XIA ANT ANGLED AWL
48040243	XIA ANT PARALLEL DISTRACTOR
48040244	XIA ANT PARALLEL COMPRESSOR
48040245	XIA ANT 3.5 MM HEX DRIVER
48040246	XIA ANT CALIPER
48040247	XIA ANT MAC FORCEPS
48040300	XIA SCOLI ROUND HANDLE
48041020	XIA FORCEPS
48041040	XIA LATERAL HOOK FORCEPS
48041170	XIA STRAIGHT HOOK FORECEPS
48041200	XIA T-RATCHET HANDLE
48041300	XIA ROUND-RATCHET HANDLE
48041310	XIA ROUND HANDLE PA SCREWDR
48041311	XIA II SHAFT
48041320	XIA ROUND HANDLE MA SCREWDR
48041321	XIA SHAFT RND HNDL MA SCRDR
48047009	XIA TI INSERTER (NEW VERSION)
48047011L	XIA TI XIA BENDING IRON LEFT
48047011R	XIA TI XIA BENDING IRON RIGHT
48047016	XIA TI PERSUADER (NEW VERSION)
48047018	XIA ROD FORK
48047025	XIA PEDICLE HOOK PREPARER
48047029	XIA HOOK IMPACTOR
48047032	XIA MONODRIVER
48047033	XIA POLY ADJUSTMENT DRIVE
48500000	REFLEX TRAY
48500003	REFLEX SCREWCRACK
48500004	REFLEX CONTAINER
48500004A	REFLEX CONTAINER INNER LID
48500004B	DAUGHTER TRAY LID
48500004C	REFLEX MIDDLE INSTRUMENT TRAY
48500100	REFLEX CALIPER
48500200	REFLEX PLATE BENDER
48500300	REFLEX PLATE HOLDER
48500401	REFLEX PIN
48500500	REFLEX DRILL GUIDE
48500505	REFLEX DOUBLE BARREL DRILL GUIDE
48500600	REFLEX QUICK RELEASE HANDLE

Instrument Ref #	Instrument Description
48500610	REFLEX 10 MM DRILL
48500612	REFLEX 12 MM DRILL
48500614	REFLEX 14 MM DRILL
48500616	REFLEX 16 MM DRILL
48500618	REFLEX 18 MM DRILL
48500620	REFLEX 20 MM DRILL
48500622	REFLEX 22 MM DRILL
48500700	REFLEX TAP
48500705	REFLEX AWL
48500800	REFLEX SCREWDRIVER
48500900	REFLEX REVISION SCREWDRIVER
48500900B	REFLEX REVISION SCREWDRIVER INSIDE SHAFT
48500805	REFLEX TIGHTENING SCREWDRIVER SHAFT
48511815	REFLEX HYBRID RETAINING COLLET SCREW DRIVER ASSEMBLY
48511815A	REFLEX HYBRID COLLET SCREWDRIVER SLEEVE
48511815B	REFLEX HYBRID COLLET SCREWDRIVER SHAFT
48511815C	REFLEX HYBRID COLLET SCREWDRIVER HANDLE
48511820	REFLEX HYBRID QUICK-TURN SCREWDRIVER ASSEMBLY
48511820B	REFLEX HYBRID QUICK-TURN SCREWDRIVER INNER SHAFT
48511906	REFLEX HYBRID REVISION DRIVER ASSEMBLY
48511906B	REFLEX HYBRID REVISION DRIVER DRAW ROD
48501610	10MM ALL IN ONE DRILL BIT
48501618	18MM ALL IN ONE DRILL BIT
48501620	20MM ALL IN ONE DRILL BIT
48501622	22MM ALL IN ONE DRILL BIT
48510000	HYBRID IMPLANT CONTAINER
48510001	HYBRID INSTRUMENT CONTAINER
48510100	HYBRID CALIPER
48510200	HYBRID PLATE BENDER
48510300	HYBRID PLATE HOLDER
48510400	HYBRID FIXATION PIN INSERTER
48510410	HYBRID TEMP FIXATION PIN - STD
48510420	HYBRID TEMP FIXATION PIN - LNG
48510500	HYBD SNGL-BARR-DRILL GUIDE-FIX
48510505	HYBD SNGL-BARR-DRILL GUIDE-VAR
48510510	HYBD DBL-BARR-DRILL GUIDE-FIX
48510515	HYBD DBL-BARR-DRILL GUIDE-VAR
48510520	HYBRID ALL-IN-ONE GUIDE FIXED
48510525	HYBRID ALL-IN-ONE GUIDE VAR
48510600	HYBRID QUICK-RELEASE HANDLE
48510610	HYBRID DRILL - 10MM
48510612	HYBRID DRILL - 12MM
48510614	HYBRID DRILL - 14MM
48510616	HYBRID DRILL - 16MM
48510618	HYBRID DRILL - 18MM

Appendix 2:

Rigid container compatibility for device sets

Instrument Ref #	Instrument Description
48510620	HYBRID DRILL - 20MM
48510650	HYBRID AWL
48510700	HYBRID TAP
48510800	HYBRID SCREWDRIVER
48510810	HYBRID FINAL-TIGHTENING SCRDRVR
48510900	HYBRID RESCUE SCRDRVR W/SHAFT
48510900B	Rescue Screwdriver Inside Shaft
48510910	HYBRID REVISION SCREWDRIVER
48720000	Container
48720100	Slap-hammer
48720108	8 mm box chisel
48720110	10 mm box chisel
48720112	12 mm box chisel
48720200	Bone craft cutting device
48720251	Teeth Insert - Bone craft
48720300	Bone shaping forceps
48720400	Bone inserter
48720500	Final Impactor
48721008	8mm/0ø blade guide
48721010	10mm/0ø blade guide
48721012	12mm/0ø blade guide
48721408	8mm/4ø blade guide
48721410	10mm/4ø blade guide
48721412	12mm/4ø blade guide
48721810	10mm/8ø blade guide
48721812	12mm/8ø blade guide
48722008	8mm/0ø drill guide
48722010	10mm/0ø drill guide
48722012	12mm/0ø drill guide
48722408	8mm/4ø drill guide
48722410	10mm/4ø drill guide
48722412	12mm/4ø drill guide
48722810	10mm/8ø drill guide
48722812	12mm/8ø drill guide
48905000	TRIO Container
48905000A	Trio - Container Lid
48905010	Tissue Prot Sleeve for Tap
48905020	Pedicular Screwdriver Shaft - Trio
48905030	Ext Screw Post Inserter Tube
48905040	Flexible Ext Screw Post A
48905045	Flex Ext Screw Post B
48905050	Rod Bender
48905060	5 Prongs Key Shaft- Trio
48905065	3 Prongs Prov Locking Key- Trio
48905070	Torque Wrench

Instrument Ref #	Instrument Description
48905075	5 Prongs Key Sock for Torq Wre- Trio
48905100	Vertebral Rep. Inst. Container- Trio
48905110	Spondy Reduction Instrument
48905120	Angular Reduction Instrument
48906000	Offset Rod Conn Container
48906010	Connector Pusher
48906020	Connector Holding Clip
48906030	Rod Compression Forceps
48906040	Rod Distraction Forceps
48906050	Conn 3.5mm Hex Tightener Shaft
48906060	Conn 11.5mm Hex Key Shaft
48906065	Conn 11.5mm Hex Prov Lock Key- Trio
48906070	Conn 11.5mm Hex for Torque Wre
48906075	Conn 3.5mm Hex for Torque Wren
48906080	Connector Anti Torque Key
48906090	Connector Derotation Cap
675000	Opus Instrument Tray
675005	Opus Screwdriver
675006	Opus Nut Wrench
675007	Opus Anti-Rotation Wrench
675008	Opus Derotation Wrench
675011	Opus Clip
675012	Opus 3 MM HEX SCRWDVR
675015	Opus COMPRESSION FORCEPS
675016	Opus DISTRACTION FORCEPS
675018	MAC CROSSLINK FORCEPS
675019	Opus TORQUE WRENCH
675020	Opus PEDICLE TESTER
675021	Opus SQUARE AWL
675023	MAC 8 MM SCRWDVR
675024	MAC CALIPER
675025	OPUS ANTI-ROTATION WRENCH
675055	OPUS TAP 5.5MM MODULAR
675065	OPUS TAP 6.7MM MODULAR
675075	OPUS TAP 7.7MM MODULAR
676000	Opus Implant Tray
804459	VISGRIP FORCEPS
873111	OIS REAMER T11
873112	OIS REAMER T12
873113	OIS REAMER T13
873114	OIS REAMER T14
873207	7 MM Distractor
873208	OIS DISTRACTOR T08
873209	OIS DISTRACTOR T09
873210	OIS DISTRACTOR T10

Appendix 2:

Rigid container compatibility for device sets

Instrument Ref #	Instrument Description
873211	OIS DISTRACTOR T11
873212	OIS DISTRACTOR T12
873213	OIS DISTRACTOR T13
873214	OIS DISTRACTOR T14
873308	8 MM Reamer Distractor
873309	OIS REAMER DISTRACTOR T09
873310	OIS REAMER DISTRACTOR T10
873311	OIS REAMER DISTRACTOR T11
873312	OIS REAMER DISTRACTOR T12
873313	OIS REAMER DISTRACTOR T13
873314	OIS REAMER DISTRACTOR T14
87827	SR90D Hook Impactor
884002	CENTAUR ROD CONTAINER
884003	CENTAUR PLATE CONTAINER
884004	CENTAUR CONTAINER
884010	CENTAUR SQUARE AWL
884011	CENTAUR ROUND TIP SCDR
884012	CENTAUR TIGHTENING SCDR
884013	CENTAUR DISTRACTION COMPRESSION FORCEPS
884014	CENTAUR PLATE SUPPORT HOLDER
884015	CENTAUR PLATE HOLDER
884018	CENTAUR TWISTED HEX SCDR
884019	CENTAUR VERTEBRAL BODY DISTRACTOR
884020	CENTAUR ROD BENDING FORCEPS
884021	CENTAUR CONNECTOR HOLDER
884022	CENTAUR ROD HOLDER
884023	CENTAUR ANTI-ROTATION WRENCH
884024	CENTAUR ROD CONTRACTOR
884025	CENTAUR DEPTH GAUGE
884026	CENTAUR BENDING FORCEPS PLATE
884027	CENTAUR BONE RASP
804459	CENTAUR- VISGRIP FORCEPS
884118	DIAP MILL 4.5MM SELF-HLD SCWDR
904100	SR90D Counter Torque Tube
904101	SR90D CrossConnectorPlugDriver
904102	SR90D MultAnglScrwInsrtThrdLoc
904103	SR90D MultiAngle ScrewInsertter
904104	SR90D Standard Screw Driver
904105	SR90D MultAnglScrewAdjsmntTool
904106	SR90D Rhombus Final Driver
904109	SR90D Final Driver
904111	SR90D Rod Persuader
904112	SR90D Hook Holder
904114	SR90D Rocker
904115	SR90D CrossConnectorBenderJTip

Instrument Ref #	Instrument Description
904116	SR90D Cross Connector Bender
904118	SR90D Lumbar Tray
904119	SR90D Thoracic Instruments Tray
904120	SR90D Extra Instrument Tray
904121	SR90DInitialInsertterTaperedTor
904122	SR90D Cross Connector Tray
904123	SR90D Capspin Tapered Torx
904124	SR90D Thoracic Implant Tray
904128	SR90D Pedicle Awl
904140	SR90D Square Lock Tap 4.25 MM
904140	SR90D Square Lock Tap 4.25 MM
904141	SR90D Square Lock Tap 5.25 MM
904142	SR90D Square Lock Tap 6.25 MM
904143	SR90D Square Lock Tap 7.25 MM
904144	SR90D Canulatd SqrLocTap4.25MM
904145	SR90D Canulatd SqrLocTap5.25MM
904146	SR90D Canulatd SqrLocTap6.25MM
904147	SR90D Canulatd SqrLocTap7.25MM
904150	SR90D Ratchet THandle Sqr Lock
904151	SR90D Ratchet StdHandle SqrLoc
904221	SR90D Initial Insertter Tube
904321	SR90D Rod Pusher 90 Degree
904740	SR90D Compressor Handle
904743	SR90D StraightModular Tip Left
904744	SR90D StraightModular TipRight
904746	SR90D Offset Modular Tip Left
904747	SR90D Offset Modular Tip Right
904750	SR90D Distractor Modular Tip
RT0011	SR90D Hook Distractor
RT0027	SR90D 3/16" Combination Wrench
RT0029	SR90D Scoliosis Rod Template

Appendix 2:

Rigid container compatibility for device sets

OASYS System

Instrument Ref #	Instrument Description
48550000A	Oasys - Implants Container Lid
48560000A	Oasys - Instruments Container Lid
48560323	Oasys 2.5 mm Drill
48560423	Oasys 3.0 mm Drill
48561041	Oasys Distractor
48561044	Oasys Occiput Fixed Drill Guide, 6 & 8mm
48561045	Oasys Occiput Fixed Drill Guide, 10 & 12mm
48561046	Oasys Occiput Fixed Drill Guide, 14 & 16mm
48561039	Oasys Rod Rotation Forceps
48561034	Oasys 12 mm Fixed Drill Guide
48561035	Oasys 14 mm Fixed Drill Guide
48561037	Oasys Poly Adjustment Driver
48561036	Oasys Ball Tip Probe
48561042	Oasys Hexdriver (ver. III)
48561004	Container 4, Oasys
48560001	OASYS AUXILIARY TRAY
48560016	OASYS POLYAXIAL SCREWDRIVER
48560002	OASYS ROD CUTTER TRAY
48561038	OASYS ROD CUTTER
48560025	OASYS HEX DRIVER
48560313	OASYS 3.5MM DRILL
48560314	OASYS 4.0MM DRILL
48560413	OASYS 4.0MM DRILL
48560414	OASYS 4.0MM TAP
48561016	OASYS POLYAXIAL SCREWDRIVER
48561115	OASYS PEDICULAR PROBE
48561074	OASYS Cross Connector Nut Insertter
48561075	OASYS Cross Connector Nut Tightener
48565323	OASYS 2.5 mm Drill for 3.5mm Bone Screw
48565423	OASYS 3.0 mm Drill for 4.0mm Bone Screw
48565523	OASYS 4.5 mm Drill for 4.5mm Bone Screw

Tehtonix System

Instrument Ref #	Instrument Description
48200165	TECHTONIX TAP 5 MM
48200166	TECHTONIX TAP 6 MM
48200300	TECHTONIX GEARSHIFT PROBE STRAIGHT
48206002	TECHTONIX DISTRACTOR
48207009	TECHTONIX SCREWDRIVER SLEEVE
48207028	TECHTONIX COUNTERTORQUE TUBE
48209000	TECHTONIX TRAY
48209020	TECHTONIX PLATE HOLDER
48209030	TECHTONIX SELF-HOLDING SCREWDRIVER
48209035	TECHTONIX 4.5 MM BLOCKER INSERTER
48209065	TECHTONIX TORQUE WRENCH SOCKET
48209066	TECHTONIX 4.5 MM TORQUE WRENCH SOCKET

AVS TL Peek Spacer

Instrument Ref #	Instrument Description
48361000	T-HANDLE
48370000	TOTAL TL PEEK CONTAINER
48389100	TL SPACER INSERTER STRAIGHT
48389150	TL SPACER INSERTER ANGLED
48389200	TL SPACER SUPPORT
48389250	TL SPACER GRAFT COMPACTOR
48389300	TL SPACER IMPACTOR STARIGHT
48389350	TL SPACER IMPACTOR ANGLED
48389407	TL SPACER TRIAL 7
48389408	TL SPACER TRIAL 8
48389409	TL SPACER TRIAL 9
48389410	TL SPACER TRIAL 10
48389411	TL SPACER TRIAL 11
48389412	TL SPACER TRIAL 12
48389413	TL SPACER TRIAL 13
48389414	TL SPACER TRIAL 14
48389415	TL SPACER TRIAL 15
48389416	TL SPACER TRIAL 16
48389417	TL SPACER TRIAL 17
48389418	TL SPACER TRIAL 18
48389550	TL SPACER MIS INSERTER ANGLED
48389500	TL SPACER MIS INSERTER STRAIGHT

Appendix 2:

Rigid container compatibility for device sets

AVS PL and AVS UniLIF Peek Spacer

Instrument Ref #	Instrument Description
48350002	INSTRUMENT BASE
48350003	TRIALS INSERT
48350004	INSTRUMENT CONTAINER LID (AVS PL)
48350006	IMPLANT CONTAINER (AVS PL)
48350008	UPPER INSERT (8 AND 9MM WIDE IMPLANTS)
48350009	MIDDLE INSERT (11MM WIDE IMPLANTS)
48350010	0 DEGREE IMPLANT CADDY
48350911	PL SPACER IMPACTOR
48350022	AVS 8mm-9mm Wide Implant Tray
48350023	AVS 11mm Wide Implant Tray
48350021	AVS UniLIF PEEK Implants Lid
48350031	AVS UniLIF PEEK Implant Base
48350024	AVS PL PEEK Implants Lid
48350020	AVS PL PEEK Implant Base
48350007	OIC PEEK – Implant Container
48350005	OIC PEEK – Instrument Container lid
48350026	OIC PEEK II – Implants Lid (wedge nose)
48350032	OIC PEEK II – Implant Base (wedge nose)
48350030	OIC PEEK - PEEK Implants Lid
48350025	OIC PEEK – PEEK Implant Base
48352006	TRIAL 6 X 20 X 0 - 8MM
48352007	TRIAL 7 X 20 X 0 - 8MM
48352008	TRIAL 8 X 20 X 0 - 8MM
48352009	TRIAL 9 X 20 X 0 - 8MM
48352010	TRIAL 10 X 20 X 0 - 8MM
48352011	TRIAL 11 X 20 X 0 - 8MM
48352012	TRIAL 12 X 20 X 0 - 8MM
48352013	TRIAL 13 X 20 X 0 - 8MM
48352014	TRIAL 14 X 20 X 0 - 8MM
48352015	TRIAL 15 X 20 X 0 - 8MM
48352016	TRIAL 16 X 20 X 0 - 8MM
48352106	TRIAL 6 X 20 X 0 - 11MM
48352107	TRIAL 7 X 20 X 0 - 11MM
48352108	TRIAL 8 X 20 X 0 - 11MM
48352109	TRIAL 9 X 20 X 0 - 11MM
48352110	TRIAL 10 X 20 X 0 - 11MM
48352111	TRIAL 11 X 20 X 0 - 11MM
48352112	TRIAL 12 X 20 X 0 - 11MM
48352113	TRIAL 13 X 20 X 0 - 11MM
48352114	TRIAL 14 X 20 X 0 - 11MM
48352115	TRIAL 15 X 20 X 0 - 11MM
48352116	TRIAL 16 X 20 X 0 - 11MM
48352206	TRIAL 6 X 20 X 0 - 9MM
48352207	TRIAL 7 X 20 X 0 - 9MM
48352208	TRIAL 8 X 20 X 0 - 9MM

AVS PL and AVS UniLIF Peek Spacer

Instrument Ref #	Instrument Description
48352209	TRIAL 9 X 20 X 0 - 9MM
48352210	TRIAL 10 X 20 X 0 - 9MM
48352211	TRIAL 11 X 20 X 0 - 9MM
48352212	TRIAL 12 X 20 X 0 - 9MM
48352213	TRIAL 13 X 20 X 0 - 9MM
48352214	TRIAL 14 X 20 X 0 - 9MM
48352215	TRIAL 15 X 20 X 0 - 9MM
48352216	TRIAL 16 X 20 X 0 - 9MM
48350963	GRAFT BLOCK
48350011	0 DEGREE IMPLANT CADDY LID - US VERSION
48350013	General 4° Tray (US and ROW)
48350018	4 DEGREE IMPLANT CADDY LID - US VERSION

AVS Anchor - C

Instrument Ref #	Instrument Description
48328625AR	SCREW EXTRACTOR REPLACEMENT DRAW ROD

Trio PS

Instrument Ref #	Instrument Description
48913040	PLATE BENDER
48913010	PEDICULAR SCREW DRIVER
48913090	TORQUE WRENCH
48913095	ANTITORQUE WRENCH SHAFT
48913020	SCREW BOLT ADJUSTER
48913060	NUT DRIVER ROUND HANDLE
48913065	NUT DRIVER T-HANDLE
48913050	PLATE HOLDER
48913070	DISTRACTOR
48913080	COMPRESSOR
48913045	DOMES ASSEMBLER
48913030	FLEXIBLE EXTENDED SCREW POST C
48913035	FLEXIBLE EXTENDED SCREW POST D
48913015	REDUCTION EXTENDER HOLDER
48913000	TRIO PS CONTAINER

Appendix 2:

Rigid container compatibility for device sets

Instrument Ref #	Instrument Description
48250001	FIXATION INSTRUMENT TRAY
48250001C	LUXOR FIXATION TRAY INSERT
48250001B	LUXOR FIXATION TRAY MIDDLE INSERT
48250001A	LUXOR FIXATION TRAY BOTTOM INSERT
48250000AA	LUXOR RETRACTOR TRAY INSERT
48250350	BAYONETED AWL
48250300	BAYONETED BONE PROBE
48250360	TAPERED BALL PROBE
48250370	COMPRESSOR
48250310	BAYONETED SCREWHEAD ADJUSTER
48250320	ROD CALIPERS
48250330	ROD INTRODUCER
48250000	MORS RETRACTOR TRAY
48250010	GUIDE PIN
48250011	DILATOR 1
48250012	DILATOR 2
48250013	DILATOR 3
48250014	DILATOR 4
48250015	DILATOR 5
48250016	INITIAL DILATOR
48250017	KELLY RETRACTOR
48250018	BLUNT DISSECTOR
48250019	CANNULATED BLUNT DISSECTOR
48250020	RETRACTOR BASE ASSEMBLY
48250030	RETRACTOR BASE
48250040	SET OF RETRACTOR BLADES 40 MM
48250050	SET OF RETRACTOR BLADES 50 MM
48250060	SET OF RETRACTOR BLADES 60 MM
48250070	SET OF RETRACTOR BLADES 70 MM
48250080	SET OF RETRACTOR BLADES 80 MM
48250090	SET OF RETRACTOR BLADES 90 MM
48250105	SET OF RETRACTOR BLADES 105 MM
48250120	SET OF RETRACTOR BLADES 120 MM
48250200	DRIVER
48250230	MEDIFLEX SNAKE ARM
48250240	MEDIFLEX ARM POST
48240005	DECOMPRESSION INSTRUMENT TRAY, MORS
48242240	BAYONETED KERRISON 2 MM, 40 DEGREES
48242290	BAYONETED KERRISON 2 MM, 90 DEGREES
48242340	BAYONETED KERRISON 3 MM, 40 DEGREES
48242390	BAYONETED KERRISON 3 MM, 90 DEGREES
48242440	BAYONETED KERRISON 4 MM, 40 DEGREES
48242490	BAYONETED KERRISON 4 MM, 90 DEGREES
48242540	BAYONETED KERRISON 5 MM, 40 DEGREES
48242590	BAYONETED KERRISON 5 MM, 90 DEGREES

Instrument Ref #	Instrument Description
48242200	BAYONETED KERRISON UPBITTING (curved at tip) 2 MM
48242400	BAYONETED KERRISON UPBITTING (curved at tip) 4 MM
48243045	BAYONETED WOODSON PROBE 45 DEGREES
48243090	BAYONETED WOODSON PROBE 90 DEGREES
48243000	BAYONETED 110 DEGREES BALL PROBE, STRAIGHT, LONG
48243001	BAYONETED 110 DEGREES BALL PROBE, STRAIGHT, SHORT
48244102	BAYONETED PENFIELD, PULL# 2
48244202	BAYONETED PENFIELD, PUSH # 2
48244104	BAYONETED PENFIELD, PULL# 4
48244204	BAYONETED PENFIELD, PUSH # 4
48241103	BAYONETED NERVE HOOK, 90 DEGREES, BLUNT TIP
48241201	RETRACTOR NERVE ROOT
48241202	RETRACTOR, WIDE NERVE ROOT
48245001	SUCTION TIP WITH BEND
48245002	SUCTION TIP WITH LIP WITH BEND
48245010	MICRO SCISSOR (SINGLE ACTION)
20-1490KI	BI POLAR FORCEPS (US CONNECTION), ANGLED
E1457	COLORADO NEEDLE 7" WITH 2" BEND
48247001	SYPERT RONGEUR
48247002	Suction Tube Stylet
48561914	TAP SLEEVE (OASYS LE)
48561026	COMPRESSOR (OASYS LE)

LUXOR

LUXOR

Appendix 2:

Rigid container compatibility for device sets

LITE Decompression Tubes

Instrument Ref #	Instrument Description
48081203	MIS tube Ø12 x 3cm
48081204	MIS tube Ø12 x 4cm
48081205	MIS tube Ø12 x 5cm
48081206	MIS tube Ø12 x 6cm
48081207	MIS tube Ø12 x 7cm
48081208	MIS tube Ø12 x 8cm
48081209	MIS tube Ø12 x 9cm
48081403	MIS Tube Ø14mm x 3cm
48081404	MIS Tube Ø14mm x 4cm
48081405	MIS Tube Ø14mm x 5cm
48081406	MIS Tube Ø14mm x 6cm
48081407	MIS Tube Ø14mm x 7cm
48081408	MIS Tube Ø14mm x 8cm
48081409	MIS Tube Ø14mm x 9cm
48081410	MIS Tube Ø14mm x 10.5cm
48081412	MIS Tube Ø14mm x 12cm
48081603	MIS Tube Ø16mm x 3cm
48081604	MIS Tube Ø16mm x 4cm
48081605	MIS Tube Ø16mm x 5cm
48081606	MIS Tube Ø16mm x 6cm
48081607	MIS Tube Ø16mm x 7cm
48081608	MIS Tube Ø16mm x 8cm
48081609	MIS Tube Ø16mm x 9cm
48081610	MIS Tube Ø16mm x 10.5cm
48081612	MIS Tube Ø16mm x 12cm
48081803	MIS Tube Ø18mm x 3cm
48081804	MIS Tube Ø18mm x 4cm
48081805	MIS Tube Ø18mm x 5cm
48081806	MIS Tube Ø18mm x 6cm
48081807	MIS Tube Ø18mm x 7cm
48081808	MIS Tube Ø18mm x 8cm
48081809	MIS Tube Ø18mm x 9cm
48081810	MIS Tube Ø18mm x 10.5cm
48081812	MIS Tube Ø18mm x 12cm
48082003	MIS Tube Ø20mm x 3cm
48082004	MIS Tube Ø20mm x 4cm
48082005	MIS Tube Ø20mm x 5cm
48082006	MIS Tube Ø20mm x 6cm
48082007	MIS Tube Ø20mm x 7cm
48082008	MIS Tube Ø20mm x 8cm
48082009	MIS Tube Ø20mm x 9cm
48082010	MIS Tube Ø20mm x 10.5cm
48082012	MIS Tube Ø20mm x 12cm
48082203	MIS Tube Ø22mm x 3cm
48082204	MIS Tube Ø22mm x 4cm

LITE Decompression Tubes

Instrument Ref #	Instrument Description
48082205	MIS Tube Ø22mm x 5cm
48082206	MIS Tube Ø22mm x 6cm
48082207	MIS Tube Ø22mm x 7cm
48082208	MIS Tube Ø22mm x 8cm
48082209	MIS Tube Ø22mm x 9cm
48082210	MIS Tube Ø22mm x 10.5cm
48082212	MIS Tube Ø22mm x 12cm
48082603	MIS Tube Ø26mm x 3cm
48082604	MIS Tube Ø26mm x 4cm
48082605	MIS Tube Ø26mm x 5cm
48082606	MIS Tube Ø26mm x 6cm
48082607	MIS Tube Ø26mm x 7cm
48082608	MIS Tube Ø26mm x 8cm
48082609	MIS Tube Ø26mm x 9cm
48082610	MIS Tube Ø26mm x 10.5cm
48082612	MIS Tube Ø26mm x 12cm
48250010	Guide Pin
48080006	Dilator 1 (Ø6mm OD x 30cm)
48080012	Dilator 2 (Ø10.75mm OD x 25cm) for Ø12mm tube
48080014	Dilator 3 (Ø12.75mm OD x 23cm) for Ø14mm tube
48080016	Dilator 4 (Ø14.75mm OD x 21cm) for Ø16mm tube
48080018	Dilator 5 (Ø16.75mm OD x 19cm) for Ø18mm tube
48080020	Dilator 6 (Ø18.75mm OD x 17cm) for Ø20mm tube
48080022	Dilator 7 (Ø20.75mm OD x 15cm) for Ø22mm tube
48080026	Dilator 8 (Ø24.75mm OD x 13cm) for Ø26mm tube
48080230	Snake Arm
48080000	Container/Tray
48080001	Auxiliary Container/Tray
48080002	Decompression Tubes Container
48080002AA	Tray Insert - 12/14/16 mm Tubes
48080002BB	Tray Insert - 18/22/26 mm Tubes
48080002CC	Decompression Tubes Container (Base and Lid Only)
48288210	LITE Bidelivery Tray (Bone Graft Case)

Appendix 2:

Rigid container compatibility for device sets

RelianceLiTe Instruments

Instrument Ref #	Instrument Description
48060200	Initial Distractor
48060806	6mm Reamer Distractor - parallel
48060807	7mm Reamer Distractor - parallel
48060808	8mm Reamer Distractor - parallel
48060809	9mm Reamer Distractor - parallel
48060810	10mm Reamer Distractor - parallel
48060811	11mm Reamer Distractor - parallel
48060812	12mm Reamer Distractor - parallel
48060813	13mm Reamer Distractor - parallel
48060814	14mm Reamer Distractor - parallel
48060815	15mm Reamer Distractor - parallel
48060816	16mm Reamer Distractor - parallel
48060906	6mm Paddle Distractor - parallel
48060907	7mm Paddle Distractor - parallel
48060908	8mm Paddle Distractor - parallel
48060909	9mm Paddle Distractor - parallel
48060910	10mm Paddle Distractor - parallel
48060911	11mm Paddle Distractor - parallel
48060912	12mm Paddle Distractor - parallel
48060913	13mm Paddle Distractor - parallel
48060914	14mm Paddle Distractor - parallel
48060915	15mm Paddle Distractor - parallel
48060916	16mm Paddle Distractor - parallel
48066440	Kerrison Rongeur 4mm, 40°
48066490	Kerrison Rongeur 4mm, 90°
48066540	Kerrison Rongeur 5mm, 40°
48066590	Kerrison Rongeur 5mm, 90°
48060500	9mm Wide Straight Osteotome
48060401	8mm x 20mm, (0.5mm-0.75mm), single sided, angled 30°
48060408	8mm x 20mm, (0.5mm-0.75mm) Box Curette Rasp Dual Sided Straight
48061001	Slap Hammer
48065000	Bone Funnel
48065500	Plunger
48061100	Teardrop Straight
48061101	Teardrop Straight and Angled 30°
48061200	Teardrop Bayonet Straight
48061210	Teardrop Bayonet Straight and Upbiting 10°
48062101	Box 8mm wide x 15mm long Angled 30°
48062200	Box 8mm wide x 15mm long bayonet Straight
48062100	Box 8mm wide x 15mm long Straight
48063100	7mm oblong cup straight
48063110	7mm oblong cup straight upbiting 10°
48063102	7mm oblong cup straight left angled 30°
48063101	7mm oblong cup straight right angled 30°
48063200	7mm oblong cup Straight and Bayonet

RelianceLiTe Instruments

Instrument Ref #	Instrument Description
48063202	7mm oblong cup Straight and Bayonet left angled 30°
48063201	7mm oblong cup Straight and Bayonet right angled 30°
48066045	Woodson Probe Bayoneted 45 degree
48066090	Woodson Probe Bayoneted 90 degree
48066104	Penfield Bayoneted, Pull #4
48066204	Penfield Bayoneted, Push #4
48066103	Nerve Hook Bayoneted, 90 Degree, Blunt Tip
48066007	Frazier Suction Tube 10Fr 7"
48061000	T Handle
48067000	Distraction / Endplate Preparation Tray
48067000AA	Distraction / Endplate Preparation Tray Top Level Insert
48067000AB	Distraction / Endplate Preparation Tray Mid Level Insert
48067010	General Instruments Tray
48067010AA	General Instruments Tray Top Level Insert

Appendix 2:

Rigid container compatibility for device sets

Xia 4.5

Instrument Ref #	Instrument Description
48137059	TAPERED BALL PROBE
48131320	SREWDRIVER FOR MONOAXIAL SCREWS
48131321	SHAFT FOR MONOAXIAL SCREWDRIVER
48131310	SCREWDRIVER FOR POLYAXIAL SCREWS
48131311	SHAFT FOR POLYAXIAL SCREWDRIVER
48137008L	4 MM BLOCKER INSERTER LONG
48137008S	4 MM BLOCKER INSERTER SHORT
48137058	T-HANDLE BLOCKER DRIVER
48130620	ROD TEMPLATE
48137800	ROD CUTTER
48130140	ROD GRIPPER
48137010	FRENCH BENDER
48137018	ROD FORK
48137009	INSERTER TUBE
48137016	PERSUADER
48137055	THORACIC PEDICLE PROBE
48137019	ROD PUSHER
48130100	ROD ROTATION FORCEPS
48137056	ROD ROTATION KEY
48137011R	BENDING IRON R
48137011L	BENDING IRON L
48137027	HOOK HOLDER
48131040	LATERAL HOOK HOLDER
48137025	PEDICLE PREPARER
48137021	LAMINA PRAPARER
48137029	HOOK IMPACTOR
48130190R	CORONAL PLANE BENDER R
48130190L	CORONAL PLANE BENDER L
48137057	SCREWDRIVER FOR SET SCREWS HEX3
48130120	CROSS CONNECTOR HOLDER
48130130	CALIPER
48136100	COMPRESSOR
48136000	DISTRACTER
48137026	ANTI TORQUE KEY
48137028	TORQUE WRENCH
48130241	DIAL STAPLE HOLDER/ IMPACTOR
48130001	SCREWS AND CROSS CONNECTORS BOX
48130002	HOOKS AND COMPONENTS BOX
48130003	INSTRUMENT BOX 1
48130004	INSTRUMENT BOX 2
48040015	XIA SS ILIAC TRAY
48040016	XIA TI ILIAC TRAY
48130310	SELF HOLDING SHAFT FOR POLYAXIAL SCREWDRIVER
481301311	6.0 MM MODULAR TAP
481301312	7.0 MM MODULAR TAP

Xia 4.5

Instrument Ref #	Instrument Description
48139110	TAB REMOVER, REDUCTION SCREW
481301310	ROUND HANDLE MONOAXIAL SCREWDRIVER
481301320	ROUND HANDLE REDUCTION POLYAXIAL SCREWDRIVER
48130320	MODULAR MONODRIVER
481301321	HOOK HOLDER - FORCEPS 4.5
48130005	OUTLIER CONTAINER
4832900	AS INSERTER
48329050	AS IMPACTOR 1
48329060	AS IMPACTOR 2
48329100	AS GRAFT SUPPORT
48329204	AS TRIAL 12X14X4
48329205	AS TRIAL 12X14X5
48329206	AS TRIAL 12X14X6
48329207	AS TRIAL 12X14X7
48329208	AS TRIAL 12X14X8
48329209	AS TRIAL 12X14X9
48329210	AS TRIAL 12X14X10
48329211	AS TRIAL 12X14X11
48329212	AS TRIAL 12X14X12
48329404	AS TRIAL 14X16X4
48329405	AS TRIAL 14X16X5
48329406	AS TRIAL 14X16X6
48329407	AS TRIAL 14X16X7
48329408	AS TRIAL 14X16X8
48329409	AS TRIAL 14X16X9
48329410	AS TRIAL 14X16X10
48329411	AS TRIAL 14X16X11
48329412	AS TRIAL 14X16X12
48321214	TOTAL AS PEEK CONTAINER
48329500	AL INSERTER
48329600	AL IMPACTOR
48329140	AL GRAFT SUPPORT
48329800	AL TRIAL INSERTER
48329710	AL TRIAL 22X28X10
48329712	AL TRIAL 22X28X12
48329714	AL TRIAL 22X28X14
48329716	AL TRIAL 22X28X16
48329718	AL TRIAL 22X28X18
48329720	AL TRIAL 22X28X20
48329910	AL TRIAL 28X33X10
48329912	AL TRIAL 28X33X12
48329914	AL TRIAL 28X33X14
48329916	AL TRIAL 28X33X16
48329918	AL TRIAL 28X33X18
48329920	AL TRIAL 28X33X20

Appendix 2:

Rigid container compatibility for device sets

Xia 4.5

Instrument Ref #	Instrument Description
48322228	TOTAL AL PEEK CONTAINER
48237005	K-WIRE TUBE
48230231	K-WIRE BLUNT
48240005BB	RELIANCE LITE DECOMPRESSION INSTRUMENT TRAY MIDDLE INSERT
48240005AA	RELIANCE LITE DECOMPRESSION INSTRUMENT TRAY TOP INSERT
48237000	XIA Precision System - Container
48237000A	XIA Precision System - RAD ROD TRAY
48130006	XIA® 4.5 Spinal System Implant Box, Pre-Cut Rods

RELIANCE

Instrument Ref #	Instrument Description
48360100	PITUITARY RONGEUR 4MM STRAIGHT
48360124	RELIANCE PITUITARY RONGEUR UP 4 MM
48360200	OSTEOTOME STRAIGHT
48360210	OSTEOTOME CURVED
48360300	NERVE ROOT RETRACTOR SMALL
48360310	NERVE ROOT RETRACTOR MEDIUM
48360320	NERVE ROOT RETRACTOR LARGE
48360400	DOUBLE-SIDED RASP SMALL
48360420	DOUBLE-SIDED RASP OFFSET SM
48360440	DOUBLE-SIDED RASP ANGLED SM
48360450	DOUBLE-SIDED RASP ANGLED MED
48360505	CURETTE W/ TEETH 5MM STRAIGHT
48360515	CURETTE W/ TEETH 5MM UP
48360525	CURETTE W/ TEETH 5MM DOWN
48360535	BAYONETED CURETTE STRAIGHT
48360807	REAMER-DISTRACOR 7MM
48360808	REAMER-DISTRACOR 8MM
48360809	REAMER-DISTRACOR 9MM
48360810	REAMER-DISTRACOR 10MM
48360811	RELIANCE REAMER DISTRACOR 11 MM
48360812	RELIANCE REAMER DISTRACOR 12 MM
48360813	RELIANCE REAMER DISTRACOR 13 MM
48360814	RELIANCE REAMER DISTRACOR 14 MM
48360815	RELIANCE REAMER DISTRACOR 15 MM
48361400	RELIANCE TAMP OFFSET
48361640	RELIANCE CUP CURETTE RIGHT OFFSET
48361610	RELIANCE RING CURETTE ANGLED
48360410	RELIANCE DBL SIDED RASP MEDIUM
48361013	RELIANCE PADDLE 13 MM
48360612	RELIANCE BOX CHISEL 12 MM
48360710	RELIANCE SLAP HAMMER SHAFT
48361600	RELIANCE RING CURETTE OFFSET
48361006	RELIANCE PADDLE 6 MM
48350951	AVS PL INSERTER 8 AND 9MM

RELIANCE

Instrument Ref #	Instrument Description
48350952	AVS PL INSERTER 11MM
48360545	RELIANCE BAYONETED CURETTE DOWN
48360555	RELIANCE BAYONETED CURETTE UP
48360614	RELIANCE BOX CHISEL 14 MM
48360700	RELIANCE SLAP HAMMER
48361010	RELIANCE PADDLE 10 MM
48361007	PADDLE 7MM
48361300	TAMP STRAIGHT
48361500	PEDICLE SCREW DISTRACOR
48361620	TEARDROP CURETTE OFFSET
48361630	TEARDROP CURETTE 30 DEGREE
48361670	CUP CURETTE LEFT 30 DEGREE
48361660	CUP CURETTE RIGHT 30 DEGREE
48361206	Trial PL circle 6 mm
48361208	Trial PL circle 8 mm
48361210	Trial PL circle 10 mm
48361212	Trial PL circle 12 mm
48361214	Trial PL circle 14 mm
48361216	Trial PL circle 16 mm
48361806	Trial TL circle 6 mm
48361808	Trial TL circle 8 mm
48361810	Trial TL circle 10 mm
48361812	Trial TL circle 12 mm
48361814	Trial TL circle 14 mm
48361816	Trial TL circle 16 mm

Appendix 2:

Rigid container compatibility for device sets

RELIANCE C

Instrument Ref #	Instrument Description
4836000A	TOTAL PL INSTR. CONTAINER 1 LID - RELIANCE
48360003C	RELIANCE C INSERT
48360001A	TOTAL PL INSTR. CONTAINER 2 LID - RELIANCE
48360002A	TOTAL PL INSTR. CONTAINER 3 LID - RELIANCE
48360003	CONTAINER
48365000	PADDLE DISTRATOR
48365020	RELIANCE C PARALLEL PIN DISTRATOR
48365320	FLAT TAMP
48365321	CURVED TAMP
48365110	COBB
48365304	GENERAL TRIAL SIZE 4 MM
48365305	GENERAL TRIAL SIZE 5 MM
48365306	GENERAL TRIAL SIZE 6 MM
48365307	GENERAL TRIAL SIZE 7 MM
48365308	GENERAL TRIAL SIZE 8 MM
48365309	GENERAL TRIAL SIZE 9 MM
48365310	GENERAL TRIAL SIZE 10 MM
48365311	GENERAL TRIAL SIZE 11 MM
48365312	GENERAL TRIAL SIZE 12 MM
48365204	DOUBLE-SIDED RASP SIZE 4 MM
48365205	DOUBLE-SIDED RASP SIZE 5 MM
48365206	DOUBLE-SIDED RASP SIZE 6 MM
48365207	DOUBLE-SIDED RASP SIZE 7 MM
48365208	DOUBLE-SIDED RASP SIZE 8 MM
48365209	DOUBLE-SIDED RASP SIZE 9 MM
48365210	DOUBLE-SIDED RASP SIZE 10 MM
48365211	DOUBLE-SIDED RASP SIZE 11 MM
48365212	DOUBLE-SIDED RASP SIZE 12 MM
874002	SOLIS / RELIANCE C DISTRACTION PIN 10MM
874005	PIN DRIVER SOLIS / RELIANCE C
874007	PIN GUIDE SOLIS / RELIANCE C
874009	SOLIS / RELIANCE C DISTRACTION PIN 15MM

TRIO +

Instrument Ref #	Instrument Description
48905001	SCREW TRAY
48906001	CONNECTOR TRAY
48906300	CONNECTOR TRAY UPPER INSERT
48906200	CONNECTOR TRAY BASE
48906310	CONNECTOR TRAY LID
48905041	FLEXIBLE EXTENDER II
48905022	SELF HOLDING PEDICULAR SCREWDRIVER
48906100	COMBINED SCREWDRIVER
48905046	FLEXIBLE EXTENDER III
48906041	PARALLEL DISTRATOR
48906081	ANTI TORQUE KEY II
48906085	CONNECTOR DEROTATION KEY
48906210	CONNECTOR INTERMEDIATE TRAY
48905115	SPONDYLOLISTHESIS REDUCTION INSTRUMENT

VLIFT

Instrument Ref #	Instrument Description
48300200	VLIFT EXPANDER
48300210	VLIFT INSIDE SAHFT
48300300	VLIFT SCREWDRIVER
48300400	VLIFT END CAP REMOVER
48300001	VLIFT CONTAINER
48300518	VLIFT END CAP IMPACTOR 18 DIA.
48300522	VLIFT ENDCAP IMPACTOR 22 DIA.
48300450	VLIFT END CAP REMOVER

Appendix 2:

Rigid container compatibility for device sets

Instrument Ref #	Instrument Description
48366203	RELIANCE ALIF KERRISON PUNCH 3 MM
48366205	RELIANCE ALIF KERRISON PUNCH 5 MM
48366214	RELIANCE ALIF PITUITARY RONGEUR, STRAIGHT, 4 MM
48366218	RELIANCE ALIF PITUITARY RONGEUR, STRAIGHT, 8 MM
48366224	RELIANCE ALIF PITUITARY RONGEUR, DOWN, 4 MM
48366228	RELIANCE ALIF PITUITARY RONGEUR, DOWN, 8 MM
48366234	RELIANCE ALIF PITUITARY RONGEUR, UP, 4 MM
48366238	RELIANCE ALIF PITUITARY RONGEUR, UP, 8 MM
48366240	RELIANCE ALIF 8 MM DOUBLE ACTION RONGEUR
48366220	RELIANCE ALIF COBB, SMALL
48366225	RELIANCE ALIF COBB, LARGE
48366212	RELIANCE ALIF OSTEOTOME 12 MM
48366300	RELIANCE ALIF T HANDLE
48366406	RELIANCE ALIF CUP CURRETTE STRAIGHT, SMALL
48366409	RELIANCE ALIF CUP CURRETTE STRAIGHT, LARGE
48366416	RELIANCE ALIF CUP CURRETTE UP, SMALL
48366419	RELIANCE ALIF CUP CURRETTE UP, LARGE
48366420	RELIANCE ALIF UPWARD BEND RING CURRETTE
48366430	RELIANCE ALIF BALL PROBE/ NERVE HOOK ASSEMBLY
48366508	RELIANCE ALIF YO-YO TRIALS, 8 MM
48366509	RELIANCE ALIF YO-YO TRIALS, 9 MM
48366510	RELIANCE ALIF YO-YO TRIALS, 10 MM
48366511	RELIANCE ALIF YO-YO TRIALS, 11 MM
48366512	RELIANCE ALIF YO-YO TRIALS, 12 MM
48366513	RELIANCE ALIF YO-YO TRIALS, 13 MM
48366514	RELIANCE ALIF YO-YO TRIALS, 14 MM
48366515	RELIANCE ALIF YO-YO TRIALS, 15 MM
48366516	RELIANCE ALIF YO-YO TRIALS, 16 MM
48366517	RELIANCE ALIF YO-YO TRIALS, 17 MM
48366518	RELIANCE ALIF YO-YO TRIALS, 18 MM
48366519	RELIANCE ALIF YO-YO TRIALS, 19 MM
48366520	RELIANCE ALIF YO-YO TRIALS, 20 MM
48366530	RELIANCE ALIF TAMP
48366111	RELIANCE ALIF ENDPLATE TIP MEDIUM RIGHT
48366112	RELIANCE ALIF ENDPLATE TIP MEDIUM LEFT
48366113	RELIANCE ALIF ENDPLATE TIP LARGE RIGHT
48366114	RELIANCE ALIF ENDPLATE TIP LARGE LEFT
48361018	RELIANCE ALIF PADDLE DISTRACTOR 18 MM
48361020	RELIANCE ALIF PADDLE DISTRACTOR 20 MM
48366001	RELIANCE ALIF BONE/DISC REMOVAL CONTAINER
48366002	RELIANCE ALIF ENDPLATE PREP / TRIALING CONTAINER
48366003	RELIANCE ALIF DISTRACTION GENERAL CONTAINER
48361108	8 MM DISTRACTION PADDLE LORDOSED
48361109	9 MM DISTRACTION PADDLE LORDOSED
48361110	10 MM DISTRACTION PADDLE LORDOSED

RELIANCE ALIF

Instrument Ref #	Instrument Description
48361111	11 MM DISTRACTION PADDLE LORDOSED
48361112	12 MM DISTRACTION PADDLE LORDOSED
48361113	13 MM DISTRACTION PADDLE LORDOSED
48361114	14 MM DISTRACTION PADDLE LORDOSED
48361115	15 MM DISTRACTION PADDLE LORDOSED
48361116	16 MM DISTRACTION PADDLE LORDOSED
48361118	18 MM DISTRACTION PADDLE LORDOSED
48361120	20 MM DISTRACTION PADDLE LORDOSED
48361150	DISECTOMY DISTRACTOR
48361152	DISTRACTOR TIP STRAIGHT
48361153	DISTRACTOR TIP PADDLE
48361154	DISTRACTOR TIP OFFSET LEFT
48361155	DISTRACTOR TIP OFFSET RIGHT
48361156	MEDIUM DISTRACTOR TIP INSERTION LEFT
48361157	MEDIUM DISTRACTOR TIP INSERTION RIGHT
48361158	LARGE DISTRACTOR TIP INSERTION LEFT
48361159	LARGE DISTRACTOR TIP INSERTION RIGHT
48366003A	DISTRACTION TRAY INSERT

RELIANCE ALIF

Instrument Ref #	Instrument Description
48041330	XIA REDUCTION PA SCREWDRIVER
48041340	XIA REDUCTION MA SCREWDRIVER
48040017	XIA REDUCTION SS TRAY
48040018	XIA REDUCTION Ti TRAY
48047070	XIA REDUCUTION 5 MM BLOCKER INSERTER
48041342	XIA REDUCTION THREADED SHEATH MONOAXIAL
48041332	XIA REDUCTION THREADED SHEATH POLYAXIAL
48041333	XIA REDUCTION TISSUE PROTECTION SLEEVE POLYAXIAL
48041343	XIA REDUCTION TISSUE PROTECTION SLEEVE MONOAXIAL

XIA REDUCTION OR XIA LONG ARM

Appendix 2:

Rigid container compatibility for device sets

MANTIS SPINAL SYSTEM

Instrument Ref #	Instrument Description
48280101	BLUNT DILATOR
48280102	HOLLOW DILATOR
48280104	HOLLOW CANNULA
48281035	RETRACTOR BLADE SIZE 1 (3 - 5 CM)
48281057	RETRACTOR BLADE SIZE 2 (5 - 7 CM)
48281079	RETRACTOR BLADE SIZE 3 (7 - 9 CM)
48281911	RETRACTOR BLADE SIZE 4 (9 - 11 CM)
48281113	RETRACTOR BLADE SIZE 5 (11 -13 CM)
48281200	SLIDING RING
48281310	MANTIS SCREWDRIVER
48284030	ROD CONTOURING SHAFT
48284035	ROD CONTOURING LINKAGE
48284050	ROD INSERTER (now obsolete)
48284051	ROD INSERTER INNER SHAFT SUBASSEMBLY (now obsolete)
48284080	COUNTER TORQUE TUBE
48280000	SCREW INSERTION TRAY
48280001	SCREW INSERTION TRAY
48280001A	SCREW INSERTION BASE
48280001B	SCREW INSERT
48280001C	RETRACTOR BLADE INSERT
48280001D	DILATOR INSERT
48280001E	SCREW INSERTION LID
48280002	FIXATION TRAY
48280002A	FIXATION BASE
48280002B	FIXATION MIDDLE INSERT
48280002C	FIXATION TOP INSERT
48280002D	FIXATION LID
48280003	AUXILIARY TRAY
48280005	FIXATION TRAY
48281164	CANNULATED MODULAR AWL
48281165	CANNULATED MODULAR TAP 5.5 MM
48281166	CANNULATED MODULAR TAP 6.5 MM
48281167	CANNULATED MODULAR TAP 7.5 MM
48281168	CANNULATED MODULAR TAP 8.5 MM
48287033	MANTIS POLY ADJUSTMENT DRIVER
48281315	MANTIS TAP SLEEVE
48284010	FASCIA SCISSORS
48284057	TISSUE WAND
48284055	ROD GRIPPER
48284070	DISTRACTOR PLIERS
48284075	COMPRESSOR PLIERS
48284078	COMPRESSOR/ DISTRACTOR HINGE
48284077	COMPRESSOR/ DISTRACTOR SHAFT
48284077	ROD INSERTER INNER SHAFT WITH LASER MARKING
48280105	SLIM DILATOR

MANTIS SPINAL SYSTEM

Instrument Ref #	Instrument Description
48280106	DILATOR 2
48280107	DILATOR 3
48282035	REDUCTION BLADE SIZE 1 (3 - 5 cm)
48282057	REDUCTION BLADE SIZE 2 (5 - 7 cm)
48282079	REDUCTION BLADE SIZE 3 (7 - 9 cm)
48282911	REDUCTION BLADE SIZE 4 (9 - 11 cm)
48282113	REDUCTION BLADE SIZE 5 (11 -13 cm)
48284036	EXTENDED ROD CONTOURING LINKAGE
48281161	CANNULATED MODULAR TAP 4.5 mm
48280001F	SLIM DILATOR TRAY
48280004	AUXILIARY TRAY
48280002E	FIXATION BOX - LOWER INSERT
48280002F	FIXATION BOX - UPPER INSERT
48284065	Rod Persuader
48280075	Blade Exchanger Sleeve
48280076	Blade Exchanger Insert
48280077	Blade Exchanger Insert, with Rod
48280078	Blade Exchanger Guide
48280079	Blade Exchanger Pusher
48287008	Blocker Inserter
48284066	Persuader Shaft
48084052	Inner Shaft Roder Inserter
48084053	Rod Inserter Assembly
48289100	Tab Breaker
48289035	Retractor Redux Blade Size 1
48289057	Retractor Redux Blade Size 2
48289079	Retractor Redux Blade Size 3
48289911	Retractor Redux Blade Size 4
48289113	Retractor Redux Blade Size 5
48289030	Contouring Shaft
48289310	Screwdriver Shaft
4828933	Screwdriver Inner Shaft
48289733	Poly Adjustment Driver
48289480	Counter Torque Tube
48287028	Torque Wrench
48281201	Slim Ring
48289078	Compression Hinge
48289077	Compression Shaft
48289305	Round-Handle non-Ratchet
48289300	Round-Handle Ratchet
48289205	T-Handle Non-Ratchet
48289200	T-Handle Ratchet
48289001	Mantis Redux Container
48281111	Mantis Redux Reduction Helper

Appendix 2:

Rigid container compatibility for device sets

MANTIS SPINAL SYSTEM	Instrument Ref #	Instrument Description
	48480001	Adjustable Rod Inserter
	48480111	110 degree Rod Inserter
	48480091	90 degree Rod Inserter
	48480112	Rod Inserter Inner Shaft

BONE INSTRUMENTS	Instrument Ref #	Instrument Description
	48480001	Adjustable Rod Inserter
	48480111	110 degree Rod Inserter
	48480091	90 degree Rod Inserter
	48480112	Rod Inserter Inner Shaft

RADIUS INSTRUMENTS	Instrument Ref #	Instrument Description
	486619400	SCREW INSERTION TRAY
	486619440	RADIUS ANTERIOR TRAY 1
	486619445	RADIUS ANTERIOR TRAY 2
	486619450	RADIUS ILIAC TRAY
	486619470	RADIUS CUSTOM TRAY
	48661900	PEDICLE AWL
	486619001	PEDICLE AWL CONICAL
	486619002	PEDICLE AWL CONICAL WITH STOP
	486619005	BLUNT PROBE STRAIGHT
	486619010	BLUNT PROBE CURVED
	486619030	SHARP PROBE STRAIGHT
	486619035	SHARP PROBE CURVED
	486619025	BLUNT PROBE SHAFT GROOVED
	486619020	BLUNT PROBE SHAFT
	486619040	PEDICLE TESTER
	486619041	PEDICLE TESTER MALLEABLE
	486619043	PEDICLE TESTER FLEXIBLE
	486619050	DRILL SLEEVE
	486619051	8.75 MM, 9.75 MM DRILL SLEEVE
	486619055	4.75 MM TAP
	486619056	5.75 MM TAP
	486619057	6.75 MM TAP
	486619058	7.75 MM TAP
	486619095	MA SCREW INSERTER
	486619110	STANDARD SCREW INSERTER
	486619100	MA ADJUSTMENT TOOL
	486619120	3.5 MM HEX. SHAFT
	486619065	CANNULATED STANDARD RATCHETING HANDLE
	486619070	CANNULATED T-RATCHETING HANDLE
	486619075	CANNULATED STANDARD HANDLE
	486619080	CANNULATED T-HANDLE
	486619410	FIXATION TRAY

RADIUS INSTRUMENTS	Instrument Ref #	Instrument Description
	486619170	ROD BENDER
	486619145	ROD INSERTION SCISSOR
	486619146	ROD INSERTION FORCEPS
	486619175	ROD GRIPPER
	486619180	ROD PUSHER
	486619185	ROCKER
	486619186	LOCKING CAP MAGAZINE
	486619190	ROD PURSUADER
	486619210	CAPSPIN
	486619215	INITIAL INSERTER
	486619220	INITIAL INSERTER TUBE
	486619315	RADIUS 8.75 MM TAP
	486619320	RADIUS 9.75 MM TAP
	486619380	UNDERROD DISTRACTOR
	486619385	SCOLIOSIS DISTRACTOR
	486619390	UNDERROD COMPRESSOR
	486619395	SCOLIOSIS COMPRESSOR
	486619235	COUNTER TORQUE TUBE
	486619240	FINAL DRIVER
	486619420	THORACIC INSERTION TRAY
	486619125	PEDICLE FINDER
	486619130	LAMINA AND TRANSVERSE PROCESS FINDER
	486619165	HOOK HOLDER
	486619166	HOOK HOLDER STRAIGHT
	486619135	HOOK IMPACTOR
	486619138	HOOK IMPACTOR BLOCKER
	486619150	IN SITU BENDER LEFT
	486619155	IN SITU BENDER RIGHT
	486619160	4.5 MM COMBINATION WRENCH
	486619430	CROSS CONNECTOR TRAY
	486619245	CROSS CONNECTOR CLOSER
	486619250	CROSS CONNECTOR PLUG DRIVER
	486619251	ANTERIO CROSS CONNECTOR PLUG DRIVER
	486619255	CROSS CONNECTOR BENDER LEFT
	486619260	CROSS CONNECTOR BENDER RIGHT
	486619265	ANTERIOR AWL
	486619270	SINGLE STAPLE IMPACTOR
	486619280	CROSS CONNECTOR CALIPER
	486619460	CANNULATED TRAY
486619045	K-WIRE SHARP	
486619046	K-WIRE BLUNT	
486619054	K-WIRE GUIDE TUBE	
486619345	PEDICLE AWL CANNULATED	
486619350	5.75 MM CANNULATED TAP	
486619355	6.75 MM CANNULATED TAP	

Appendix 2:

Rigid container compatibility for device sets

RADIUS INSTRUMENTS	Instrument Ref #	Instrument Description
	486619360	7.75 MM CANNULATED TAP
	486619370	SLAP HAMMER
	486619090	MA SCREW INSERTER CANNULATED
	486619085	BLUNT PROBE SHAFT T-HANDLE
	48366005	ANTERIOR DISTRACTOR INSERTER CONTAINER
	486619060	5.75 mm Rapid Tap
	486619061	6.75 mm Rapid Tap
	486619062	7.75 mm Rapid Tap
	486619063	8.75 mm Rapid Tap
486619064	9.75 mm Rapid Tap	
	4.0 mm Tap	
486619480	Rapid Container	
486619481	Rapid Screw Tray Insert	

ZERO PROFILE ACP SYSTEM	Instrument Ref #	Instrument Description
	48513000	CONTAINER
	48513010	PLATE HOLDER
	48513011	PLATE BENDER
	48513015	FIXED ALL-IN-ONE GUIDE
	48513016	VARIABLE ALL-IN-ONE GUIDE
	48513012	CURVED GRAFT IMPACTOR
	48513013	FLAT GRAFT IMPACTOR

XIA 3 SPINAL SYSTEM	Instrument Ref #	Instrument Description
	48237111	AWL
	48237024	CURVED BLUNT PROBE
	48237055	THORACI PEDICLE PROBE
	48237003	PEDICLE FEELER, STIFF
	48237060	PEDICLE FEELER, MALLEABLE
	48237059	PEDICLE FEELER, MEDIUM
	48230030	3.0 MM DIA. MODULAR TAP
	48230035	3.5 MM DIA. MODULAR TAP
	48230040	4.0 MM DIA. MODULAR TAP
	48230045	4.5 MM DIA. MODULAR TAP
	48230050	5.0 MM DIA. MODULAR TAP
	48230055	5.5 MM DIA. MODULAR TAP
	48230065	6.5 MM DIA. MODULAR TAP
	48230075	7.5 MM DIA. MODULAR TAP
	48231020	STANDARD HOOK HOLDER
	48231170	STRAIGHT HOOK HOLDER
	48231040	LATERAL HOOK HOLDER
	48237029	HOOK IMPACTOR
	48230110	LAMAINAR HOOK PREPARER, NARROW
	48237021	LAMINA HOOK PREPARER

XIA 3 SPINAL SYSTEM	Instrument Ref #	Instrument Description
	48237025	PEDICLE HOOK PREPARER
	48231330	POLYAXIAL SCREWDRIVER
	48231311	POLYAXIAL SCREWDRIVER SHAFT
	48231320	MONOAXIAL SCREWDRIVER
	48231321	MONOAXIAL SCREWDRIVER SHAFT
	48237033	POLY ADJUSTMENT DRIVER
	48237032	MONODRIVER
	48230121	3.5 MM HEX. DRIVER
	48237008	UNIVERSAL TIGHTENER
	48230140	ROD INSERTION FORCEPS
	48230180	LEFT CORONAL PLANE BENDER
	48230190	RIGHT CORONAL PLANE BENDER
	48237011L	LEFT IN-SITU BENDER
	48237011R	RIGHT IN-SITU BENDER
	48237010	FRENCH BENDER
	48237016	PERSUADER
	48237017	HEX. DRIVE, T-HANDLE
	48237015	ONE HANDED PERSUADER
	48237018	ROD FORK
	48237019	ROD PUSHER
	48237056	ROD ROTATION KEY
	48230100	VICE GRIP
	48236100	SMALL COMPRESSOR
	48236101	LARGE COMPRESSOR
	4823600	SMALL DISTRACTOR
	48236001	LARGE DISTRACTOR
	48237109	INSERTER TUBE
	48237026	ANTI-TORQUE KEY
	48237028	TORQUE WRENCH
	48230120	CROSS CONNECTOR INSERTER
	48230122	8.0 MM HEX DRIVER
	48230123	CROSS CONNECTOR MEASURING DEVICE
	48231302	ROUND HANDLE, RATCHET
	48231202	T-HANDLE, RATCHET
	48231201	T-HANDLE, QUICK CONNECT
	48231301	ROUND HANDLE, QUICK CONNECT
	48231330S	SLEEVE FOR POLYAXIAL SCREWDRIVER
	48230180S	BALL JOINT
	48230001	DEGENERATIVE IMPLANT TRAY
	48230002	DEGENERATIVE INSTRUMENT TRAY
	48230003	COMPLEX SPINE SCREW TRAY
	48230004	COMPLEX SPINE INSTRUMENT TRAY
	48230005	COMPLEX SPINE HOOKS & INSTRUMENT TRAY
48230006	ROD & CROSS CONNECTOR TRAY	
48230011	DEGENERATIVE IMPLANT TRAY VER. B	

Appendix 2:

Rigid container compatibility for device sets

XIA 3 SPINAL SYSTEM

Instrument Ref #	Instrument Description
48230012	DEGENERATIVE INSTRUMENT TRAY VER. B
48237062	STRAIGHT BLUNT PROBE
48237061	DOUBLE ENDED FEELER
48231140	ROD GRIPPER
48237091	MODULAR MONODRIVER SHAFT
48237081	PEDICLE MARKERS (SET OF 6)
48230085	MODULAR 8.5 TAP
48230095	MODULAR 9.5 TAP
48230105	MODULAR 10.5 TAP
48237065	DUAL HEADED UNIVERSAL TIGHTENER
48237092	DOUBLE ENDED 3.5 SETSCREW INSERTER
48231350	R-R CONNECTOR HOLDER
48237080	PEDICLE MARKERS INSERTER
48237093	SOFT TISSUE RETRACTOR
48231313	SELF-HOLDING SCREWDRIVER SHAFT
48230191L	TUBE BENDERS, LEFT
48230191R	TUBE BENDERS, RIGHT
48238400	TABLE TOP ROD CUTTER
48238400S	TABLE TOP ROD CUTTER, STAND
48237067	SUK DEROTATOR
48237077	SUK TUBE 2-PC
48237087	SUK TUBE 1-PC
48237097	SUK T-HANDLE
48231314	ILLIAC SCREWDRIVER, ONE-PC
48231315	ILLIAC SCREWDRIVER, TWO-PC
48231326	ILLIAC SCREWDRIVER, THREE-PC
48230008	XIA 3 ILLIOS CONTAINER
48230020	XIA 3 OUTLIER IMPLANT CONTAINER
48230015	XIA 3 SUK DVR INSTRUMENT CONTAINER
48230010	XIA 3 OUTLIER INSTRUMENT CONTAINER
482331330	UNIPLANAR REDUCTION SCREWDRIVER
482339110	REDUCTION SCEW TAB REMOVER
48230013	UNIPLANAR CONTAINER
48237068	SHORT SUK DVR CLAMPS
48237069	LONG SUK DVR CLAMPS
48237078	SUK DVR REDUCTION TUBE
48237079	REDUCTION CLIP
48235001	LATERAL PERSUADER

XIA ELEGANCE INSTRUMENTS (modified Xia 3 instruments)

Instrument Ref #	Instrument Description
482391320S	SHORT MONAXIAL SCREWDRIVER
482391330S	SHORT POLYAXIAL SCREWDRIVER
482391321S	SHORT MONOAXIAL SCREWDRIVER SHAFT
482391311S	SHORT XIA 3 POLYAXIAL SCREWDRIVER SHAFT
482391312S	SHORT XIA II POLYAXIAL SCREWDRIVER SHAFT
482397008	SHORT UNIVERSAL TIGHTENER
482397016	SHORT PERSUADER
482391320L	LONG MONAXIAL SCREWDRIVER
482391330L	LONG POLYAXIAL SCREWDRIVER
482391321L	LONG MONOAXIAL SCREWDRIVER SHAFT
482391311L	LONG XIA 3 POLYAXIAL SCREWDRIVER SHAFT
482397004	LOW PROFILE SCREWDRIVER
482397009	LOW PROFILE SCREWDRIVER SHAFT
482397010	LOW PROFILE SCREWDRIVER SHAFT ADAPTOR
482397002	SACRAL AWL
482397001	ADJUSTABLE CURETTE PROBE
482397032	SHORT MONODRIVER
482397026	SHORT ANTI-TORQUE KEY
182397028	SHORT TORQUE WRENCH
482397109	SHORT INSERTER TUBE
482397005	SMALL ROUND HANDLE, RATCHET
482397006	SMALL ROUND HANDLE
482397007	JACOBS CHUCK HANDLE
482390000	TRAY

Appendix 2:

Rigid container compatibility for device sets

Instrument Ref #	Instrument Description
48366005	ANTERIOR DISTRACTOR/ INSERTER CONTAINER
48329000	AVS AS INSERTER
48361220	INTEGRATED DISTRACTOR INSERTER
48361223	IMPLANT BLOCKER
48361224	IMPLANT BLOCKER
48361225	IMPLANT BLOCKER
48361226	IMPLANT BLOCKER
48361227	IMPLANT BLOCKER
48361228	IMPLANT BLOCKER
48361238	POSTERIOR LONGITUDINAL LIGAMENT (PLL) STRIPPER
48361234	TRIAL HANDLE
48361235	RASP HANDLE
48361236	IMPLANT REMOVER
48237093	SOFT TISSUE RETRACTOR
48231313	SELF-HOLDING SCREWDRIVER SHAFT
48230191L	TUBE BENDERS, LEFT
48230191R	TUBE BENDERS, RIGHT
48238400	TABLE TOP ROD CUTTER
48238400S	TABLE TOP ROD CUTTER, STAND
48361240	
48361241	
48361242	
48361243	
48361244	
48361245	AL TRIAL 22 X 28 MM 10 - 20 MM HEIGHT
48361246	
48361247	
48361248	
48361249	
48361250	
48361251	
48361252	
48361253	
48361254	
48361255	
48361256	
48361257	AL TRIAL 28 X 33 MM 10 -20 MM HEIGHT
48361258	
48361259	
48361260	
48361261	
48361262	
48361263	

ANTERIOR DISTRACTION INSTRUMENTS

Instrument Ref #	Instrument Description
48361264	AL RASP 22 X 28 10 MM HEIGHT
48361265	AL RASP 22 X 28 12 MM HEIGHT
48361266	AL RASP 22 X 28 14 MM HEIGHT
48361267	AL RASP 22 X 28 16 MM HEIGHT
48361268	AL RASP 22 X 28 18 MM HEIGHT
48361269	AL RASP 22 X 28 20 MM HEIGHT
48361270	AL RASP 28 X 33 10 MM HEIGHT
48361271	AL RASP 28 X 33 12 MM HEIGHT
48361272	AL RASP 28 X 33 14 MM HEIGHT
48361273	AL RASP 28 X 33 16 MM HEIGHT
48361274	AL RASP 28 X 33 18 MM HEIGHT
48361275	AL RASP 28 X 33 20 MM HEIGHT
48361277	SURGICAL KNIFE
48361278	MALLET

ANTERIOR DISTRACTION INSTRUMENTS

Instrument Ref #	Instrument Description
48031230	GAUGE DISK ASSEMBLY
48031260	DRILL
48031220	DEPTH GAUGE PROBE
48031150	AIOG ALIGNMENT ROD
48031210	AWL GUIDE WELDMENT
48031052	LONG FIXATION PIN
48031050	SHORT FIXATION PIN
48031600	SIZER ANTERIOR
48031300	SCREWDRIVER
48031280	TAP
48031240	FEELER PROBE
48031200	AWL WELDMENT
48031100	ALL IN ONE GUIDE
48031000	FIXATION PIN INSERTER
48031500	ANTI TORQUE KEY
48031400	TORQUE WRENCH
48031450	TORGUE WRENCH TIP
48031101	LOCKING GUIDE EXPANDER
48030000	INSTRUMENTS TRAY BASE
48030001	INSTRUMENTS LOWER INSERT
48030002	INSTRUMENTS UPPER INSERT
48030003	INSTRUMENTS TRAY LID
48030005	IMPLANTS TRAY BASE
48030006	ANTERIOR PLATES INSERT
48030007	TUMOR/TRAUMA PLATES INSERT

THOR INSTRUMENTS

Appendix 2:

Rigid container compatibility for device sets

AVIATOR INSTRUMENTS	Instrument Ref #	Instrument Description
	48770500	Single Barrel Drill Guide - Fixed
	48770800	Aviator Retaining Screw Driver
	48770805	Aviator Solid Screwdriver Shaft
	48770905B	Aviator Draw Rod
	48770410	Aviator Temporary Fixation Pin
	48770655	Aviator Punch Awl
	48770655F	Punch Awl Sleeve, Fixed
	48770655V	Aviator Variable Punch Awl Sleeve
	48770600	Aviator Quick Release Handle
	48770905	Aviator Rescue Driver
	48770200	Aviator Plate Bender
	48770820	Aviator Quick Turn Screwdriver
	48770505	Aviator Variable Single Barrel Drill Guide
	48771000	AVIATOR ACP CONTAINER
	48771000A	AVIATOR SCREW RACK
48771000B	AVIATOR PLATE RACK	
48771000C	AVIATOR EXTRA PLATE RACK	
48770610	Aviator Drill Bits, 10mm	
48770612	Aviator Drill Bits, 12mm	
48770614	Aviator Drill Bits, 14mm	
48770616	Aviator Drill Bits, 16mm	

TRIO TRAUMA INSTRUMENT	Instrument Ref #	Instrument Description
	47113022	TRIO TRAUMA ROD INSERTER
	47113045	TRIO TRAUMA INSERTER INNER SHAFT
	47113020	TRIO TRAUMA REDUCTION HANDLE
	47116075	TRIO TRAUMA CONNECTOR HEX SOCKET FOR TORQUE WRENCH 3.5 MM
	47113130	TRIO TRAUMA TAP SLEEVE
	47113315	TRIO TRAUMA SCREW SLEEVE
47113340	TRIO TRAUMA SCREW REMOVER	

AVS NAVIGATOR INSTRUMENTS	Instrument Ref #	Instrument Description
	48392206	AVS Navigator 6mm Trial
	48392207	AVS Navigator 7mm Trial
	48392208	AVS Navigator 8mm Trial
	48392209	AVS Navigator 9mm Trial
	48392210	AVS Navigator 10mm Trial
	48392211	AVS Navigator 11mm Trial
	48392212	AVS Navigator 12mm Trial
	48392213	AVS Navigator 13mm Trial
	48392214	AVS Navigator 14mm Trial
	48392215	AVS Navigator 15mm Trial
	48393003	AVS Navigator 26mm Graft Block
	48393013	AVS Navigator 31mm Graft Block
	48393004	AVS Navigator Graft Impactor
	48393007	AVS Navigator Footed Tamp
	48393008	AVS Navigator Straight Tamp
	48393010	AVS Navigator Container
	48393011	AVS Navigator Dynamic Disc Space Distractor Container
	48394005	AVS Navigator DYNAMIC DISTRACTOR WITH HANDLE
	48394006	AVS Navigator EXTENSION HANDLE FOR DYNAMIC DISTRACTOR

Appendix 2:

Rigid container compatibility for device sets

AVS Anchor-C INSTRUMENTS

Instrument Ref #	Instrument Description
48328660	14x16x6mm 0° Trial
48328664	14x16x6mm 4° Trial
48328668	14x16x6mm 8° Trial
48328670	14x16x7mm 0° Trial
48328674	14x16x7mm 4° Trial
48328678	14x16x7mm 8° Trial
48328680	14x16x8mm 0° Trial
48328684	14x16x8mm 4° Trial
48328688	14x16x8mm 8° Trial
48328690	14x16x9mm 0° Trial
48328694	14x16x9mm 4° Trial
48328698	14x16x9mm 8° Trial
48328600	14x16x10mm 0° Trial
48328604	14x16x10mm 4° Trial
48328608	14x16x10mm 8° Trial
48328610	14x16x11mm 0° Trial
48328614	14x16x11mm 4° Trial
48328618	14x16x11mm 8° Trial
48328620	14x16x12mm 0° Trial
48328624	14x16x12mm 4° Trial
48328628	14x16x12mm 8° Trial
48328760	12x14x6mm 0° Trial
48328764	12x14x6mm 4° Trial
48328768	12x14x6mm 8° Trial
48328770	12x14x7mm 0° Trial
48328774	12x14x7mm 4° Trial
48328778	12x14x7mm 8° Trial
48328780	12x14x8mm 0° Trial
48328784	12x14x8mm 4° Trial
48328788	12x14x8mm 8° Trial
48328790	12x14x9mm 0° Trial
48328794	12x14x9mm 4° Trial
48328798	12x14x9mm 8° Trial
48328700	12x14x10mm 0° Trial
48328704	12x14x10mm 4° Trial
48328708	12x14x10mm 8° Trial
48328710	12x14x11mm 0° Trial
48328714	12x14x11mm 4° Trial
48328718	12x14x11mm 8° Trial
48328720	12x14x12mm 0° Trial
48328724	12x14x12mm 4° Trial
48328728	12x14x12mm 8° Trial
48328050	Quick release handle
48328200	Straight Awl
48328225	Angled Awl

AVS Anchor-C INSTRUMENTS

Instrument Ref #	Instrument Description
48328908	8mm Drill Bit
48328910	10mm Drill Bit
48328912	12mm Drill Bit
48328808	8mm Flexible Drill Bit
48328810	10mm Flexible Drill Bit
48328812	12mm Flexible Drill Bit
48328500	Straight Screwdriver
48328550	Flexible Screwdriver
48328625	Screw Extractor
48328625AN	Screw Extractor Draw Rod
48328625AR	Screw Extractor Draw Rod
48328725	Pin Guide Distractor
48328001	Screw Caddy
48328002	Implant Caddy
48328000	Container

ESCALATE LIMINOPLASTY INSTRUMENTS

Instrument Ref #	Instrument Description
48570000	Container
48570000A	Screw Rack
48570000B	Plate Caddy
48570000C	Outer Case
48570000D	Inner Tray
48570100	Lamina Elevator
48570102	Awl
48570101	Plate Holder
48570114	1.2x4mm Drill Bit
48570116	1.2x6mm Drill Bit
48570118	1.2x8mm Drill Bit
48570103	Expander
48570107	Collapser Block
48570104	Screwdriver

Appendix 2:

Rigid container compatibility for device sets

AVS Anchor-L LUMBAR CAGE SYSTEM INSTRUMENTS

Instrument Ref #	Instrument Description
48999110	ModuLar Rigid Awl
48994110	Modular Flexible Awl
48999150	Modular Rigid Ø5mm Drill
48994150	Modular Flexible Ø5mm Drill
48999250	Modular Rigid Ø5mm Tap
48994250	Modular Flexible Ø5mm Tap
48994003	Modular 3.5 mm Hex Round Tip Flexible Screwdriver
48999003	Modular 3.5 mm Hex Round Tip RIGID Screwdriver
48990005	90 Deg. Angled Screwdriver
48992110	AIOG Locking Screw
48992000	AIOG Holder
48992115	Small Rigid Screwdriver
48999000	Modular Rigid Screwdriver
48994000	Modular Flexible Screwdriver
48997020	Plate Feeler
48998200	6mm Single Side Straight Rasp
48998300	6mm Single Side Angled Rasp Up
48998400	6mm Single Side Angled Rasp Down
48999010	Graft Block
48999020	Graft Impactor
48992104	10x22x30x4° Solid Trial
48992108	10x22x30x8° Solid Trial
48992102	10x22x30x12° Solid Trial
48992124	12x22x30x4° Solid Trial
48992128	12x22x30x8° Solid Trial
48992122	12x22x30x12° Solid Trial
48992144	14x22x30x4° Solid Trial
48992148	14x22x30x8° Solid Trial
48992142	14x22x30x12° Solid Trial
48992164	16x22x30x4° Solid Trial
48992168	16x22x30x8° Solid Trial
48992162	16x22x30x12° Solid Trial
48993104	10x25x35x4° Solid Trial
48993108	10x25x35x8° Solid Trial
48993102	10x25x35x12° Solid Trial
48993124	12x25x35x4° Solid Trial
48993128	12x25x35x8° Solid Trial
48993122	12x25x35x12° Solid Trial
48993144	14x25x35x4° Solid Trial
48993148	14x25x35x8° Solid Trial
48993142	14x25x35x12° Solid Trial
48993164	16x25x35x4° Solid Trial
48993168	16x25x35x8° Solid Trial
48993162	16x25x35x12° Solid Trial
48998148	14x28x40x8° Solid Trial

AVS Anchor-L LUMBAR CAGE SYSTEM INSTRUMENTS

Instrument Ref #	Instrument Description
48998142	14x28x40x12° Solid Trial
48998164	16x28x40x4° Solid Trial
48998168	16x28x40x8° Solid Trial
48998162	16x28x40x12° Solid Trial
48998184	18x28x40x4° Solid Trial
48998188	18x28x40x8° Solid Trial
48998182	18x28x40x12° Solid Trial
48993186	18x25x35x16° Solid Trial
48993204	20x25x35x4° Solid Trial
48993208	20x25x35x8° Solid Trial
48993202	20x25x35x12° Solid Trial
48993206	20x25x35x16° Solid Trial
48999102	10x22x30x12° Marking Guide
48990102	10x25x35x12° Marking Guide
48999126	12x22x30x16° Marking Guide
48999146	14x22x30x16° Marking Guide
48990126	12x25x35x16° Marking Guide
48990146	14x25x35x16° Marking Guide
48991014	10mm-14mm Trial Stop
48999002	Modular U-Joint Driver
48990006	90°Angled Screwdriver Gear Cover

Appendix 2:

Rigid container compatibility for device sets

ES2 SPINAL SYSTEM INSTRUMENTS

Instrument Ref #	Instrument Description
48280006	Implant Tray
48280006A	Implant Tray Lid
48280006B	Implant Tray Top Insert
48280006C	Implant Tray Middle Insert
48280006D	Straight Rod Caddy
48280006E	Implant Tray Base
48280006F	Short Blade Screw Caddy
48280006G	Long Blade Screw Caddy
48280006H	Ring Caddy with Lid
48280006I	Blocker Caddy with Lid
48280006J	Crew Caddy Stand
48280006K	Rad Rod Caddy
48280007	Instrument Tray 1
48280007A	Instrument Tray 1 Lid
48280007B	Instrument Tray 1 Top Insert
48280007C	Instrument Tray 1 Middle Insert
48280007D	Instrument Tray 1 Base
48280008	Instrument Tray 2
48280008A	Instrument Tray 2 Lid
48280008B	Instrument Tray 2 Insert
48280008C	Instrument Tray 2 Base
48280009	Outlier Implant Tray
48280009A	Outlier Implant Tray Lid
48280009B	Outlier Implant Tray Base
48280080	Counter Torque Tube
48280081	Torque Wrench
48280082	Compression and Distraction Shaft
48280083	Compression and Distraction Hinge
48280085	Blocker Inserter
48280086	Poly Adjustment Driver
48280087	French Bender
48280090	90° Rod Inserter
48280091	Dilator 3, RADEL
48280092	Dilator 1, Recovery System
48280093	Recovery Guide
48280095	Inner Shaft, Recovery System
48280096	Outer Sleeve, Recovery System
48280097	Hex-End T-Handle
48280098	Dilator 2, Recovery System
48280099	Threaded Recovery System
48280100	Tap Sleeve
48280110	110° Rod Inserter
48280120	Slap Hammer
48280155	Ø5.5mm Cannulated Modular Tap
48280165	Ø6.5mm Cannulated Modular Tap

Instrument Ref #	Instrument Description
48280175	Ø7.5mm Cannulated Modular Tap
48280185	Ø8.5mm Cannulated Modular Tap
48280200	Cannulated Modular Awl
48280310	Poly Adjustment Screwdriver
48280311	Polyaxial Screwdriver Shaft
48281000	Dilator 1, Black
48282000	Dilator 2, RADEL
48282100	100mm Rod Template
48282200	200mm Rod Template

Instrument Ref #	Instrument Description
48590135	35 mm Trial
48590140	40 mm Trial
48590100	Inserter
48590101	Inserter Inner Shaft
48590102	Inserter Inner Shaft Handle
48590000	Container

Appendix 3:

Rigid container steam sterilization instructions

In order to ensure proper sterilization of the Spine division's devices when using the Aesculap SterilContainer (JN series) reusable, rigid sterilization containers, the information below must be followed:

1. Only the following Aesculap reusable rigid container configuration, FDA-cleared, shall be used in a pre-vacuum steam sterilization cycle for use in the USA:

Name	Part Number	Description
Container base	JN442	Full size, 6-inch height, perforated bottom
Lid	JK489	Full size, 2000 lid, aluminum
Filter	US994	7½ inches round, single use

2. Only the following Aesculap reusable rigid container configuration shall be used in a pre-vacuum steam sterilization cycle for use outside the USA:

Name	Part Number	Description
Container base	JN442	Full size, 6-inch height, perforated bottom
Lid	JK489	Full size, 2000 lid, aluminum
Filter	JK095	Round filter paper with process indicator, CE marked

3. Aesculap SterilContainer instructions for use must be followed. If questions arise regarding the use of the Aesculap SterilContainer reusable, rigid sterilization container, Stryker recommends contacting Aesculap directly for guidance.

Appendix 3:

Rigid container steam sterilization instructions

4. Sterilization instructions:

- a. No more than two (2) individual Spine Tray inserts can be placed directly into the Aesculap SterilContainer (JN Series) reusable, rigid sterilization container (perforated bottom).
- b. Stryker's Spinal devices must be placed in their designated locations within the tray inserts.

The Spine division's single devices or modules/caddies/racks may be placed into an Aesculap basket (JC 223R or similar) which can be loaded into the Aesculap SterilContainer reusable, rigid sterilization containers.

Note: Devices must be placed such that individual devices are not stacked and remain in an open position to allow uniform exposure to steam.

- c. Spine Container lids must be removed prior to use with the Aesculap reusable, rigid sterilization container.
- d. Spine devices were validated under the following USA sterilization parameters for a pre-vacuum, three pulse steam cycle:

- **Temperature:** 132°C (270°F)
- **Exposure time:** 4 minutes
- **Cycle dry time:** 30 minutes

- e. Spine devices were validated under the following outside the USA sterilization parameters for pre-vacuum, three pulse steam cycle:

- **Temperature:** 134°C (273°F)
- **Exposure time:** 3 minutes
- **Cycle dry time:** 30 minutes

- f. Reusable rigid sterilization containers must not be stacked within the autoclave as doing so may negatively impact ventilation and sterilization.

Appendix 4:

OUS Parameters for sterilization wrap compatibility for Xia 3 sets

Stryker has conducted validation testing for compatibility of the Xia 3 sets noted below for OUS Parameters (134°C for a minimum 3 minutes).

Below are instructions for Xia 3 sets which contain the French Bender.

Name	Description
Xia 3 Degenerative Instrument Tray	48230012B (Base tray) The French Bender (Part Number 48237010) must be removed from the tray and sterilized separately using a commercially available sterilization wrap.

Name	Description
Xia 3 Rods and Cross Connectors Box	48230006 (Base tray) The French Bender (Part number 48237010) must be removed from the tray and sterilized separately using a commercially available sterilization wrap.

Appendix 5:

Extended dry time table

The following configurations require an extended minimum dry time when double wrapped for steam sterilization only:

Description	Reference	Minimum dry time
Xia Titanium Screw Tray	48040004	60 minutes
Xia Stainless Steel Screw Box	48040001	60 minutes
Xia Titanium Hook Tray	48040006	60 minutes
Xia Stainless Steel Hook Tray	48040007	60 minutes
Xia Common	48040005	105 minutes
MAC Tray	4801-0000	105 minutes
MAC Stainless Steel Tray	48040003	105 minutes
AVS PL PEEK Container:	48350000	105 minutes



Stryker Spine
2 Pearl Court
Allendale, NJ 07401 USA

A surgeon must always rely on his or her own professional clinical judgment when deciding whether to use a particular product when treating a particular patient. Stryker does not dispense medical advice and recommends that surgeons be trained in the use of any particular product before using it in surgery.

The information presented is intended to demonstrate the breadth of Stryker product offerings. A surgeon must always refer to the package insert, product label, and/or instructions for use before using any Stryker product.

The products depicted may be CE marked under the Medical Device Directive 93/42/EEC or European Union Medical Device Regulation. Products may not be available in all markets because product availability is subject to the regulatory and/or medical practices in individual markets. Please contact your Stryker representative if you have questions about the availability of Stryker products in your area.

Stryker Corporation or its divisions or other corporate affiliated entities own, use or have applied for the following trademarks or service marks: Aero, ES2, LITe, Oasys, Stryker, Tritanium, UniVise, Xia. All other trademarks are trademarks of their respective owners or holders.

Aesculap is a registered trademark of Aesculap Ag.

NSRDEV-RG-1_Rev-2

Copyright © 2020 Stryker