

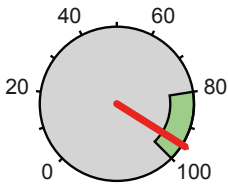
CPR report



Device Type: LIFEPAK® 15 Duration: 00:23:49
 Power On: 1/28/2017 3:19:54 AM Incident ID: 2017012803195400-LP152658
 CPR Annotations Edited: Yes
 Device Configuration: 2LJ55RO40200OR Statistical Parameters: 1000-0300-3000-05

*Times have been adjusted by the system.

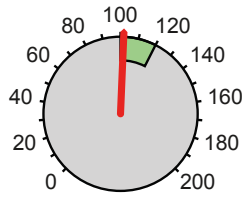
Compression ratio (total time)



20:43 / 21:45 = 95 %

Hands-on time was within predetermined target range of 80-100%

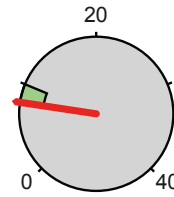
Compression rate



102/minute

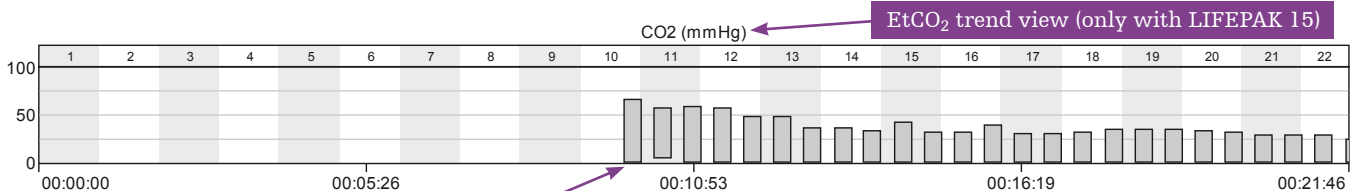
Average compression rate was within target range of 100-120/min

Ventilations/minute



8/minute

Average ventilations delivered per minute



Indicates first captured EtCO₂ value

EtCO₂ trend view (only with LIFEPAK 15)

Summary

Compression count = 2114 Longest compression pause = 0:17
 Pauses over 10 sec = 1 Longest pause time

CPR QUIK-VIEW

Interval Statistics

Time	Compr. ratio, %	Compr. rate	Vent. /min	Comments
0:00	90	116	--	
1:00	72	102	--	LUCAS application completed and mechanical chest compressions initiated
2:00	100	102	--	
3:00	100	102	--	
5:00	100	102	--	
6:00	93	102	--	
7:00	100	102	--	
8:00	100	102	--	
9:00	91	102	--	
10:00	100	102	--	
11:00	91	102	1	First breath capnography

Each red line indicates a chest compression

LUCAS® application

CPR report

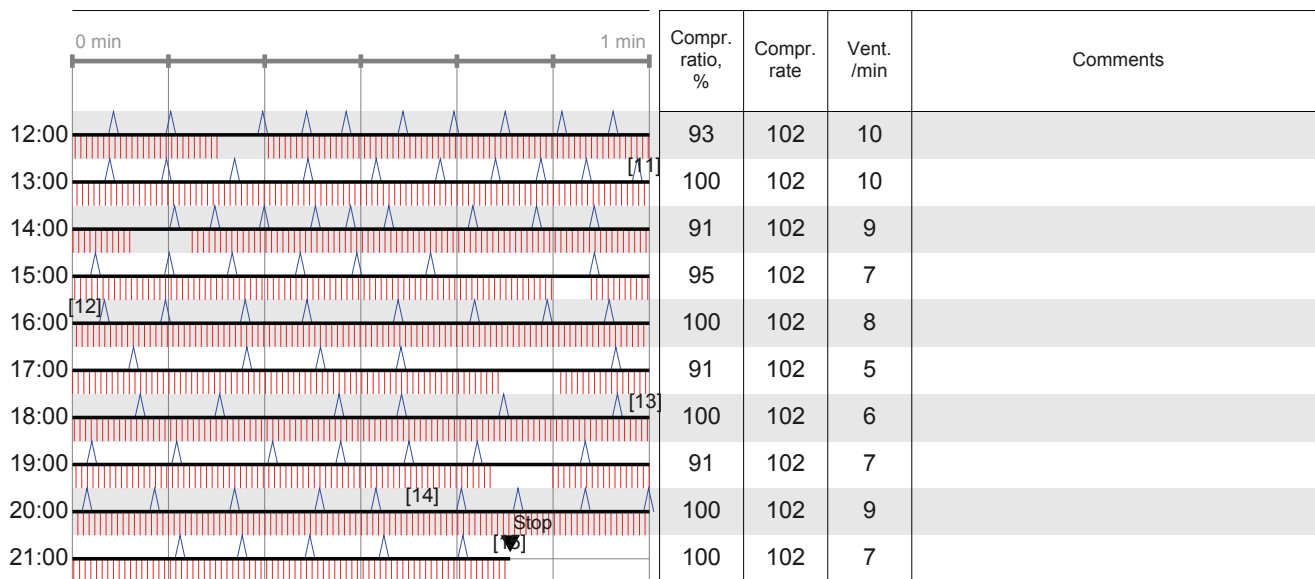


Device Type: LIFEPAK® 15 Duration: 00:23:49
 Power On: 1/28/2017 3:19:54 AM Incident ID: 2017012803195400-LP152658
 CPR Annotations Edited: Yes
 Device Configuration: 2LJ55RO40200OR Statistical Parameters: 1000-0300-3000-05

*Times have been adjusted by the system.

CPR QUIK-VIEW

Interval Statistics



[1] First LUCAS Compression, [2] IV Access, [3] Epinephrine, [4] Vital Signs, [5] Epinephrine, [6] Vital Signs, [7] Intubation, [8] Intubation, [9] Cancel Last, [10] Epinephrine, [11] Vital Signs, [12] Epinephrine, [13] Vital Signs, [14] Epinephrine, [15] Last LUCAS Compression

Note additional interventions and events marked per LIFEPAK are shown in the list of notations.

Physio-Control is now part of Stryker.

For further information, please contact your local Stryker or Physio-Control representative at 800.442.1142 (U.S.), 800.668.8323 (Canada) or visit our website at www.physio-control.com

Physio-Control Headquarters

11811 Willows Road NE
Redmond, WA 98052
www.physio-control.com

Customer Support

P. O. Box 97006
Redmond, WA 98073
Toll free 800 442 1142
Fax 800 426 8049

Physio-Control Canada

Physio-Control Canada Sales, Ltd.
45 Innovation Drive
Hamilton, ON
L9H 7L8
Canada
Toll free 800 668 8323
Fax 877 247 7925