

stryker

Mistral-Air[®]

Forced-air warming system



Equipment

Pre-op/post-operative solutions

Intraoperative solutions

Underbody solutions

Speciality/Pediatric solutions

Accessories

Part numbers

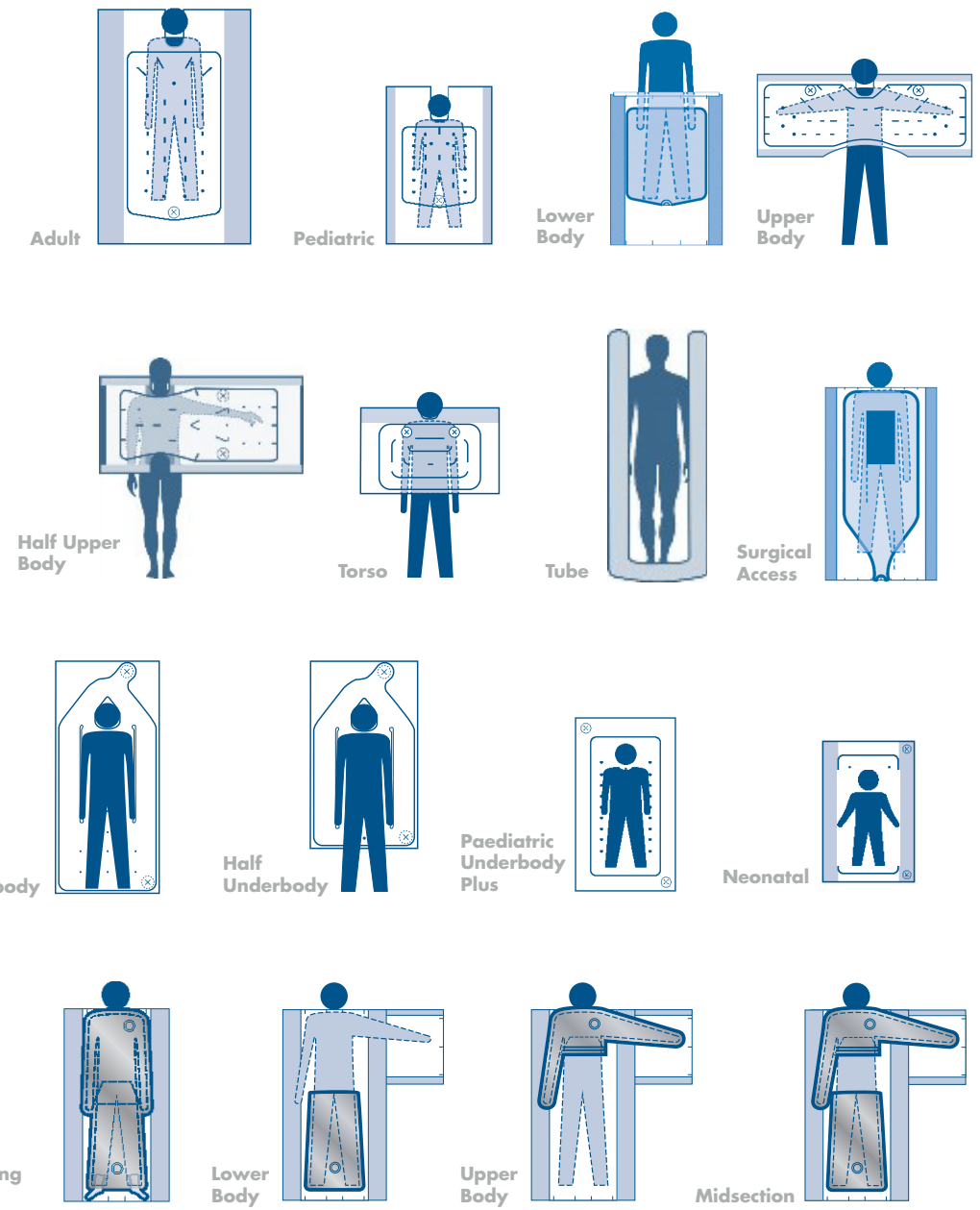
Mistral-Air

Forced-air warming system

Mistral-Air Warming Blankets are available in numerous configurations for patient-and position-specific warming. The blankets are adaptable to most surgical cases, offering a safe, comfortable solution for the patient and a simple, effective tool for caregivers.

Blankets

- Adult
- Pediatric
- Neonatal
- Lower Body
- Upper Body
- Half Upper Body
- Torso
- Tube
- Surgical Access
- Surgical Access (Sterile)
- Lower Surgical Access (Sterile)
- Cardiac Blanket (Sterile)
- Full Underbody
- Half Underbody
- Pediatric Underbody
- Warming Suit



Mistral-Air®

Forced air warming system

Simple. Safe. Efficient.

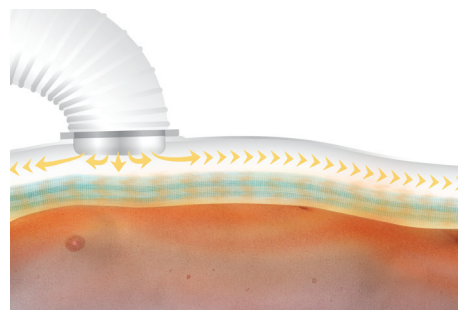
The Mistral-Air Forced Air System enables simple, safe and efficient management of patient temperature. The high volume blower featuring HEPA filtration is designed to work in tandem with low-pressure blankets, evenly distributing diffused warm air over the surface of the patient to help control against the onset of hypothermia.

Mistral-Air Warming System Blankets are available in numerous configurations for patient- and position-specific warming. A broad range of standard and premium reflective warming blankets facilitates use in a wide variety of clinical settings.



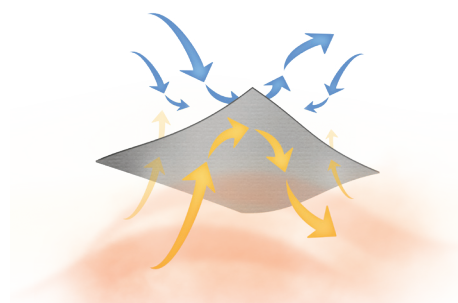
HEPA Filter

Mistral-Air possesses a HEPA filter to ensure effective filtration in protective environments. The Mistral-Air HEPA filter is proven as 99.99% effective in capturing what is considered to be the most difficult particle size to catch, .3 microns. This level of filtration surpasses the level that is required for protective clinical environments such as operating rooms and isolation rooms. An integrated filter maintenance alarm will notify when the filter is in need of replacement.



Diffusion Technology

Diffusion Technology minimizes the disruption of airflow in the surrounding environment. It reduces blanket floating due to the elimination of individual high-pressure jets of air that can cause the blanket to loft. The blanket stays in position, which keeps warm air on the patient and helps to minimize the disruption of air flow in the surrounding environment.



Reflective Technology

Reflective Technology can reduce heat loss by up to 80% in the perioperative environment. It allows for passing warming to optimize the patient warming process during transfer. The ability to both passively and actively warm ensures that patients continue to maintain heat during transfer periods when not connected to a blower unit.



Model No.	MA1100-PM
Length	10.9" (27.6 cm)
Width	15.2" (38.5 cm)
Height	9.4" (23.9 cm)
Settings	Ambient Air; Low 32° C; Medium 38° C; High 43° C
Volts	110-120 V 60 Hz 6 amps
Safety	IEC60601-1, CAN/CSA, C22.2 No 60601-1 ANSI/AAMI ES60601-1 (2005)
EMC	IEC60601-1-2
Warranty	2 years



Model No.	MA1200-PM
Length	6.3" (16 cm)
Width	13.4 (34 cm)
Height	15.7" (40 cm)
Settings	Ambient Air; Low 32° C; Medium 38° C; High 43° C
Volts	100-125 VAC; 50/60 Hz; 6.1 A
Safety	AAMI/ANSI IEC60601-1:2005/(R)2012 + A1:2012 + C1:2009/(r)2012 + A2:2010/(r)2012, IEC 80601-2-35:2016
EMC	IEC 60601-1-2:2014
Warranty	2 years

Additional Features

- Filter maintenance alert after 2,000 hours of use
- Default startup temperature of 38° C
- Over and under temperature alarms
- Quiet, high-volume blower
- Wide range of standard and premium disposables
- Sterile blanket options

Mistral-Air Blankets

Standard

Adult Plus

Part no.
MA2220-PM

Size
89.4" x 52.4" (227.0 cm x 133.0 cm)

Additional info

- Tuck-in flaps
- U-shape neck space
- 1 hose port



The Adult warming blanket is a full body warming blanket

covering the entire patient. It is perfect to use in pre-op, PACU and ICU, and also intra-operatively it can be used for head and neck surgery.

Upper Body Plus

Part no.
MA2260-PM

Size
79.1" x 29.9" (201 cm x 75.9 cm)

Additional info

- U-Shape neck space
- 2 hose ports
- Adhesive tape (1 piece strip)
- Fixed face shield
- 2 x 2 integrated tie strips



The Upper body blanket is covering the patient with one arm out and is perfect for use during procedures at the lower parts of the body.

Pediatric Plus

Part no.
MA2230-PM

Size
65.4" x 52.4" (166.1 cm x 133.0 cm)

Additional info

- Tuck-in flaps
- U-shape neck space
- 1 hose port



The Pediatric warming blanket

is a smaller version of the Adult and covers the entire body of the pediatric for optimum heat transfer. It is perfect to use in pre-op, PACU and ICU, and also intra-operatively it can be used for head and neck surgery.

Half Upper Body Plus

Part no.
MA2265-PM

Size
66.1" x 35.4" (168 cm x 89.9 cm)

Additional info

- U-Shape neck space
- 2 hose ports
- Adhesive tape (1 piece strip)
- Fixed face shield
- 2 x 2 integrated tie strips



The Half Upper Body Blanket is covering the patient with one arm out and is perfect for use during procedures at the lower parts of the body. Designed for abdominal, hip, leg, lithotomy surgeries or half-crucifix surgeries (one arm out). Turn the blanket 90 degrees during the preoperative phase for pre-warming

Neonatal Plus

Part no.
MA2240-PM

Size
45.7" x 52.4 (116.0 cm x 133.0 cm)

Additional info

- 2 hose ports
- multifunctional use; underbody blanket as well as a blanket to cover the neonate
- Removable face shield



The Neonatal Plus warming blanket

can be used as an underbody blanket as well as a blanket covering the neonate. The off center hose port makes it easy to be used for children up to one year in supine, lateral or prone positions. Blue side should be toward the skin of the patient.

Torso Plus

Part no.
MA2270-PM

Size
48.8" x 29.9" (123.9 cm x 75.9 cm)

Additional info

- U-Shape neck space
- 2 hose ports
- 2 adhesive tapes
- Fixed face shield



The torso blanket is designed to warm patients Intra-operatively in cases such as abdominal, hip, leg, lithotomy or non-crucifix (arms beside the body) procedures.

Lower Body Plus

Part no.
MA2250-PM

Size
52.0" x 52.4" (127 cm x 102.1 cm)

Additional info

- Side tuck-in flaps
- 1 hose port



The Lower body blanket can be used for all abdominal and thoracic surgeries as well as neck and arm surgeries. To be used for patients in supine, lateral or prone position.

Mistral-Air Blankets

Standard (continued)

Full Underbody Plus

Part no.

MA2400-PM

Size

86.6" x 35.4" (219.9 cm x 89.9 cm)

Additional info

- 2 hose ports
- Adhesive tape
- Perforated slits to put the arms through
- Avoids heat discomfort for surgical staff



The Full Underbody Plus warming blanket

is perfect to use for abdominal and thoracic surgeries. The blanket provides full body access needed during trauma, open abdominal, cosmetic and multi-site procedures mostly used in supine position. The slits allow flexibility in positioning of the patient. Allowing care givers full unrestricted access to their patients. Blue side should be toward the skin of the patient.

Half Underbody Plus

Part no.

MA2450-PM

Size

66.1" x 35.4" (167.8 cm x 89.9 cm)

Additional Info

- 2 hose ports
- Adhesive tape
- Perforated slits to put the arms through



The Half Underbody Plus warming blanket

is perfect to use for abdominal and thoracic surgeries, when lower extremities are inaccessible like cross-clamp and lithotomy. The blanket provides full body access needed during trauma, open abdominal, cosmetic and multi-site procedures mostly used in supine position. The slits allow flexibility in positioning of the patient.. Blue side should be toward the skin of the patient

Pediatric Underbody Plus

Part no.

MA2475-PM

Size

66.1" x 35.4" (167.8 cm x 89.9 cm)

Additional info

- 2 hose ports
- Tuck-in flaps for optimum fixation of the blanket
- Multifunctional positioning: can be used as underbody blanket as well as a blanket to cover the pediatric
- Removable face shield



The Pediatric Underbody Plus warming blanket

can be used as an underbody blanket as well as a blanket to cover the pediatric. Place the underbody blanket on top of the patient for preoperative use. Designed for pediatrics over one year of age. Blue side should be towards the skin of the patient.

Tube

Part no.

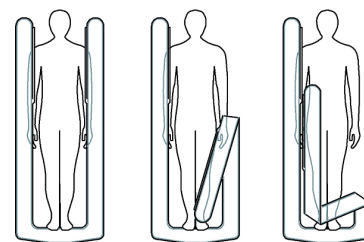
MA0510-PM

Size

68.9" x 15.0"
(175 cm x 38.1 cm)

Additional info

- 1 Hose port can be used in combination with Thermoflect products like a blanket or a (normal) sheet as well



The tube surrounds patients with warmth while allowing clinicians full, unrestricted access. Perfect to use in the catheterization laboratory (cath lab) and during procedures when blanket positioning is difficult.

Surgical Access

Part no.

MA2290-PM Non Sterile

MA2280-PM Sterile Version

Size

86.6" x 52.4" (219.9 cm x 133 cm)

Additional info

- 2 hose ports
- Integrated tuck in flaps for optimum fixation of the blanket
- Adhesive tape secures the surgical access window to the patient
- Surgical access window
- Fixed face shield
- To enlarge the surgical field use the perforated strips



The surgical access blanket is perfect to use in thoracic, spinal and abdominal procedures. A sterile version is available (article number MA2280) and positions easily in the sterile field. Surgeons can easily enlarge the surgical field. The Lower Surgical Access sterile Blanket is perfect to use in thoracic procedures. The clear groin/femoral access window allows for easy access to the femoral artery

Lower Surgical Access (Sterile)

Part no.

MA2285-PM

Size

72.0" x 52.4" (182.8 cm x 133 cm)

Additional info

- 1 hose port
- Adhesive tape secures the surgical access window to the patient (remove tape from the skin carefully in a movement parallel to the skin (angle of 180 degrees)
- Integrated tuck in flaps for optimum fixation of the blanket
- Surgical access window
- Positions easily in the sterile field



Cardiac Blanket (Sterile)

Part no.

MA2286-PM

Size

66.9" x 52.4" (141.7 cm x 127 cm)

Additional info

- Adhesive tape on tuck-in flaps for optimum fixation of the blanket
- Adhesive tape secures the surgical access window to the patient. Removing the tape requires careful care. Remove tape from the skin carefully in a movement parallel to the skin (angle of 180 degrees)
- Surgical access window
- Use with face shield (MA02010-PM)



The cardiac blanket sterile is conceived to be used in cardiothoracic and vascular procedures. The pre-attached 3 foot hose allows for placement of the warming unit outside the sterile field.

Mistral-Air Blankets Reflective

The unique insulating top layer of Premium Blankets The unique insulating top layer of the Reflective Premium Blankets reflects the patient's radiant body heat preserving the body temperature. Thermal insulation, like that created with Mistral-Air reflective options, helps reduce heat loss from skin to the environment. The Premium Blanket portfolio can be used both actively by being plugged into the warming unit and passively without being plugged into the warming unit. Even without a warming unit connected to the blanket, the reflective layer will reflect the patient's radiant body heat preserving the body temperature. Reflective technology can reduce heat loss by up to 80% in the perioperative environment. The radiolucent materials will not interfere with imaging requirements. Blue side of blanket always faces toward patient skin. Premium Blankets are X-Ray translucent, but not for use in MRI.

Premium Adult Reflective

Part no.

MA3320-PM

Size

89.4" x 52.4" (227 cm x 133 cm)

Additional info

- 2 hose ports
- Integrated tuck in flaps for optimum fixation of the blanket.
- U-Shape neck space for optimum patient comfort.
- All-in-One application, Prewarming, Intraoperatively, PACU and ICU.



Premium Pediatric Reflective

Part no.

MA3330-PM

Size

65.4" x 52.4" (116.1 cm x 102.1 cm)

Additional info

- 1 hose port
- Integrated tuck in flaps for optimum fixation of the blanket
- U-Shape neck space for optimum patient comfort
- All-in-One application, Prewarming, Intraoperatively, PACU and ICU



Premium Neonatal Reflective

Part no.

MA3340-PM

Size

45.7" x 52.4" (116 cm x 133 cm)

Additional info

- 2 hose port
- Removable face shield
- Multifunctional positioning: can be used as underbody blanket as well as a blanket to cover the pediatric
- All-in-One application, Prewarming, Intraoperatively, PACU and ICU



Premium Lower Body Reflective

Part no.

MA3350-PM

Size

52.0" x 52.4" (132.1 cm x 133 cm)

Additional info

- Side tuck-in flaps
- Adhesive tape
- 1 hose port



Premium Upper Body Reflective

Part no.

MA3360-PM

Size

79.1" x 29.9" (200.9 cm x 75.9 cm)

Additional info

- 2 hose ports
- Adhesive tape
- Fixed face shield
- 2 tie strips that tie from the outside in



Premium Full Underbody Reflective

Part no.

MA3400-PM

Size

86.6" x 35.4" (219.9 cm x 89.9 cm)

Additional info

- 2 hose ports
- Adhesive tape (1 piece strip each side)
- Removable face shield
- Easy use with gloves
- Perforated slits to put the arms through



Premium Half Underbody Reflective

Part no.

MA3450-PM

Size

66.1" x 35.4" (167.8 cm x 89.9 cm)

Additional info

- 2 hose ports
- Adhesive tape (1 piece strip each side)
- Removable face shield
- Easy use with gloves
- Perforated slits to put the arms through



Premium Pediatric Underbody Reflective

Part no.

MA3475-PM

Size

66.1" x 35.4" (167.8 cm x 89.9 cm)

Additional info

- 2 hose ports
- Removable face shield
- Tuck-in flaps for optimum fixation of the blanket
- Multifunctional positioning: can be used as underbody blanket as well as a blanket to cover the pediatric



Mistral-Air Blankets

Warming Suits

The **Mistral-Air Warming Suits** are designed for versatility and adaptability for each phase of the perioperative pathway. The Mistral-Air Warming Suit is ideal for pre-warming. It combines the functionality of a hospital gown with the benefits of a warming suit / blanket.

Additional info

- Adjustable Velcro neckline
- Full back access arm is half sleeve for easier access to IV and arm
- Soft non-woven material
- Velcro fasteners at arm sleeves



Warming Suit - Small

Part no.
MA1710-PM
Size
Less than 65"

Warming Suit - Medium

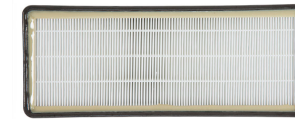
Part no.
MA1720-PM
Size
65" - 70.9"

Warming Suit - XL

Part no.
MA1740-PM
Size
Greater than 76.8"

Mistral-Air

Accessories



MA1200-PM Filter
Part number: MA1200-1001-PM



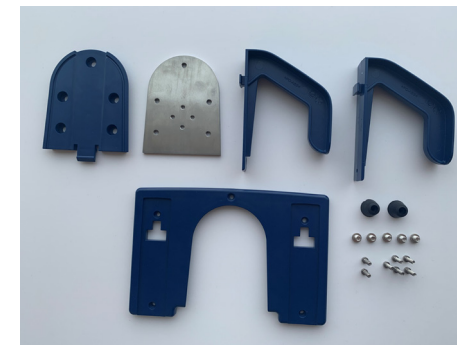
MA1100-PM Filter
Part Number: MA1100-1001-PM



MA5200-PM Height adjustable stand shown with MA5122-PM basket



THC5 Stand (white)



MA5002-PM Mounting kit



Standard Mounting

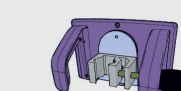
Universal mounting options



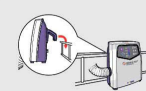
Trolley or IV Pole ISO bed rail

Mounting Extension Kit:

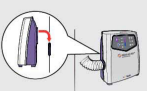
Extend the number of options



Extension Kit



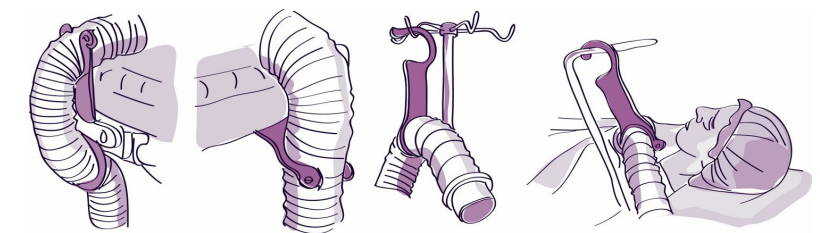
Bed Brackets



Wall Mount Option



Hose clamp MA5001



Hose position options for Mistral-Air blower (both models)

Customer Support Services

Technical Support

Our Technical Support comprises a team of professionals available to help with your needs. Contact via phone at 1 800 STRYKER or email at medicaltechnicalsupport@stryker.com.

Clinical Services

Stryker's clinicians can customize tools and resources to assist your facility in achieving your prevention goals. We focus on sustaining results and developing a plan for an ongoing clinical partnership. Our comprehensive programs include assessing current practices, identifying opportunities for improvement and assisting in action plan development.

Stryker's ProCare Services

Every day, you count on your medical equipment to perform at its best. With ProCare Services, our people help to ensure your equipment is ready to perform when it's needed and make it easier to get the most from your investment. When an issue arises, we promise that we'll solve it — performing repairs quickly and correctly.

ProCare isn't just a service program. It's a partnership you can count on to give you one less thing to worry about, and one more reason to feel confident you're doing all you can for your clinicians, staff and patients.

All ProCare agreements provide:

- Stryker-authorized service representative
- Stryker-direct factory parts
- Two-hour callback response time
- Fixed service costs up front
- Increased uptime
- 24-72 hour equipment turnaround time*

*Based on the provisions of the Service Agreement and the location of the product.

Flex Financial Program

Our financial programs provide a range of smart alternatives designed to fit your organization's needs. We offer flexibility beyond a cash purchase with payment structures that can be customized to meet budgetary needs and help to build long-term financial stability. Contact your account manager for more information.

Stryker Corporation or its divisions or other corporate affiliated entities own, use or have applied for the following trademarks or service marks: Flex Financial, ProCare, Stryker. All other trademarks are trademarks of their respective owners or holders.

Mistral-Air® is a registered trademark product of The Surgical Company International.

Mkt Lit-1885 16 DEC 2019 REV A
Copyright © 2019 Stryker

3800 E. Centre Avenue
Portage, MI 49002 USA
t: 269 329 2100
toll free: 800 327 0770

stryker.com