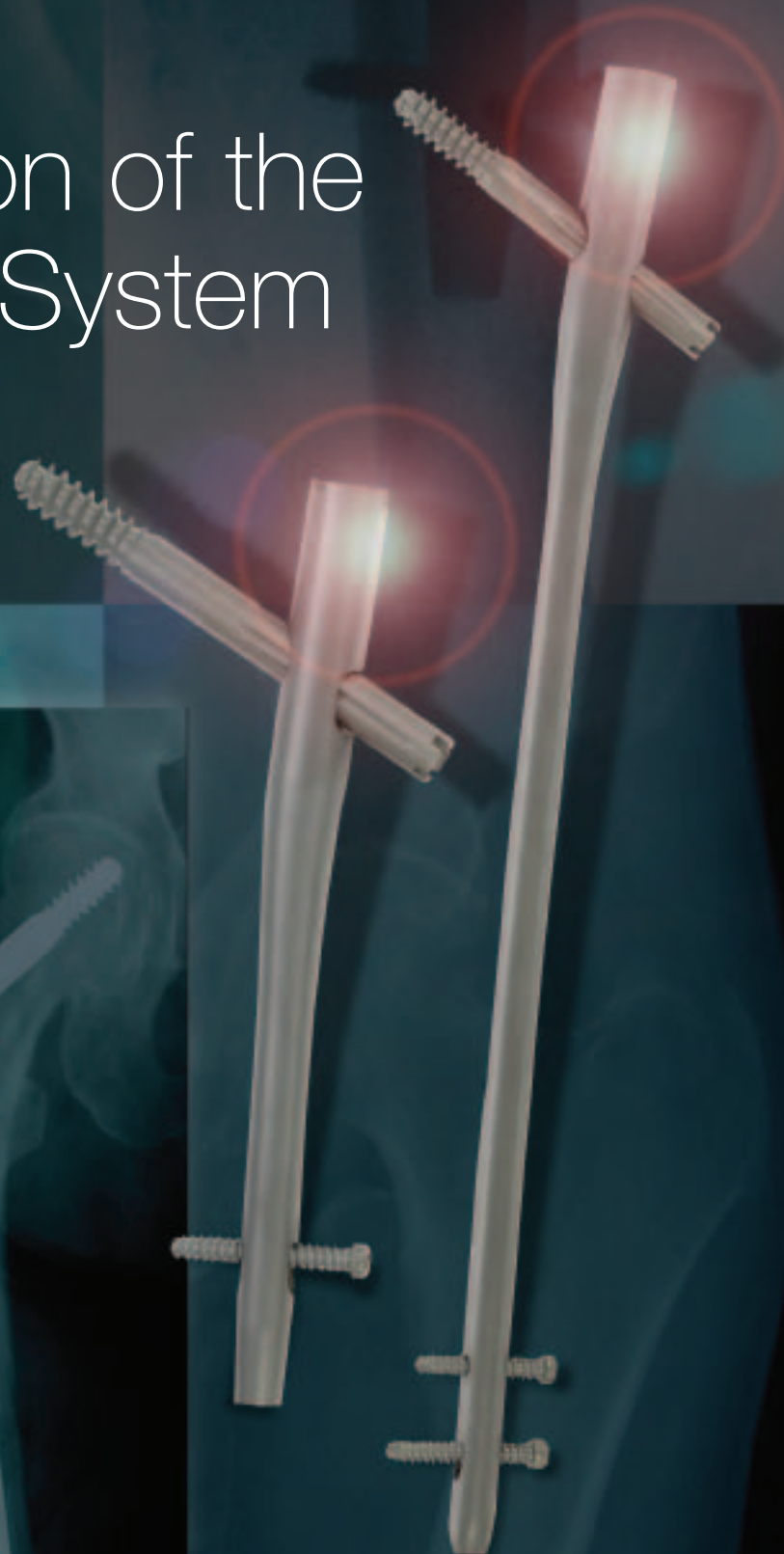


# Gamma3™

The Compact  
Titanium Version of the  
Gamma™ Nail System



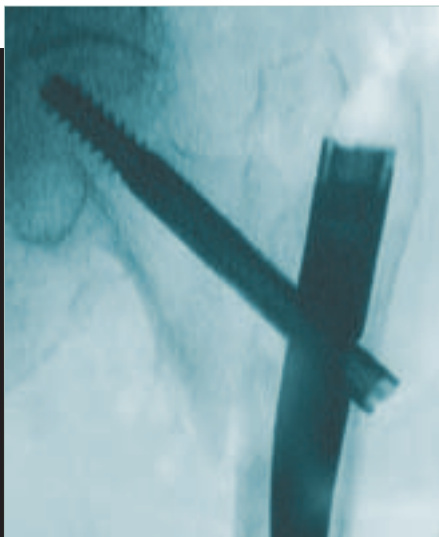
# Trochanteric Gamma3™ Locking Nail



- Titanium Alloy with Type II Anodization (Ti-6Al-4V)
- Designed to Address Stable and Non-Stable Intertrochanteric Fractures
- Option for the Younger or Smaller Patient where Bone Removal is a Concern
- The Alternative to Compression Hip Screws
- May Reduce Trauma to the Patient Through Closed Operating Technique<sup>3,4</sup>
- Limited Incision at the Tip of the Greater Trochanter May Result in Minimal Blood Loss and Potentially Less Operative Time<sup>3,4,5,6</sup>
- Early Weight Bearing may be Typically Allowed as a Result of Biomechanically Stable Construct<sup>1,2,3,4,5,6,7</sup>



**Pre-Op**



**Post-Op**



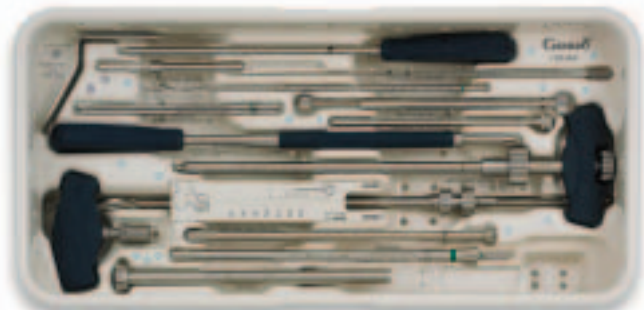
**Post-Op**

# Gamma3™ Instrument Trays

The Gamma3™ instrument set design is based on the T2™/S2™ IM Nail instrument platform.

## Gamma3™ Basic Instrument Tray

Catalog #	Item Description
702628	T-Handle, Quicklock
1210-6450S	K-Wire, Ø3.2 x 450mm, Sterile
1320-0065	Screwdriver 8mm, Ball-Tip, T-Handle
1320-0090	Nail Holding Bolt
1320-0100	Gamma3™ Targeting Arm
1320-0105	Knob for Targeting Sleeve
1320-0110	Clip for K-Wire
1320-0118	Targeting Sleeve
1320-0130	Lag Screw Guide Sleeve
1320-0140	Drill Guide Sleeve (Ø4.2mm for Drill Cat. No. 1320-3042S)
1320-0150	K-Wire Sleeve
1320-0180	Lag Screw Ruler
1320-0190	Lag Screw Step Drill
1320-0200	Lag Screwdriver
1320-0230	Set Screwdriver 4mm, Flexible Shaft
1320-3042S	Drill, Ø4.2 x 300mm, AO Small, Sterile
1806-0041	Awl, Curved, Cannulated
1806-0095	Guide Wire Handle
1806-0096	Guide Wire Handle Chuck
1806-0185	Tissue Protection Sleeve, Long (Distal)
1806-0215	Drill Sleeve, Long (Distal)
1806-0232	Screwdriver, Long
1806-0315	Trocar, Long (Distal)
1806-0325	Screw Gauge, Long
1806-0365	Screw Scale, Long (for Long Nail)
1806-0480	Screw Gauge (for Long Nail)
1806-4270S	Drill, Ø4.2x180mm, AO Small, Sterile (for Long Nail)
1320-6000	Instrument Set, Basic, Complete with Instruments
1320-9000	Instrument Tray, Basic, Empty
1320-0002	X-Ray Template Trochanteric Gamma3™
1320-0005	X-Ray Template Long Gamma3™, R 2.0
1320-0112	U-Wire (for Clip for K-Wire)



## Gamma3™ Optional Instrument Tray

Catalog #	Item Description
0152-0218	K-Wire 1.8x310mm for Condyle Screws
1213-9091S	Guide Pin for Cannulated Cutter, Ø4.2x400mm, Sterile
1320-0011	One Step Conical Reamer
1320-0021	Conical Reamer, Trocar, Short
1320-0022	Conical Reamer, Trocar, Long
1320-0026	Multihole Trocar, Short
1320-0027	Multihole Trocar, Long
1320-0031	Conical Reamer Sleeve, Short
1320-0032	Conical Reamer Sleeve, Long
1320-0041	Cannulated Cutter
1320-0042	Sleeve for Cannulated Cutter
1320-0070	Screwdriver Strike Plate
1320-0080	Universal Socket Wrench (Not in tray)
1320-0131	Lag Screw Guide Sleeve, Navigated (Not in tray)
1320-0135	Adaptor for One Shot Device, Gamma™ (Not available at this time)
1320-0160	Fragment Control Clip (Not available at this time)
1320-0170	Fragment Control Sleeve (Not available at this time)
1320-3010	One Shot Device, Gamma3™
1320-3030S	Drill, Ø3.0 x 300mm, AO Small, Sterile (Not available at this time)
1407-4006	Nail Extraction Adpater
1806-0020	Guide Wire Ruler (for Long Nail)
1806-0110	Universal Rod
1806-0125	Reduction Spoon
1806-0130	Wrench 8mm/10mm
1806-0170	Slotted Hammer
1806-0255	Condyle Screwdrivers
1806-0450	Tissue Protection Sleeve
1806-0460	Drill Sleeve Ø4.2mm
1806-4290S	Drill, Ø4.2x230mm, AO Small, Sterile (for Long Nail)
1806-5020S	Drill, Ø5.0x340mm, AO Small, Sterile for Condyle or Shaft Screws
702634	Large A/O Hall Adaptor (Not in tray)
1320-9005	Optional Instrument Tray, Empty



# Long Gamma3™ Locking Nail



- Titanium Alloy with Type II Anodization (Ti-6Al-4V)
- Designed to Address Combination Intertrochanteric/Sub-Trochanteric Fractures; Pathological and Impending Pathological Fractures
- Easy Entry Through a Small Incision at the Tip of the Greater Trochanter<sup>3,4</sup>
- Early Weight Bearing may be Typically Allowed as a Result of Biomechanically Stable Construct<sup>1,2,3,4,5,6,7</sup>
- Closed IM Nailing Technique Reduces Soft Tissue Exposure<sup>3,4</sup>
- Distal Diameters 11mm, 13mm and 15mm Available



**Post-Op**



**Pre-Op**



**Post-Op**

# Trochanteric Gamma3™ Locking Nail



## Key Statistics

Indications:	Stable and Non-Stable Intertrochanteric Fractures
Target Angles:	120°, 125°, 130°
Anteversion:	0°
Proximal Diameter:	15.5mm
Distal Diameter:	11mm
Length:	180mm
Lag Screws:	Self-Tapping Thread Diameter: 10.5mm Core Diameter: 6.7mm Lengths: 75-120mm
Distal Screw:	Fully Threaded (or Partially Threaded) Self-Tapping Cortical Screws Diameter: 5mm Lengths: 25-120mm
Set Screw:	8mm x 17.5mm
Material:	Titanium Alloy with Type II Anodization (Ti-6Al-4V)

# Long Gamma3™ Locking Nail



## Key Statistics

Indications:	Sub-Trochanteric Fractures, Non-Stable Intertrochanteric Fractures, Combination Intertrochanteric/Sub-Trochanteric Fractures, Pathological/Impending Pathological Fractures
Target Angles:	120°, 125°, 130°
Anteversion:	10°
Proximal Diameter:	15.5mm
Distal Diameter:	11, 13, 15mm
Lengths:	280-480mm, left and right
Lag Screws:	Self-Tapping Thread Diameter: 10.5mm Core Diameter: 6.7mm Lengths: 75-120mm
Distal Screw:	Fully Threaded (or Partially Threaded) Self-Tapping Cortical Screws Diameter: 5mm Lengths: 25-120mm
Set Screw:	8mm x 17.5mm
Material:	Titanium Alloy with Type II Anodization (Ti-6Al-4V)

## REFERENCES:

1. Grosse A., Favreul E., Tagland G., "The Gamma™ Nail; The results at the CTO Strasbourg" Paper presented at the International Symposium "Recent Advances in Locking Nails", Hong Kong, 1992
2. Taglang G. Favreul E., "Results from the Centre de Traumatologie et d'Orthopedie, Strasbourg": Paper presented at the Advanced Course in Intramedullary Locking Nailing, Courchevel, France, February 1991.
3. Leung K.S. et al., (Prince of Wales Hospital, Hong Kong), J. Bone Joint Surg [Br] 1992; 74B, 3:345-51
4. Boriani S. et al, results of Multicentric Italian Experience on the Gamma™ Nail. A report on 648 cases, Orthopedics 1991; 14, 12: 1307-1314.
5. Radford, P.J., (University Hospital Queen's Medical Centre, Nottingham, England)": Comparison of results of the Gamma™ Nail and Dynamic Hip Screw in Extracapsular fractures of the Proximal Femur.": Paper presented at Advanced Course in Intramedullary Locking Nailing, Courchevel, France, February 1991.
6. Williams, J.J. Cohen, P.Z. Pittsburgh Orthopaedic Journals, 1990, Volume 1, pages 20-23.
7. DeGroote, W., Van Hoye M. et al, (St. Jan General Hospital, Brugge/Middelheim General Hospital, Antwerp, Belgium): "The Gamma™ Locking Nail in the treatment of trochanteric fractures" Article in press.

---

**Joint Replacements**

---

**Trauma, Extremities & Deformities**

---

**Craniomaxillofacial**

---

**Spine**

---

**Biologics**

---

**Surgical Products**

---

**Neuro & ENT**

---

**Interventional Pain**

---

**Navigation**

---

**Endoscopy**

---

**Communications**

---

**Imaging**

---

**Patient Handling Equipment**

---

**EMS Equipment**

325 Corporate Drive  
Mahwah NJ 07430  
t: 201-831-5000 t: 800-447-7836

[www.stryker.com](http://www.stryker.com)

The information presented in this brochure is intended to demonstrate the breadth of Stryker product offerings. Always refer to the package insert, product label and/or user instructions before using any Stryker product. Surgeons must always rely on their own clinical judgment when deciding which treatments and procedures to use with patients. Products may not be available in all markets. Product availability is subject to the regulatory or medical practices that govern individual markets. Please contact your Stryker representative if you have questions about the availability of Stryker products in your area.

The marks bearing the symbol ™ are trademarks of Stryker.  
The marks bearing the symbol ® are registered trademarks of Stryker.

Literature Number: **LG3B Rev.1**  
GC/GS 5m 04/05

Copyright © 2005 Stryker  
Printed in USA