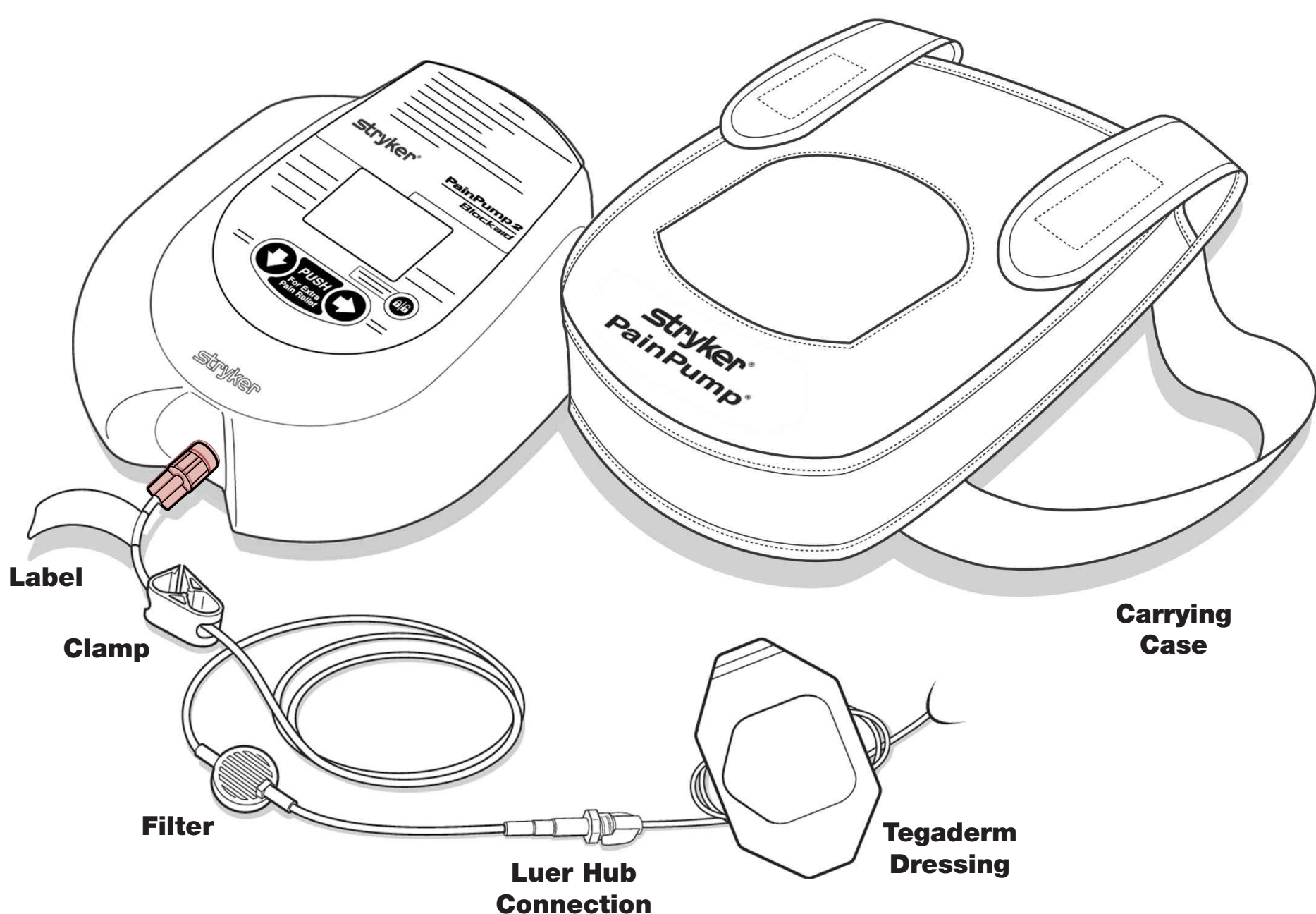


PainPump[®] 2 BlockAid

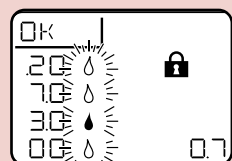
stryker[®]

Instruments

Nurse Information Guide



Information Screen Display Screen



Mode	Explanation
OK	The unit is administering medication.
EDIT	Settings and values are in edit mode.
DOSE	A bolus amount has been activated.
CODE	The unit is requesting the security code. Enter the security code to unlock the settings or press the Lock button to return to the normal run screen.
OFF	The unit is deactivated and not administering medication.
FILL	The unit has delivered all the medication and may be refilled.
DONE	The unit has delivered its limit of medication or completed its life-span. Discard unit.
NO	Incorrect security code entered.
WAIT	Waiting period imposed due to security code being repeatedly entered incorrectly.
HOLD	The unit is preparing to deactivate while the Lock button is pressed.

Symbol	Definition
	System malfunction
	BLOCKAGE Catheter or Tubing is kinked or blocked.
	PRESS Signals physician to press the Lock button.
	EMPTY The medication reservoir is empty.
	Settings are locked.
	Settings are unlocked and may be edited.
	The unit is dispensing medication at a steady flow rate when the droplets appear sequentially.
	Simultaneous droplets indicate that the unit has begun dispensing a bolus dose of medication.

Indications for Use

The Stryker PainPump[®] 2 delivers controlled amounts of medication and narcotics directly to the intraoperative site for pain management. The pump infuses the medication at an hourly flow rate and provides the option for patient controlled bolus doses. Medications and narcotics are infused through intramuscular, subcutaneous, and epidural routes.

The Stryker PainPump[®] 2 delivers controlled amounts of medication directly to the intraoperative site for pain management and/or antibiotic administration. The pump infuses the medication at an hourly flow rate and provides the option for patient controlled bolus doses. Medications are infused through intramuscular and subcutaneous routes.

The Stryker PainPump[®] 2 is intended for controlled delivery of local anesthetics and narcotics in close proximity to nerves for postoperative regional anesthesia and pain management. Routes of administration may be intraoperative, perineural, or percutaneous.

The Stryker PainPump[®] 2 is also intended to significantly decrease narcotic use and pain when used to deliver local anesthetics to surgical wound sites or close proximity to nerves when compared with narcotic only pain management.

Key Points for Nurses

Be prepared to answer patient questions about the PainPump[®] 2 BlockAid.

- Press and hold the Pump On/Off button for 5 seconds to turn pump on or off.
- Explain the white clamp on the tubing set. It must be open for the pump to flow. Close the clamp to stop flow.
- Explain the bolus button: By pushing the blue button that says "For extra pain relief PUSH," the patient will get additional medication delivered to help reduce pain when the lockout time is at 0 minutes.
- Monitor bottom right of digital display to check amount delivered.
- If necessary, consult physician for reprogramming.
- Do not submerge in water.
- Ensure patient is discharged with Instructions for Use.

Important Information

Caution: Federal law (USA) restricts this device to sale by, or on the order of, a physician.

Sterile only if package is unopened and undamaged. Single patient use only. Do not resterilize or reuse.

Sterile and nonpyrogenic

Contains no latex

To avoid ischemic injury or necrosis, limit the amount of epinephrine used in the anesthetic solution infused by the unit

Contraindications

The PainPump[®]2 BlockAid infusion pump unit is contraindicated for the following:

- Infusion of blood and blood products
- Infusion of insulin
- Infusion of critical or life-supporting medication whose stoppage, interruption, overdelivery, or underdelivery would likely cause serious injury or death
- Infusion of any solution that is incompatible with the materials of the PainPump[®]2 system. Consult the pharmaceutical manufacturer's precautions and guidelines and refer to the Technical Specifications in the the Instructions For Use to ensure the medications to be used will not interact with the materials of the PainPump[®]2 and Infusions Set and possibly cause damage or leakage
- Use in infusion regimens by patients who do not possess the mental, physical, or emotional capability to self-administer their therapy, or who are not under the care of a responsible adult

24 Hour Information Hotline
877-848-5756

For more information, contact your local Stryker sales representative.
www.painpump.com

The information presented in this brochure is intended to demonstrate the breadth of Stryker product offerings. Always refer to the package insert, product label and/or user instructions before using any Stryker product. Products may not be available in all markets. Product availability is subject to the regulatory or medical practices that govern individual markets. Please contact your Stryker representative if you have questions about the availability of Stryker products in your area.

Products referenced with [™] designation are trademarks of Stryker. Products referenced with [®] designation are registered trademarks of Stryker.

Literature Number: 9100-001-012 Rev. None
UnDe/NAC

Copyright © 2005 Stryker
Printed in USA

4100 East Milham Avenue
Kalamazoo, MI 49001 USA
t: 269 323 7700 f: 800 999 3811
toll free: 800 253 3210

www.stryker.com