

System 6 Heavy Duty Blades



The Performance
You Expect

Blade Mount

Only Stryker blades have the patented Stryker blade mount. Use of non Stryker Cutting accessories may damage your powertools and void your warranty.



Beveled Edge

- Soft Tissue Sparing – Ideal for MIS and smaller incisions
- Lower friction with cutting block reduces bur formation and galling



No Offset

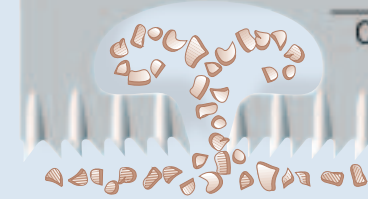
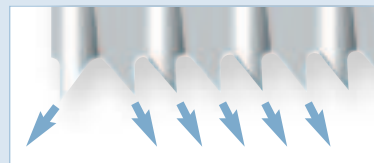
- Constant blade thickness over entire length
- Better fit in cutting jig for more accurate cuts
- Reduced Skive

30% Stiffer Blade

- Less flex
- Reduced Skive

Patent Pending Tooth Design

- Unique center gap for bone chip clearance
- Teeth are oriented for optimal bone removal. Outer teeth clear bone chips away from cut area. Inner teeth are oriented towards the center and feed chips into center gap and the chip clearance area



System 6 Heavy Duty Blades

Recommended HD Blades for popular knee systems

Knee Prosthesis			Optimal	Alternative
BIOMET	TKR	AGC MAXIM ASCENT VANGUARD FINN	6125-137-90 6118-137-90	6113-137-90
	UNI	REPICCI VANGUARD PERFORMANCE	6113-137-90 6113-107-90	
DEPUY		LCS Knee	6125-147-90 6118-147-90	
		PFC Sigma Preservation Uni- compartmental Knee AMK S-Rom	6125-119-90 6113-127-90 6125-97-90	6118-119-90 6118-97-90
ENCORE	TKR	FOUNDATION 3D KNEE	6125-97-90	6118-97-90
	UNI	EPIK	6118-97-90	
EXACTECH	TKR	OPTETRAK	6125-127-90	6118-127-90
SMITH & NEPHEW	TKR	PROFIX GENESIS	6125-137-90 6125-127-90	6118-137-90 6118-127-90
	UNI	ACCURIS	6113-137-90	6118-137-90
STRYKER	TKR	DURACON KINEMAX SCORPIO TRIATHLON	6125-127-90 6125-127-100	6118-127-90
	UNI	EIUS	6113-127-90	6118-127-90
SULZER (INTERMEDICS)	TKR	NATURAL KNEE APOLLO	6125-147-90 6125-147-90	
WRIGHT MEDICAL	TKR	ADVANCE ADVANTIM	6125-127-90	6118-127-90
	UNI	ADVANCE AXIOM	6113-127-90 6113-89-90	6118-127-90 6118-89-90
ZIMMER	TKR	NEXGEN NATURAL LEGACY	6125-127-90 6125-127-100	6118-127-90
	UNI	NEXGEN NATURAL	6113-127-90	6118-127-90

*alternative blades are necessary due to different tolerances and age of knee system as well as individual surgeon preference.



stryker®

stryker®

Surgical

Joint Replacements

Trauma, Extremities, Deformities

Craniomaxillofacial

Spine

Orthobiologics

Instruments

Interventional Pain

Navigation

Endoscopy

Communications

Imaging

Patient Handling Equipment

EMS Equipment

The information presented in this brochure is intended to demonstrate the breadth of Stryker product offerings. Always refer to the package insert, product label and/or user instructions before using any Stryker product. Products may not be available in all markets. Product availability is subject to the regulatory or medical practices that govern individual markets. Please contact your Stryker representative if you have questions about the availability of Stryker products in your area.

Products referenced with TM designation are trademarks of Stryker.
Products referenced with [®] designation are registered trademarks of Stryker.

Literature Number: 9100-103-000 Rev. None
UnDe/RS.

Copyright © 2006 Stryker
Printed in USA

Stryker Instruments
4100 East Milham Avenue
Kalamazoo, MI 49001 USA
t: 269 323 7700 f: 269 353 3026
toll free: 800 253 3210

www.stryker.com

System 6 Blades

Engineered for High Performance

- Faster
- Smoother
- Precise, Accurate Cuts

HIGH PERFORMANCE BLADES

System 6 Heavy Duty Blades

Conversion Chart (inches / mm)

.025 in / .64 mm	.050 in / 1.27 mm
.035 in / .89 mm	.054 in / 1.37 mm
.038 in / .97 mm	.058 in / 1.47 mm
.042 in / 1.07 mm	

Engineered for High Performance

Specifications
(Blades shown at actual size)



0.025IN. / 0.64mm

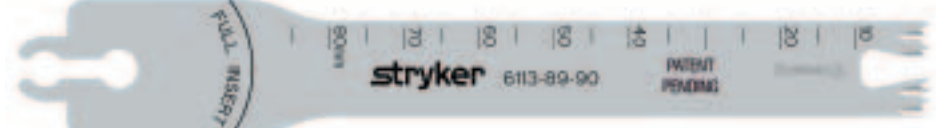
6125-064-075	inches	mm
Thickness:	0.025	0.64
Width:	0.984	25
Length:	2.953	75



6118-089-075	inches	mm
Thickness:	0.035	0.89
Width:	0.709	18
Length:	2.953	75



6125-089-075	inches	mm
Thickness:	0.035	0.89
Width:	0.984	25
Length:	2.953	75



6113-089-090	inches	mm
Thickness:	0.035	0.89
Width:	0.511	13
Length:	3.543	90



6118-089-090	inches	mm
Thickness:	0.035	0.89
Width:	0.709	18
Length:	3.543	90

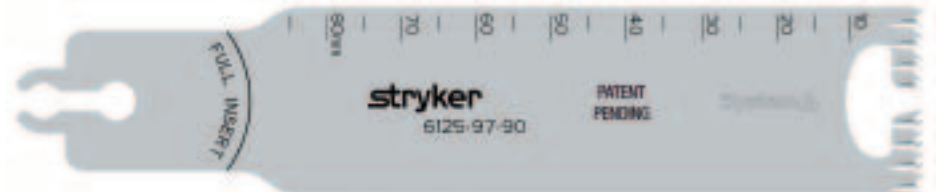


6125-089-090	inches	mm
Thickness:	0.035	0.89
Width:	0.984	25
Length:	3.543	90



0.038IN. / 0.97mm

6118-097-090	inches	mm
Thickness:	0.038	0.97
Width:	0.709	18
Length:	3.543	90



6125-097-090	inches	mm
Thickness:	0.038	0.97
Width:	0.984	25
Length:	3.543	90



0.042IN. / 1.07mm

6113-107-90	inches	mm
Thickness:	0.042	1.07
Width:	0.511	13
Length:	3.543	90

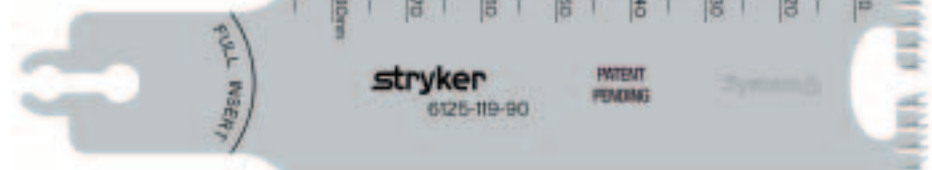


6125-107-90	inches	mm
Thickness:	0.042	1.07
Width:	0.984	25
Length:	3.543	90



0.047IN. / 1.19mm

6118-119-90	inches	mm
Thickness:	0.047	1.19
Width:	0.709	18
Length:	3.543	90



6125-119-90	inches	mm
Thickness:	0.047	1.19
Width:	0.984	25
Length:	3.543	90



0.050IN. / 1.27mm

6113-127-90	inches	mm
Thickness:	0.050	1.27
Width:	0.511	13
Length:	3.543	90



6118-127-100	inches	mm
Thickness:	0.050	1.27
Width:	0.709	18
Length:	3.543	90



6118-127-100	inches	mm
Thickness:	0.050	1.27
Width:	0.709	18
Length:	3.937	100



0.050IN. / 1.27mm

6125-127-90	inches	mm
Thickness:	0.050	1.27
Width:	0.984	25
Length:	3.543	90



6125-127-100	inches	mm
Thickness:	0.050	1.27
Width:	0.984	25
Length:	3.937	100



0.054IN. / 1.37mm

6113-137-90	inches	mm
Thickness:	0.054	1.37
Width:	0.511	13
Length:	3.543	90



6118-137-090	inches	mm
Thickness:	0.054	1.37
Width:	0.709	18
Length:	3.543	90



6125-137-090	inches	mm
Thickness:	0.054	1.37
Width:	0.984	25
Length:	3.543	90



0.058IN. / 1.47mm

6125-147-060	inches	mm
Thickness:	0.058	1.47
Width:	0.709	18
Length:	2.362	60



6125-147-090	inches	mm
Thickness:	0.058	1.47
Width:	0.984	25
Length:	3.543	90