

# Revolution

## Cement Mixing & Delivery

### Step 1



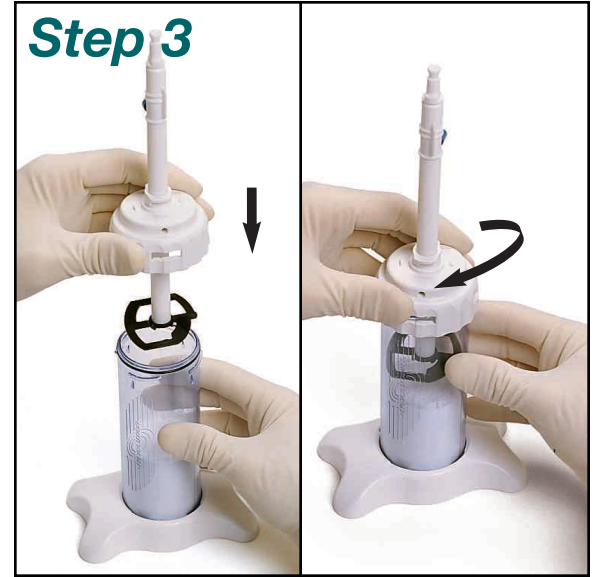
Connect nitrogen source to vacuum pump. Set nitrogen pressure to 70-100 psi. **WARNING: Do not operate pump outside the recommended pressure range.**

### Step 2



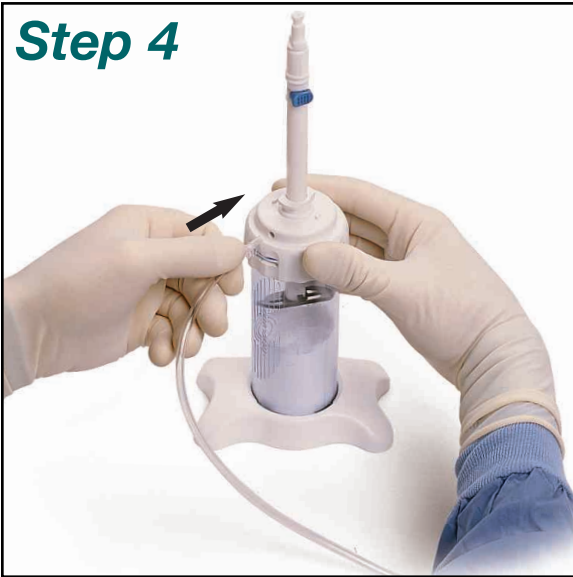
Pour bone cement powder and liquid monomer into the cartridge following the bone cement manufacturer's protocol. **NOTE: If three batches of Simplex® P Cement are to be used, the order of loading must alternate between powder and liquid for each batch.**

### Step 3



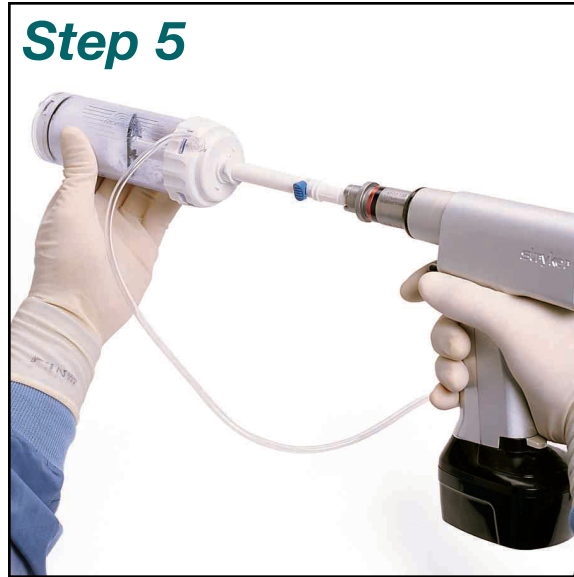
Remove loading funnel and secure the lid assembly onto the cartridge by pushing it down and simultaneously turning it clockwise, ensuring the lid locks into position.

### Step 4



Attach the vacuum tube to the lid assembly on the cartridge, and then attach the vacuum tube to the vacuum pump. Apply vacuum pressure until the gauge reads 20-22 in Hg.

### Step 5



Attach a rotary power tool to the mixing shaft. Mix for 30 seconds moving the mixing shaft to the FULL UP and FULL DOWN positions. Remove the rotary power tool from the mixing shaft. If not using a rotary power tool, snap mixing handle onto mixing shaft. Mix for 30 seconds moving the mixing shaft to the full up and full down positions while rotating shaft 180 degrees per stroke.

### Step 6



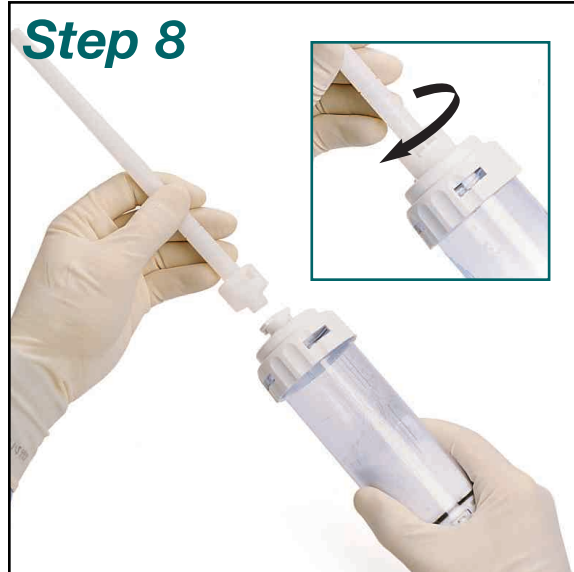
Remove the vacuum tubing from the lid assembly on the cartridge.

### Step 7



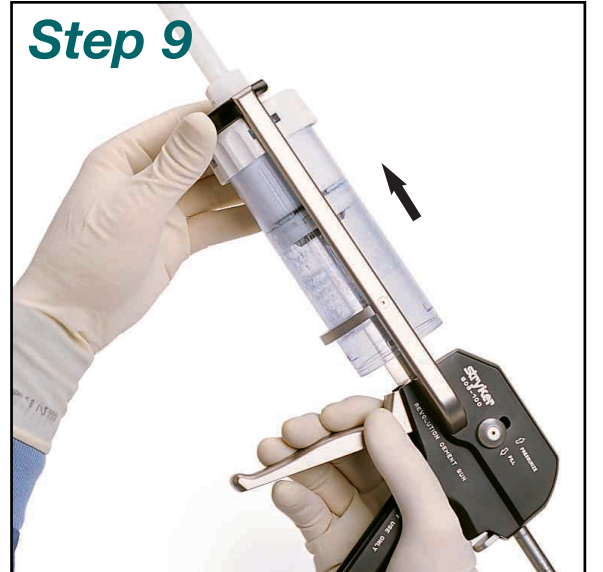
Press and rotate the blade release button. Slowly withdraw the mixing shaft while rotating to remove the mixing shaft from the cartridge. **NOTE: The mixing blade will remain in the cartridge.**

### Step 8



Attach desired application nozzle to the cartridge lid by pushing it down and simultaneously turning it clockwise, ensuring the nozzle locks into position.

### Step 9



If not already removed, remove the base from the cartridge and place the filled cartridge into the cradle of the cement injection gun, making sure that the rod on the gun is pulled back fully. **Note: Hold the injection gun and cartridge in the vertical position until the nozzle is filled.**

#### NOTE:

Mixing times are approximate and may vary with user technique and/or room temperature.

Before use in the clinical environment, practice using the system with acrylic bone cement. Mixing time and proper application can be technique dependent.

#### CAUTION:

**Mix enough cement to allow for losses in the application tip and cement penetration, especially in total hip procedures.**



4100 East Milham Avenue  
Kalamazoo, MI 49001 USA  
t: 269 323 7700 f: 800 999 3811  
toll free: 800 253 3210

www.stryker.com

For more information about Revolution or other Cement Mixing and Delivery Systems, contact your local Stryker Sales Representative.