

Marketing/Promotional Materials Approval Form



PART NUMBER: 9100-008-019 CURRENT REVISION: A

PART NAME: The Mill Brochure NEW REVISION: B

Doc Control Use only:
 ECR #: 132640
 DATE RELEASED: 4/12/11

REASON FOR CHANGE:
Logo

EFFECTIVITY: On Release After Date: 4/8/11
 DEVIATION: No Yes
 OBSOLETE: No Yes, If yes, identify part(s) _____

DESCRIPTION OF CHANGE:
 See mark-up of revisions attached
 Copy of old and new revisions attached
 Written description of change

• Medical Design Excellence logo
 - added to front
 • Applied Access to better outcomes
 logo to front.

<p>1. If new product document or form of media with new product claims or content changes to existing materials, the signatures of the following individuals are required:</p> <p>a. Originator b. Product Manager c. Marketing Communications (Shared Services) d. Regulatory Affairs e. Research and Development f. Legal (if product is subject of litigation or regulatory referral to legal for approval.)</p>	<p>2. If new product document or form of media but content has been lifted from approved existing materials without changes, the signatures of the following individuals are required:</p> <p>a. Originator b. Product Manager c. Marketing Communications (Shared Services) d. Regulatory</p>	<p>3. If typographical or layout change to existing materials, the signatures of the following individuals are required:</p> <p>a. Originator b. Product Manager c. Marketing Communications (Shared Services) d. Regulatory</p>
---	--	--

APPROVALS		
Print Name	Sign Name	Date
■ Originator: <u>Aaren Morrow</u>		<u>4/6/11</u>
■ Product Manager: <u>Aaren Morrow</u>		<u>4/6/11</u>
■ Market Comm: <u>Melanie Sullivan</u>		<u>4/4/11</u>
■ R.A.: <u>Jessica Rockafellow</u>		<u>4/7/11</u>
<input type="checkbox"/> R&D:		
<input type="checkbox"/> Legal:		
■ Doc Control: <u>Alicia Roy</u>		<u>4/12/11</u>
Distribute to: <input type="checkbox"/>	<input type="checkbox"/>	

The Mill

stryker®

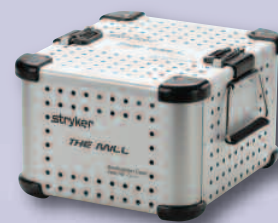
Neuro Spine ENT



Ordering Information and Product Numbers

- 5400-700-000 The Mill
- 5400-704-000 The Mill Cable
- 5400-702-000 Fine Blade, 3.2mm (5/pkg)
- 5400-701-000 Medium Blade, 5.0mm (5/pkg)
- 5400-703-000 Coarse Blade, 8.0mm (5/pkg)

5400-705-000
Sterilization Container



5400-750-000
Mill Instrument Driver



access
to better Outcomes

Products referenced with TM designation are trademarks of Stryker. Products referenced with [®] designation are registered trademarks of Stryker.

The information presented in this brochure is intended to demonstrate the breadth of Stryker product offerings. Always refer to the package insert, product label and/or user instructions before using any Stryker product. Products may not be available in all markets. Product availability is subject to the regulatory or medical practices that govern individual markets. Please contact your Stryker representative if you have questions about the availability of Stryker products in your area.

Literature Number: 9100-008-019 Rev. B
UnDe/P.S.

Copyright © 2011 Stryker
Printed in USA

Stryker® Neuro Spine ENT
4100 East Milham Avenue
Kalamazoo, MI 49001 USA
t: 269 323 7700 f: 269 353 3026
toll free: 800 253 3210

www.stryker.com

stryker®

Neuro Spine ENT

The Mill

access
to better Outcomes



Advancing meaningful innovation is one of the ways we make a difference at Stryker. The Mill is an innovative electronic bone mill designed to enable uniform and consistent bone yield.



The Mill

access
to better Outcomes

- Blades are designed for a milled bone yield for better consistency and uniformity
- Multiple blade sizes allow for customized bone granulation for a wider range of procedures
- Preassembled blades allow for maximum efficiency during set-up and operation

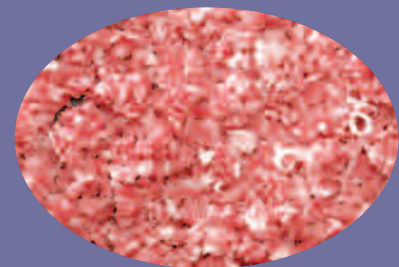


Mill Instrument Driver
Independent console for use with pneumatic system

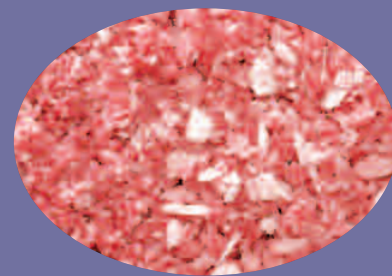


CORE Console
Powers multiple instruments simultaneously including The Mill

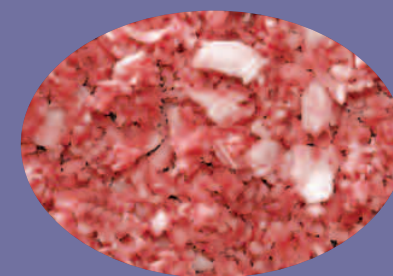
- Single pass cutting action enables uniform particulate size with low temperature bone exposure
- Collection tray minimizes bone loss through mill cycle
- The CORE console enables simultaneous use of The Mill, Stryker High Speed Drills, Saws and other micro powered instrumentation with precise compatibility



Fine Blade
5400-702-000
Bone particulate up to 3.2mm



Medium Blade
5400-701-000
Bone particulate up to 5.0mm



Coarse Blade
5400-703-000
Bone particulate up to 8.0mm