

## Cordless Driver 2

### Stryker, the leader in cordless power

Cordless Driver 2 extends the time-honored tradition of power and versatility in the Sports Medicine arena. With the improved Cordless Driver 2, Stryker continues to offer state-of-the-art battery powered equipment that you have come to expect from Stryker Instruments.

Increased speed and torque are combined with proven cordless reliability to provide unsurpassed power and versatility.

#### • Powerful

Capable of tunneling, drilling and reaming.



#### • Versatile

Useful for most orthopaedic procedures. Eliminates the need for multiple handpieces.



#### • Cordless

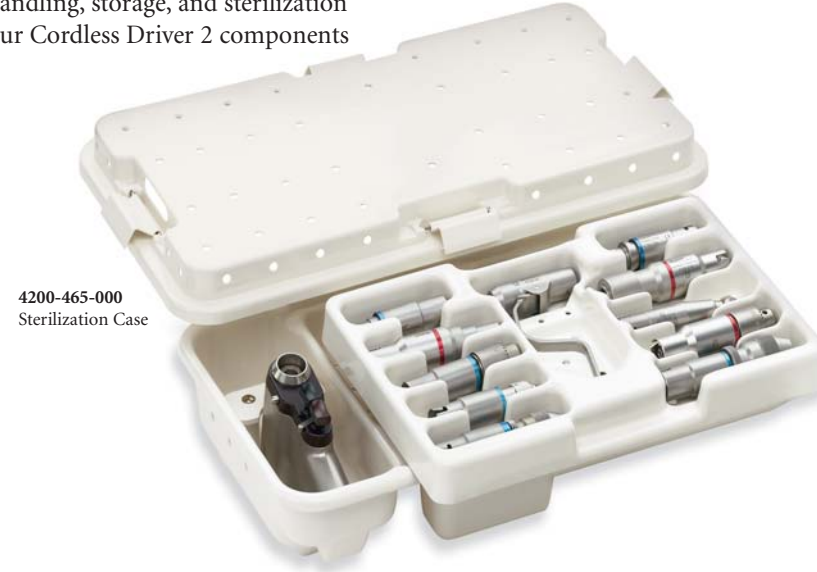
Exceptional maneuverability.



## Cordless Driver 2 Accessories

### Sterilization case

- Modular sterilization containers assist in the handling, storage, and sterilization of your Cordless Driver 2 components



4200-465-000  
Sterilization Case

### Ordering Information

#### Cordless Driver 2 Handpiece

4200-000-000 Cordless Driver 2 handpiece (includes the wire collet 4100-062)

#### Drilling Attachments

4100-062-000 Wire Collet (.028" - .071" diameter)  
4100-110-000 AO Small Drill  
4100-125-000 Pin Collet (.078" - .125" diameter)  
4100-126-000 Adjustable Pin Collet  
4100-131-000 1/4" Keyed Drill Chuck  
4100-132-000 5/32" Keyed Drill Chuck  
4100-133-000 1/4" Keyless Drill Chuck  
4100-134-000 1/8" Keyless Drill Chuck  
4100-135-000 Hudson®/Modified Trinkle Drill  
4100-160-000 Trinkle Drill  
4100-225-000 Pin Collet (.126" - .157" diameter)  
4100-600-000 1:1 Bur Attachment  
4100-700-000 High Speed Bur Attachment

#### Reaming Attachments

4100-210-000 AO Large Reamer  
4100-231-000 1/4" Keyed Reamer Chuck  
4100-235-000 Hudson®/Modified Trinkle Reamer  
4100-260-000 Trinkle Reamer  
4100-260-000s4 DHS/DCS quick lock

#### Other Attachments

4100-120-000 T-Latch Attachment  
4100-400-000 Sagittal Saw Attachment  
4100-310-000 Right Angle Drive - AO Large Reamer  
4100-335-000 Right Angle Drive, Modified Trinkle Adapter  
4100-355-000 Radiolucent Right Angle Drive  
4100-410-000 Radiolucent Adapter



#### Accessories

4110-120-000 Battery Charger, 120 VOLT  
4110-112-000 Battery Adapter for use with 4112 Batteries and System 2000 Charger  
4100-420-000 Charger Software Upgrade Kit (Includes chip and installation tool)  
4100-131-132 Universal Drill Chuck Key  
4110-412-000 Charger Module for 4112 Battery  
4110-422-000 Charger Module for 4212 & 4215 Battery  
4112-000-000 Battery Pack  
4212-000-000 Small Smart Battery  
4215-000-000 Large Smart Battery  
4110-426-000 Charger Module for 4126-110, & 4222-110  
4222-000-000 Small Aseptic Battery Kit for Cordless Driver 2 (inc. non-sterile battery, transfer shield, battery housing)  
4226-000-000 Large Aseptic Battery Kit for Cordless Driver 2 (inc. non-sterile battery, transfer shield, battery housing)  
4126-110-000 System 5/Cordless Driver 2 Non-sterile Battery/ Large Cordless Driver 2 Non-sterile Battery/ Small  
4222-110-000 Cordless Driver 2 Non-sterile Battery/ Small  
4222-450-000 Aseptic Sterilization Case (for 4222 battery)  
4226-450-000 Aseptic Sterilization Case (for 4226 battery)  
4100-451-000 Sterilization Case and Tray  
4200-465-000 Plastic Sterilization Case

stryker®

#### Joint Replacements

#### Trauma, Extremities & Deformities

#### Craniomaxillofacial

#### Spine

#### Biologics

#### Surgical Products

#### Neuro & ENT

#### Interventional Spine

#### Navigation

#### Endoscopy

#### Communications

#### Imaging

#### Patient Care & Handling Equipment

#### EMS Equipment

The information presented in this brochure is intended to demonstrate the breadth of Stryker product offerings. Always refer to the package insert, product label and/or user instructions before using any Stryker product. Products may not be available in all markets. Product availability is subject to the regulatory or medical practices that govern individual markets. Please contact your Stryker representative if you have questions about the availability of Stryker products in your area.

Products referenced with ™ designation are trademarks of Stryker. Products referenced with ® designation are registered trademarks of Stryker.

Literature Number: 1000-621-000 Rev. B UnDe/P.S.

Copyright © 2009 Stryker  
Printed in USA

Stryker Instruments  
4100 East Milham Avenue  
Kalamazoo, MI 49001 USA  
t: 269 323 7700 f: 800 999 3811  
toll free: 800 253 3210

www.stryker.com

stryker®

Surgical

# Cordless Driver 2

More Speed  
More Torque



Expanding your  
Cordless Capabilities.

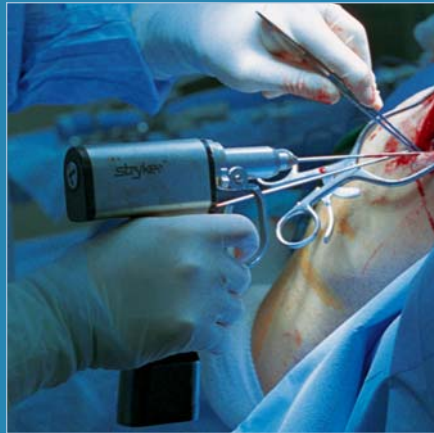


# Cordless Driver 2

**50% More Speed...**  
**20% More Torque...**

Proven power and reliability for applications such as:

- Sports Medicine
- Trauma
- Total Joint



**4200-000-000** Cordless Driver 2  
Includes **4100-062-000**  
Wire Collet, 0.028"-0.071"  
(0.7mm-1.8mm)

Modes of Operation:  
Safe  
Reverse Lockout  
Forward, Reverse & Oscillate

DO NOT IMMERSE

# Battery Charging System

## Battery Charger

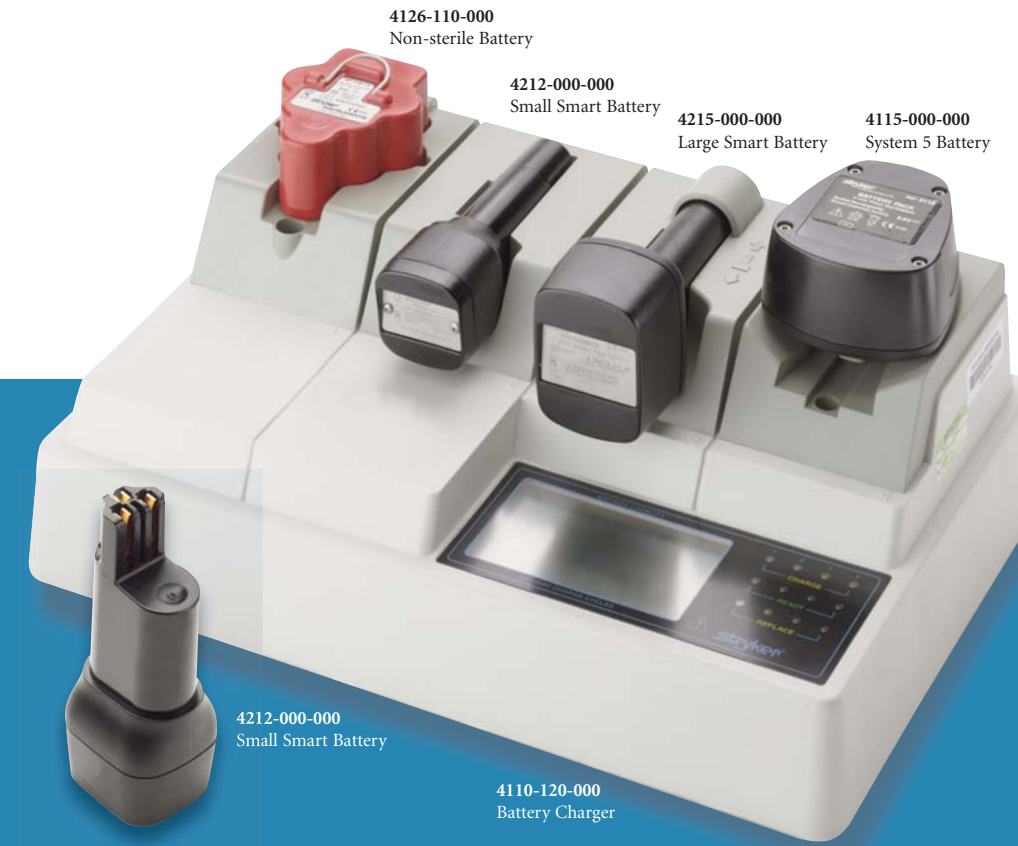
- Quickly charges System 5/4, System 2000 and Cordless Driver and non-sterile batteries.

- Modular design allows for 4 different batteries to charge simultaneously.

- Odometer screen diagnoses battery levels and usage.

- Indicator lights provide battery status feedback.

- Conditioning cycle for discharging non-sterile batteries.



**4126-110-000**  
Non-sterile Battery

**4212-000-000**  
Small Smart Battery

**4215-000-000**  
Large Smart Battery

**4115-000-000**  
System 5 Battery

**4212-000-000**  
Small Smart Battery

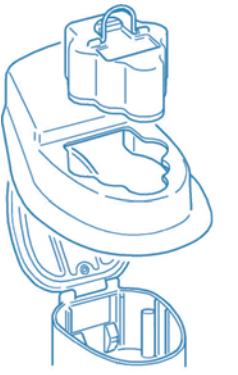
**4110-120-000**  
Battery Charger

# Battery Options

## Aseptic Battery Kit

(includes battery pack, housing, & shield)

- Non-sterile battery ensures longer life of battery.
- Safe, simple assembly for operating room staff.



**4126-110-000**  
Non-sterile Battery, Lg.  
**4222-110-000**  
Non-sterile Battery, Sm.

**4126-120-000**  
Battery Housing, Lg.  
**4222-120-000**  
Battery Housing, Sm.

**4126-130-000**  
Transfer Shield, Lg.  
**4222-130-000**  
Transfer Shield, Sm.

## Drilling Attachments



**4100-133-000** 1/4" Keyless Drill Chuck



**4100-135-000** Hudson Mod. Trinkle Drill



**4100-134-000** 1/8" Keyless Drill Chuck



**4100-160-000** Trinkle Drill



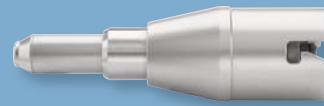
**4100-131-000** 1/4" Keyed Drill Chuck



**4100-110-000** AO Small Drill



**4100-132-000** 5/32" Keyed Drill Chuck



**4100-600-000** 1:1 Bur Attachment



**4100-700-000** High Speed Bur Attachment



**4100-120-000** T-Latch Attachment



**4100-125-000**  
Pin Collet (shown)  
0.078"-0.125"  
(2.0mm-3.2mm)

**4100-126-000**  
Adjustable Pin Collet

**4100-225-000**  
Pin Collet  
0.126"-0.157"  
(3.2mm-4.0mm)

## Reaming Attachments



**4100-235-000** Hudson Mod. Trinkle Reamer



**4100-260-000** Trinkle Reamer



**4100-231-000** 1/4" Keyed Reamer Chuck



**4100-210-000** AO Large Reamer



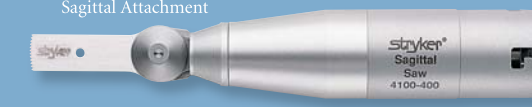
**4100-335-000** Right Angle Drive Modified Trinkle Reamer



**4100-310-000** Right Angle Drive AO Large Reamer

## Sagittal Saw Attachment

**4100-400-000**  
Sagittal Attachment



- Variable speed for precision cutting
- Unique tool-free blade mount reduces blade whip & flex.

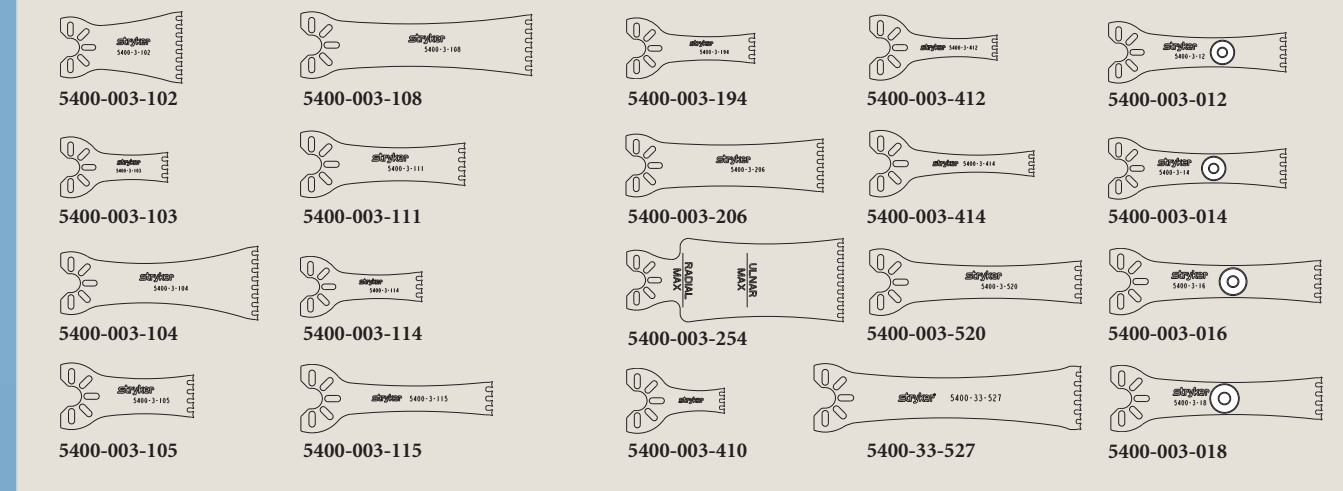
## Micro Dual-Cut Sagittal Blades

**21% More Efficient Cut\***

- Patented Dual-Cut blade design provides greater cutting efficiency, resulting in quicker cuts, longer blade life and improved handpiece reliability.

**35% Reduction of heat\***

- Reduced friction with improved blade efficiency results in less heat generated at the point of blade contact.



See bur & blade guides for a complete list of available cutting accessories.  
\*Compared to similar 2296-Series blades.