

STRYKER SPINE Spinal Fixation Systems XIA®3

NON STERILE PRODUCT

The STRYKER Spine Spinal Fixation Systems are made of devices for fixation of the non-cervical spine. They include smooth rods, screws, hooks, closure screws, connectors, and staples. The components are manufactured from either titanium material (Titanium alloy and CP Titanium), Stainless Steel or Cobalt-Chromium-Molybdenum Alloy.

MATERIALS

XIA®3 Spinal System

Titanium Alloy: Ti6Al4V according to ISO 5832-3 and ASTM F-136: Screws, hooks, closure screws, connectors and rods.

Pure Titanium: CP Ti grade 4 according to ISO 5832-2 and ASTM F-67: Rods

Cobalt-Chromium-Molybdenum Alloy #1 according to ISO 5832-12 and ASTM F-1537: Rods.

Titanium and Stainless steel implants should not be mixed in a patient; otherwise corrosion may occur resulting in decreased mechanical resistance.

Cobalt-Chromium-Molybdenum Alloy and Stainless steel implants should not be mixed in a patient; otherwise corrosion may occur resulting in decreased mechanical resistance.

MATERIALS IDENTIFICATION

Titanium: symbol **T**

Stainless Steel: symbol **S**

Cobalt-Chromium-Molybdenum: symbol **C**

INDICATIONS

XIA®3 Spinal System

The XIA®3 Spinal System is intended for use in the non-cervical spine. When used as an anterior/anterolateral and posterior, non-cervical pedicle and non-pedicle fixation system, the XIA®3 Spinal System is intended to provide additional support during fusion using autograft or allograft in skeletally mature patients in the treatment of the following acute and chronic instabilities or deformities: degenerative disc disease (DDD) (defined as back pain of discogenic origin with degeneration of the disc confirmed by history and radiographic studies); spondylolisthesis; trauma (i.e., fracture or dislocation); spinal stenosis; curvatures (i.e., scoliosis, kyphosis, and/or lordosis); tumor; pseudoarthrosis and failed previous fusion.

The Ø5.5mm rods from the STRYKER Spine Radius™ Spinal System and Ø6.0 mm Vitallium rods from XIA® Spinal System are intended to be used with the other components of XIA®3 Spinal System.

CONTRAINDICATIONS

Contraindications may be relative or absolute. The choice of a particular device must be carefully weighed against the patient's overall evaluation. Circumstances listed below may reduce the chances of a successful outcome:

- Any abnormality present which affects the normal process of bone remodeling including, but not limited to, severe osteoporosis involving the spine, bone absorption, osteopenia, primary or metastatic tumors involving the spine, active infection at the site or certain metabolic disorders affecting osteogenesis.
- Insufficient quality or quantity of bone which would inhibit rigid device fixation.
- Previous history of infection.
- Excessive local inflammation.

- Open wounds.
- Any neuromuscular deficit which places an unsafe load level on the device during the healing period.
- Obesity. An overweight or obese patient can produce loads on the spinal system which can lead to failure of the fixation of the device or to failure of the device itself. Obesity is defined according to the W.H.O. standards.
- Patients having inadequate tissue coverage of the operative site.
- Pregnancy.
- A condition of senility, mental illness, or substance abuse. These conditions, among others, may cause the patient to ignore certain necessary limitations and precautions in the use of the implant, leading to failure or other complications.
- Foreign body sensitivity. Where material sensitivity is suspected, appropriate tests should be made prior to material selection or implantation.
- Other medical or surgical condition which would preclude the potential benefit of spinal implant surgery, such as the presence of tumors, congenital abnormalities, elevation of sedimentation rate unexplained by other diseases, elevation of white blood cell count (WBC), or marked left shift in the WBC differential count.

These contraindications can be relative or absolute and must be taken into account by the physician when making his decision. The above list is not exhaustive.

GENERAL CONDITIONS OF USE

The implantation of pedicle screw spinal systems must be performed only by experienced spinal surgeons having undergone the necessary specific training in the use of such systems because this is a technically demanding procedure presenting a risk of serious injury to the patient.

The information contained in the Package Insert is necessary but not sufficient for the use of this device. This information is in no sense intended as a substitute for the professional judgment, skill and experience of the surgeon in careful patient selection, preoperative planning and device selection, knowledge of the anatomy and biomechanics of the spine, understanding of the materials and the mechanical characteristics of the implants used, training and skill in spinal surgery and the use of associated instruments for implantation, securing the patient's cooperation in following an appropriately defined post-operative management program and conducting scheduled post-operative follow-up examinations.

INFORMATION FOR PATIENTS

The surgeon must discuss all physical and psychological limitations inherent to the use of the device with the patient. This includes the rehabilitation regimen, physical therapy, and wearing an appropriate orthosis as prescribed by the physician. Particular discussion should be directed to the issues of premature weight bearing, activity levels, and the necessity for periodic medical follow-up. The surgeon must warn the patient of the surgical risks and make aware of possible adverse effects. The surgeon must warn the patient that the devices cannot and do not replicate the flexibility, strength, reliability or durability of normal healthy bone, that the implants can break or become damaged as a result of strenuous activity or trauma, and that the devices may need to be replaced in the future. If the patient is involved in an occupation or activity which applies inordinate stress upon the implant (e.g., substantial walking, running, lifting, or muscle strain) the surgeon must advise the patient that resultant forces can cause failure of the devices. Patients who smoke have been shown to have an increased incidence of non-unions. Surgeons must advise patients of this fact and warn of the potential consequences. For diseased patients with degenerative disease, the progression of degenerative disease may be so advanced at the time of implantation that it may substantially decrease the expected useful life of the appliance. In such cases, orthopaedic devices may be considered only as a delaying technique or to provide temporary relief.

INFECTION

Transient bacteremia can occur in daily life. Dental manipulation, endoscopic examination and other minor surgical procedures have been associated with transient bacteremia. To help prevent infection at the implant site, it is advisable to use antibiotic prophylaxis before and after such procedures.

INSTRUMENTS

Instruments are provided by STRYKER Spine and must be used to assure accurate implantation of the devices. While rare, intraoperative fracture or breakage of instruments can occur. Instruments which have experienced extensive use or extensive force are more susceptible to fracture depending on the operative precaution, number of procedures, disposal attention. Instruments must be examined for wear or damage prior to surgery. Surgeons must verify that the instruments are in good condition and operating order prior to each use during surgery.

REUSE

An implant should never be reused. While it may appear undamaged, a used implant may have acquired blemishes or latent compromise of its integrity which would reduce its service life. Surgeons must verify that the instruments are in good condition and operating order prior to use during surgery.

HANDLING

Correct handling of the implant is extremely important. The operating surgeon should avoid notching or scratching the device.

ALLERGY AND HYPERSENSITIVITY TO FOREIGN BODIES

When hypersensitivity is suspected or proven, it is recommended that the tolerance of the skin to the materials that make up the implants be checked before they are implanted.

IMPLANT SELECTION AND USE

The choice of proper shape, size and design of the implant for each patient is crucial to the success of the surgery. The surgeon is responsible for this choice which depends on each patient.

Patients who are overweight may be responsible for additional stresses and strains on the device which can speed up metal fatigue and/or lead to deformation or failure of the implants.

The size and shape of the bone structures determine the size, shape and type of the implants. Once implanted, the implants are subjected to stresses and strains. These repeated stresses on the implants should be taken into consideration by the surgeon at the time of the choice of the implant, during implantation as well as in the post-operative follow-up period. Indeed, the stresses and strains on the implants may cause metal fatigue or fracture or deformation of the implants, before the bone graft has become completely consolidated. This may result in further side effects or necessitate the early removal of the osteosynthesis device.

Improper selection, placement, positioning and fixation of these devices may result in unusual stress conditions reducing the service life of the implant. Contouring or bending of rods or plates is recommended only if necessary according to the surgical technique of each system. Rods or plates should only be contoured with the proper contouring instruments. Incorrectly contoured rods/plates, or rods/plates which have been repeatedly or excessively contoured must not be implanted. The surgeon is to be thoroughly familiar with the surgical procedure, instruments and implant characteristics prior to performing surgery. Refer to the STRYKER Spine surgical protocols for additional procedural information. Periodic follow-up is recommended to monitor the position and state of the implants, as well as the condition of the adjoining bone.

METAL COMPONENTS

Some of the alloys utilized to produce orthopaedic implants contain metallic elements that may be carcinogenic in tissue cultures or intact organisms under unique circumstances. Questions have been raised in the scientific literature as to whether or not these alloys themselves may be carcinogenic in implant recipients. Studies conducted to evaluate this issue have not identified conclusive evidence of such phenomena.

SYSTEM COMPATIBILITY

While some degree of corrosion occurs on all implanted metal and alloys, contact of dissimilar metals may accelerate this corrosion process. The presence of corrosion may accelerate fatigue fracture of implants, and the amount of metal compounds released into the body system may also increase. Internal fixation devices, such as rods, hooks, screws, wires, etc., which come into contact with other metal objects, must be made from like or compatible metals. Because different manufacturers employ different materials, varying tolerances and manufacturing specifications, and differing design parameters, components of the system should not be used in conjunction with components from any other manufacturer's spinal system. Any such use will negate the responsibility of STRYKER Spine for the performance of the resulting mixed component implant.

POSTOPERATIVE CARE

Prior to adequate maturation of the fusion mass, implanted spinal instrumentation may need additional help to accommodate full load bearing. External support may be recommended by the physician from two to four months postoperatively or until x-rays or other procedures confirm adequate maturation of the fusion mass; external immobilization by bracing or casting may be employed. Surgeons must instruct patients regarding appropriate and restricted activities during consolidation and maturation for the fusion mass in order to prevent placing excessive stress on the implants which may lead to fixation or implant failure and accompanying clinical problems. Surgeons must instruct patients to report any unusual changes of the operative site to his/her physician. The physician should closely monitor the patient if a change at the site has been detected.

ADVERSE EFFECTS

- While the expected life of spinal implant components is difficult to estimate, it is finite. These components are made of foreign materials which are placed within the body for the potential fusion of the spine and reduction of pain. However, due to the many biological, mechanical and physicochemical factors which affect these devices but cannot be evaluated in vivo, the components cannot be expected to indefinitely withstand the activity level and loads of normal healthy bone.
- Bending, disassembly or fracture of any or all implant components.
- Fatigue fracture of spinal fixation devices, including screws and rods, has occurred.
- Pain, discomfort, or abnormal sensations due to the presence of the device.
- Pressure on skin from components where inadequate tissue coverage exists over the implant, with the potential extrusion through the skin.
- Dural leak requiring surgical repair.
- Cessation of growth of the fused portion of the spine.
- Loss of proper spinal curvature, correction, height and/or reduction.
- Delayed Union or Nonunion: Internal fixation appliances are load sharing devices which are used to obtain alignment until normal healing occurs. In the event that healing is delayed, does not occur, or failure to immobilize the delayed/nonunion results, the implant will be subject to excessive and repeated stresses which can eventually cause loosening, bending or fatigue fracture. The degree or success of union, loads produced by weight bearing, and activity levels will, among other conditions, dictate the longevity of the implant. If a nonunion develops or if the implants loosen, bend or break, the device(s) should be revised or removed immediately before serious injury occurs.
- Loosening of spinal fixation implants can occur. Early mechanical loosening may result from inadequate initial fixation, latent infection, premature loading of the prosthesis or trauma. Late loosening may result from trauma, infection, biological complications or mechanical problems, with the subsequent possibility of bone erosion, migration and/or pain.
- Peripheral neuropathies, nerve damage, heterotopic bone formation and neurovascular compromise, including paralysis, loss of bowel or bladder function, or foot-drop may occur.
- Serious complications may be associated with any spinal surgery. These complications include, but are not limited to: genitourinary disorders; gastrointestinal disorders; vascular disorders,

including thrombus; bronchopulmonary disorders, including emboli; bursitis, hemorrhage, myocardial infarction, infection, paralysis or death.

- Neurological, vascular, or soft tissue damage due directly to the unstable nature of the fracture, or to surgical trauma.
- Inappropriate or improper surgical placement of this device may cause distraction or stress shielding of the graft or fusion mass. This may contribute to failure of an adequate fusion mass to form.
- Decrease in bone density due to stress shielding.
- Intraoperative fissure, fracture, or perforation of the spine can occur due to implantation of the components. Postoperative fracture of bone graft, the intervertebral body, pedicle, and/or sacrum above and/or below the level of surgery can occur due to trauma, the presence of defects, or poor bone stock.

Adverse effects may necessitate reoperation or revision.

The surgeon must warn the patient of these adverse effects as deemed necessary.

REMOVAL OF IMPLANTS

These implants are temporary internal fixation devices designed to stabilize the operative site during the normal healing process. After healing occurs, these devices serve no functional purpose and can be removed. Removal may also be recommended in other cases, such as:

- Corrosion with a painful reaction
- Migration of the implant, with subsequent pain and/or neurological, articular or soft tissue lesions
- Pain or abnormal sensations due to the presence of the implants
- Infection or inflammatory reactions
- Reduction in bone density due to the different distribution of mechanical and physiological stresses and strains
- Failure or mobilization of the implant

Standard ancillaries provided by STRYKER Spine can be used to remove the implants. Any decision by a physician to remove the internal fixation device must take into consideration such factors as the risk to the patient of the additional surgical procedure as well as the difficulty of removal. Removal of an unloosened spinal screw may require the use of special instruments to disrupt the interface at the implant surface. This technique may require practice in the laboratory before being attempted clinically. Implant removal should be followed by adequate postoperative management to avoid fracture or re-fracture. Removal of the implant after fracture healing is recommended. Metallic implants can loosen, bend, fracture, corrode, migrate, cause pain or stress shield bone.

PACKAGING AND STORAGE

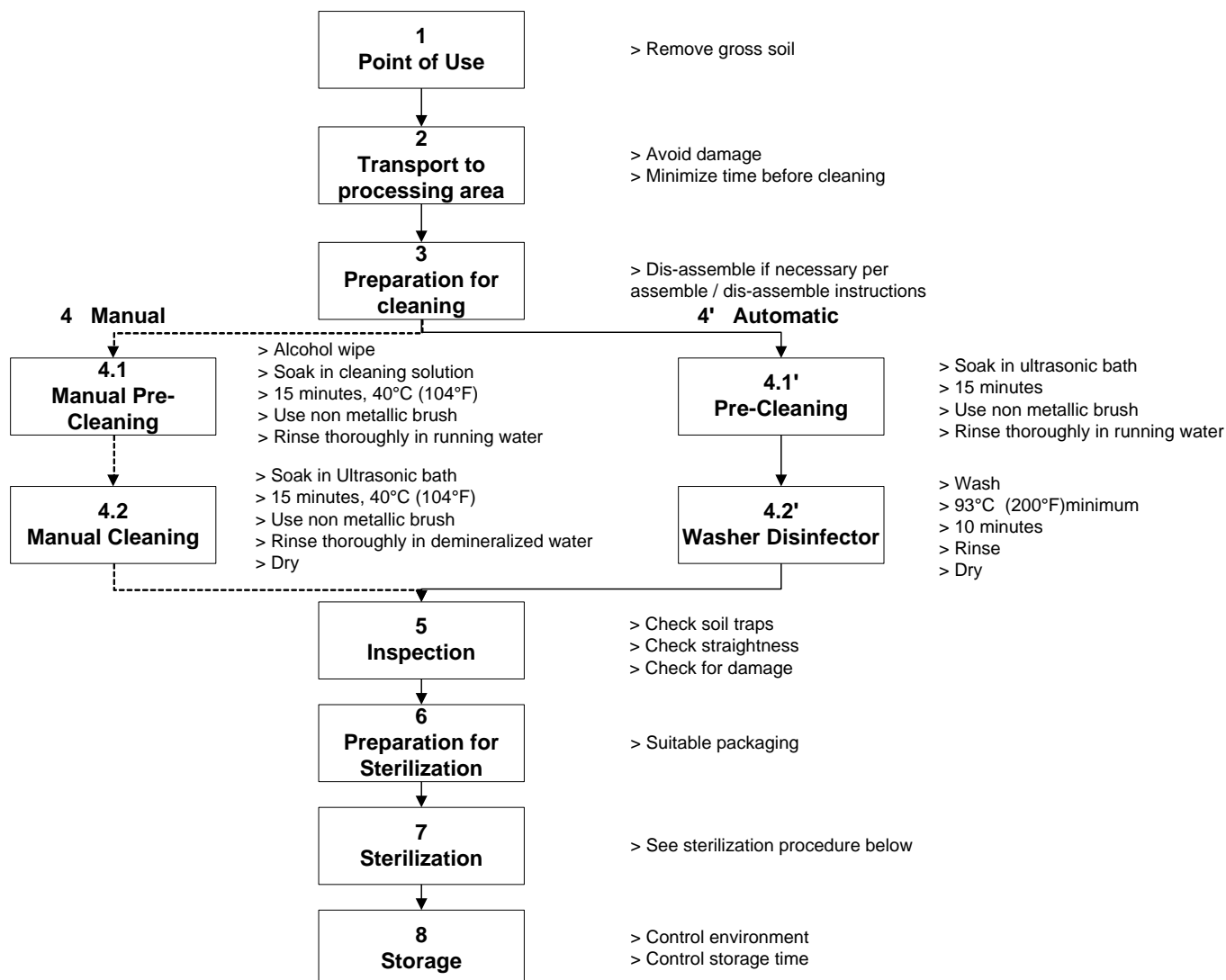
- The implants are delivered in packages; these must be intact at the time of receipt.
- The systems are sometimes supplied as a complete set: implants and instruments are arranged on trays and placed in specially designed storage boxes.
- They must be stored in a clean, dry and temperate place.

FURTHER INFORMATION

A surgical technique brochure is available on request through your STRYKER agent or directly from STRYKER Spine. Users with brochures that are over two years old at the time of surgery are advised to ask for an updated version.

PRE-CLEANING / CLEANING AND STERILIZATION PROCEDURE RECOMMENDED FOR NON STERILE MEDICAL DEVICES

For safety reasons, non-sterile devices must be pre-cleaned, cleaned and sterilized prior to use. Moreover, for good maintenance, reusable instruments must be pre-cleaned, cleaned and sterilized immediately after surgery following the sequence of steps described in the following chart.



WARNING: Special decontamination procedure for NCTA (Creutzfeldt-Jakob disease) following French Guideline DGS/DHOS n°138:

If, for any reason, a device is suspected to have been contaminated with NCTA (Creutzfeldt-Jakob disease), the following procedure must be followed depending on the device material:

1- If the device is made of titanium or titanium alloy, immerse it totally in a 2% sodium hypochlorite solution for 1 hour.

If the device is made of stainless steel, immerse it totally in a 1M NaOH solution for 1 hour.

2- The device must be autoclaved at 137°C (278°F) for 18 minutes.

After this process, devices are considered decontaminated against NCTA and sterile (a Sterility Assurance Level (SAL) of 10^{-6} is obtained).

Devices made of titanium or titanium alloy are identified by a **T** laser marking.

Devices made of stainless steel are identified by an **S** laser marking.

Devices made of Cobalt-Chromium-Molybdenum are identified by a **C** laser marking.

Plastic materials used by STRYKER Spine withstand both treatments described above.

If the device material is not identified, please contact your local STRYKER Spine representative. A list of instruments potentially used - or intended to be used - in high contamination risk procedures can be obtained by contacting a STRYKER Spine representative.

Sterilization procedure recommended for non-sterile medical devices including implants

Medical Devices should be sterilized in their container with water vapor in an autoclave in accordance with standard hospital procedure. The sterilization method suggested has been validated according to the AAMI TIR 12 and AAMI ST-79 in order to obtain a Sterility Assurance Level (SAL) of 10⁻⁶.

STERILIZATION CONDITIONS FOR XIA 3 SPINAL SYSTEM (NOT INCLUDING XIA 3 SYSTEM - SERRATO): 2 sets of low parameters have been validated on wrapped items:

- Prevacuum steam sterilization (Porous load autoclave): TEMPERATURE: 132°C (270°F), EXPOSURE TIME: 4 minutes, DRY TIME: 45min.
- Gravity-displacement steam sterilization: TEMPERATURE: 132°C (270°F), EXPOSURE TIME: 10 minutes, PRESSURE: 2.5 Bars/36-PSIG, DRY TIME: 45min.

STERILIZATION CONDITIONS FOR XIA 3 SYSTEM SERRATO: 2 SETS OF LOW PARAMETERS HAVE BEEN VALIDATED ON WRAPPED ITEMS:

- Prevacuum steam sterilization (Porous load autoclave): TEMPERATURE: 132°C (270°F), EXPOSURE TIME: 4 minutes, DRY TIME: 30 min.
- Gravity-displacement steam sterilization: TEMPERATURE: 132°C (270°F), EXPOSURE TIME: 15 minutes, PRESSURE: 2.5 Bars/36-PSIG, DRY TIME: 30 min.

STRYKER Spine recommends using higher parameters for either Prevacuum steam sterilization or Gravity-displacement steam sterilization: TEMPERATURE: 137°C (278°F), EXPOSURE TIME: 18 minutes, PRESSURE: 2.5 Bars/36-PSIG, DRY TIME: 45min. All intermediary sets of parameters can be used.

The autoclave must be validated by the hospital and regularly checked to guarantee the recommended sterilization temperature is reached for the entire exposure time.

If sterilization containers with paper filters are used, it is advisable to use a new filter for each sterilization.

If after having followed this sterilization method there is still water in the sterilization containers or on/inside the device, the device must be dried and sterilization repeated.

CAUTION

Stryker Spine has not validated and does not recommend Flash Sterilization. For Product being used in the US, a sterilization wrap that is FDA cleared for the cycle parameters noted is required.

PRE-OPERATIVE PRECAUTIONS

Anyone using STRYKER Spine products can obtain a Surgical Technique brochure by requesting one from a distributor or from STRYKER Spine directly. Those using brochures published more than two years before the surgical intervention are advised to get an updated version.

STRYKER Spine devices can only be used by doctors who are fully familiar with the surgical technique required and who have been trained to this end. The doctor operating must take care not to use the instruments to exert inappropriate stress on the spine or the implants and must scrupulously comply with any operating procedure described in the surgical technique provided by STRYKER Spine. For example, the forces exerted when repositioning an instrument in-situ must not be excessive as this is likely to cause injury to the patient.

To reduce the risks of breakage, care must be taken not to distort the implants or nick, hit or score them with the instruments unless otherwise specified by the applicable STRYKER Spine Surgical Technique.

Extreme care must be taken when the instruments are used near vital organs, nerves or vessels.

Unless otherwise specified on the label, the instruments can be reused after decontamination, cleaning and sterilization.

CAUTION

Federal law (U.S.A) restricts this device to sale by or on the order of a licensed physician.

WARNING (U.S.A.)

The safety and effectiveness of pedicle screw spinal systems have been established only for spinal conditions with significant mechanical instability or deformity requiring fusion with instrumentation. These conditions are significant mechanical instability or deformity of the thoracic, lumbar, and sacral spine secondary to spondylolisthesis (grades 3 and 4) of the L5-S1 vertebrae, degenerative spondylolisthesis with objective evidence of neurological impairment, fracture, dislocation, scoliosis, kyphosis, spinal tumor, and failed previous fusion (pseudoarthrosis). The safety and effectiveness of these devices for any other conditions are unknown.

PRECAUTIONS (U.S.A.)

The implantation of pedicle screw spinal systems should be performed only by experienced spinal surgeons with specific training in the use of this pedicle screw spinal system because this is a technically demanding procedure presenting a risk of serious injury to the patient.

Based on the fatigue testing results, the physician/surgeon should consider the levels of implantation, patient weight, patient activity level, other patient conditions, etc. which may impact on the performance of the system.

SYMBOLS



COMPLAINTS

Any health professional having a complaint or grounds for dissatisfaction relating to the identity, quality, durability, reliability, safety, effectiveness or performance of a device should notify STRYKER Spine or its representative. Moreover, if a device has malfunctioned, or is suspected of having malfunctioned, STRYKER Spine or its representative must be advised immediately.

If a STRYKER Spine product has ever worked improperly and could have caused or contributed to the death of or serious injury to a patient, the distributor or STRYKER Spine must be informed as soon as possible by telephone, fax or in writing.

For all complaints, please give the name and reference along with the batch number of the component(s), your name and address and a complete description of the event to help STRYKER Spine understand the causes of the complaint.

For further information or complaints, please contact:

STRYKER SPINE
2 Pearl Court, Allendale, NJ 07401- 1677 USA
Tel: +1-201-760-8000